

Need a Mortgage in principle to make offers? Call us now for quick assistance!
0121 775 0101



Do you need to sell? Start your journey now! Call us we can help.
0121 775 0101



SCAN FOR MORE INFO
SIZE - 996 Sq Ft
TENURE - Freehold
COUNCIL TAX - Solihull Metropolitan Borough Council - E
BROADBAND - Upload Max 5500Mbps Download Max 5500Mbps
MOBILE SERVICES - EE - 85%, 3 - 85%, 02 - 81%, Vodafone - 80%
EPC - D - 68
PARKING - For at least 2 Cars
FLOODRISK - Very Low
SERVICES - Mains
COVENANTS - N/A

16 Glaston Drive
Hillfield, Solihull, B91 3YE
Offers in the Region of £475,000

Located in the desirable area of Hillfield, Solihull, this well-presented bedroom detached house is an ideal family home, particularly for those seeking to benefit from the respected Tudor Grange catchment. This charming home combines comfort, style, and convenience, making it a wonderful opportunity for those looking to settle in a vibrant community.

FEATURES

- Well Presented Detached House
- Bright Lounge with Bay Window to front
- Dining Area with French Doors to Garden
- Modern Fitted Kitchen
- Ground Floor W.C.
- Principal Bedroom with En-Suite Shower Room
- Two Further Bedrooms
- Family Bathroom
- Private Rear Garden
- Single Garage & Driveway Parking
- Tudor Grange Catchment

Are you an investor interested in expanding your portfolio?

Call 0121 775 0101 to provide your investment criteria for alerts.



SCAN TO VIEW OUR WEEKLY FILMS & SUBSCRIBE

Sneak Peeks

Every week, we unveil "Sneak Peeks," a feature showcasing exclusive properties before they hit Rightmove and other platforms.

The Landlord Club

Join our Landlord Club for weekly updates on legislation, market trends, and our Letting Director's 'Investment Pick of the Week' for optimal ROI.

HTSPMD

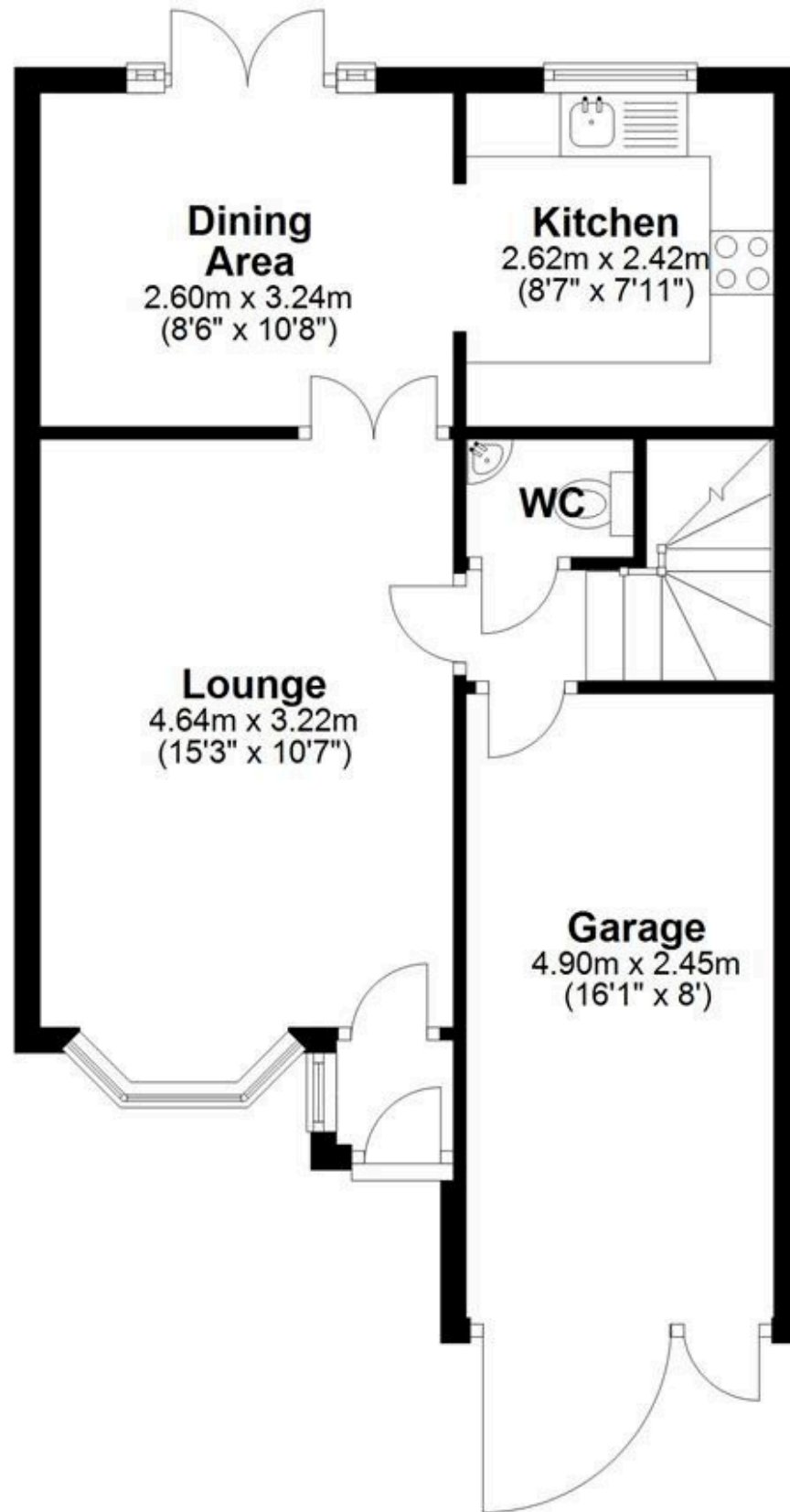
Tune into 'How's The Solihull Property Market Dom' weekly for a quick, insightful snapshot of the market.

The Mortgage Update

Get weekly insights and the best deals with our Mortgage Update, your shortcut to navigating the complex mortgage landscape confidently.

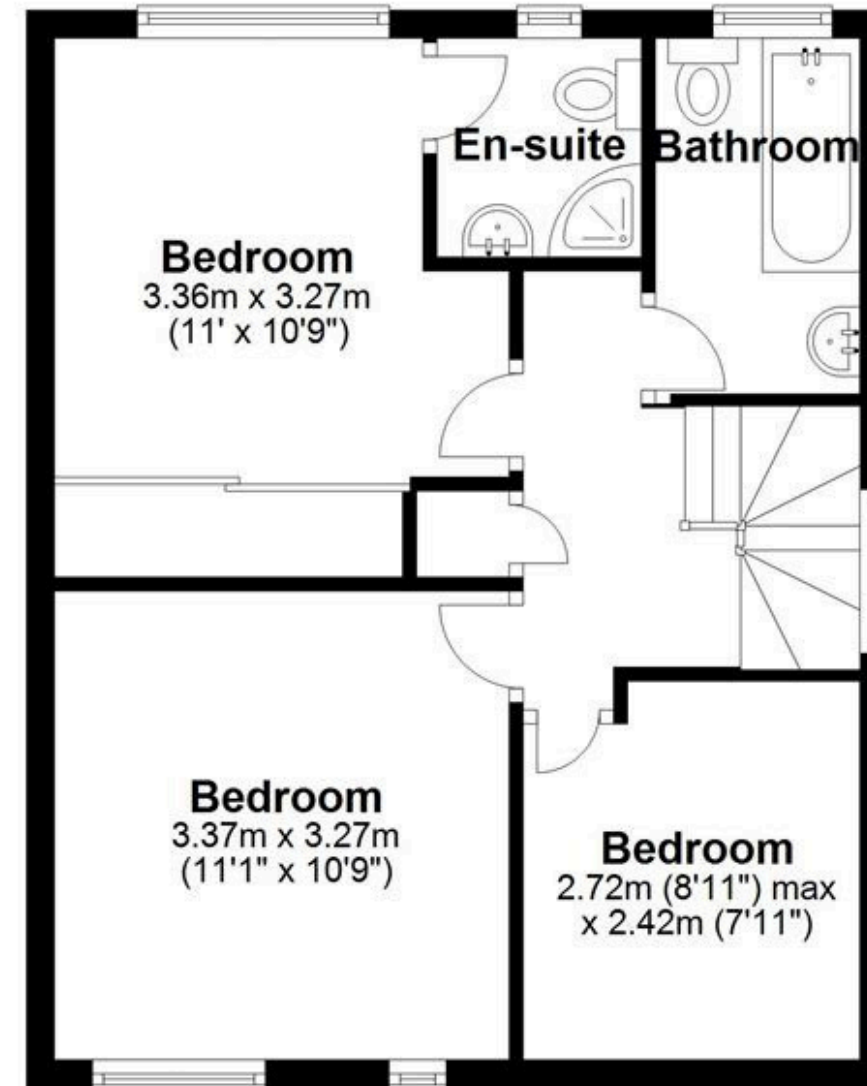
Ground Floor

Approx. 48.9 sq. metres (526.8 sq. feet)



First Floor

Approx. 43.6 sq. metres (469.2 sq. feet)



Total area: approx. 92.5 sq. metres (996.1 sq. feet)

This floor plan is for illustration purposes only, this is not intended to be a measured/scaled survey or comply with RICS guidelines. All measurements (including total floor area) openings, orientation and floor area are approximate. No details are guaranteed, they cannot be relied upon for any purpose and do not form part of any agreement. A party must rely upon its own inspection(s). No responsibility is taken for any error, omission, or mis-statement.

Plan produced using PlanUp.