

**LONDON
VICTORIA
GROUPS**



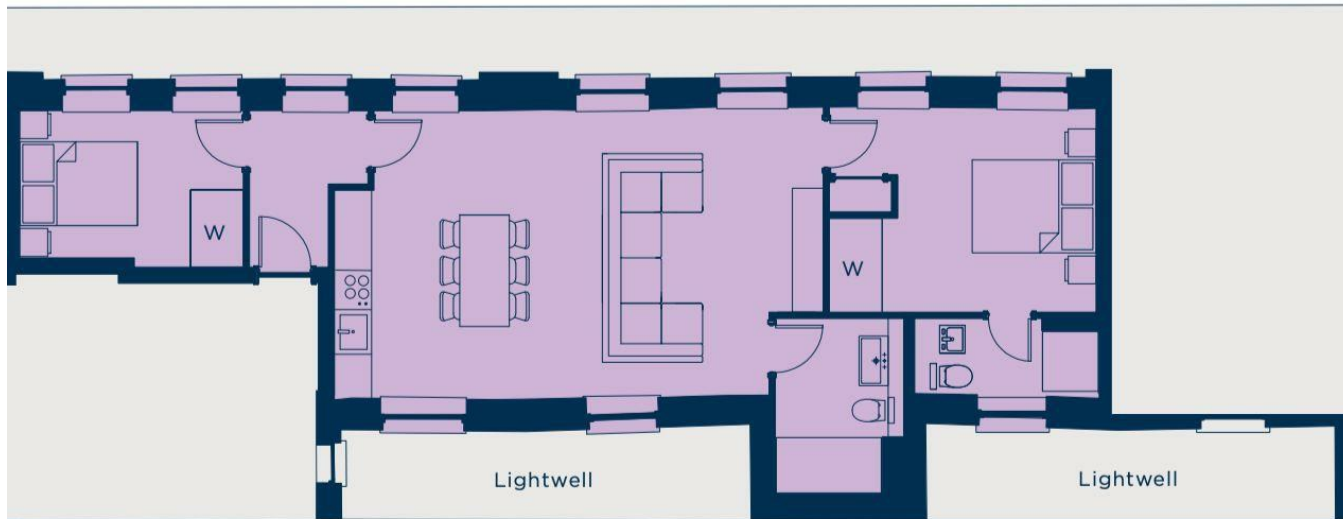
Pink Mews, 1-6 Dyer's Buildings

, London EC1N 2JT

- 2 Bed 2 Bath
- Duplex layout across two floors
- Fully integrated modern kitchen
- Concierge service
- EPC-B
- Gated mews development with private entrance
- Spacious open-plan living and dining area
- En-suite to principal bedroom
- Walking distance to Chancery Lane and Farringdon stations
- CTB-F

£1,250,000 Leasehold

Local Authority **City Of London**
Council Tax Band **F**
EPC Rating **B**



London Office Office
Spaces Victoria, 25 Wilton Road, Pimlico,
London, SW1V 1LW

Contact
020 3084 3094
XL@londonvictoriagroups.co.uk
www.londonvictoriagroups.co.uk

Agents Note: Whilst every care has been taken to prepare these particulars, they are for guidance purposes only. All measurements are approximate and for general guidance purposes only and whilst every care has been taken to ensure accuracy, they should not be relied upon and potential buyers/tenants are advised to recheck the measurements.