



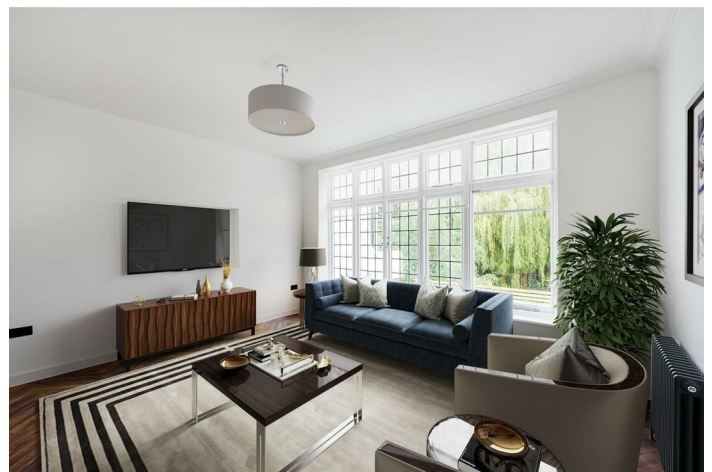
Teignmouth Road, NW2

TO LET - £4,600 Per Month

AVAILABLE TO LET NOW- Is this beautifully presented four bedroom contemporary duplex apartment situated within this imposing detached villa, in the highly sought-after Mapesbury Conservation Area.

Arranged over four floors the accommodation comprises of a bright south-facing kitchen/reception room with fitted appliances and doors leading onto a private rear garden. The reception room is situated on the Ground Floor with a beautiful diagonal herringbone parquet wooden flooring, along with a double bedroom with an en-suite bathroom. On the First Floor, there is a large double bedroom with fitted wardrobes and an en-suite bathroom, a second double bedroom with fitted wardrobes, and a contemporary family bathroom with a freestanding bath. The third bedroom is located on the Second Floor and benefits from eaves storage.

Teignmouth Road is a popular tree-lined road within easy walking distance of local amenities and transport links via Willesden Green & Kilburn (Jubilee - Zone 2) Stations, Brondesbury (Overground) Station, and local buses with easy access into Central London.



020 8450 9377

rentals@cameronsstiff.co.uk

cameronsstiff.co.uk

Teignmouth Road, London, NW2

Approximate Area = 1636 sq ft / 152 sq m

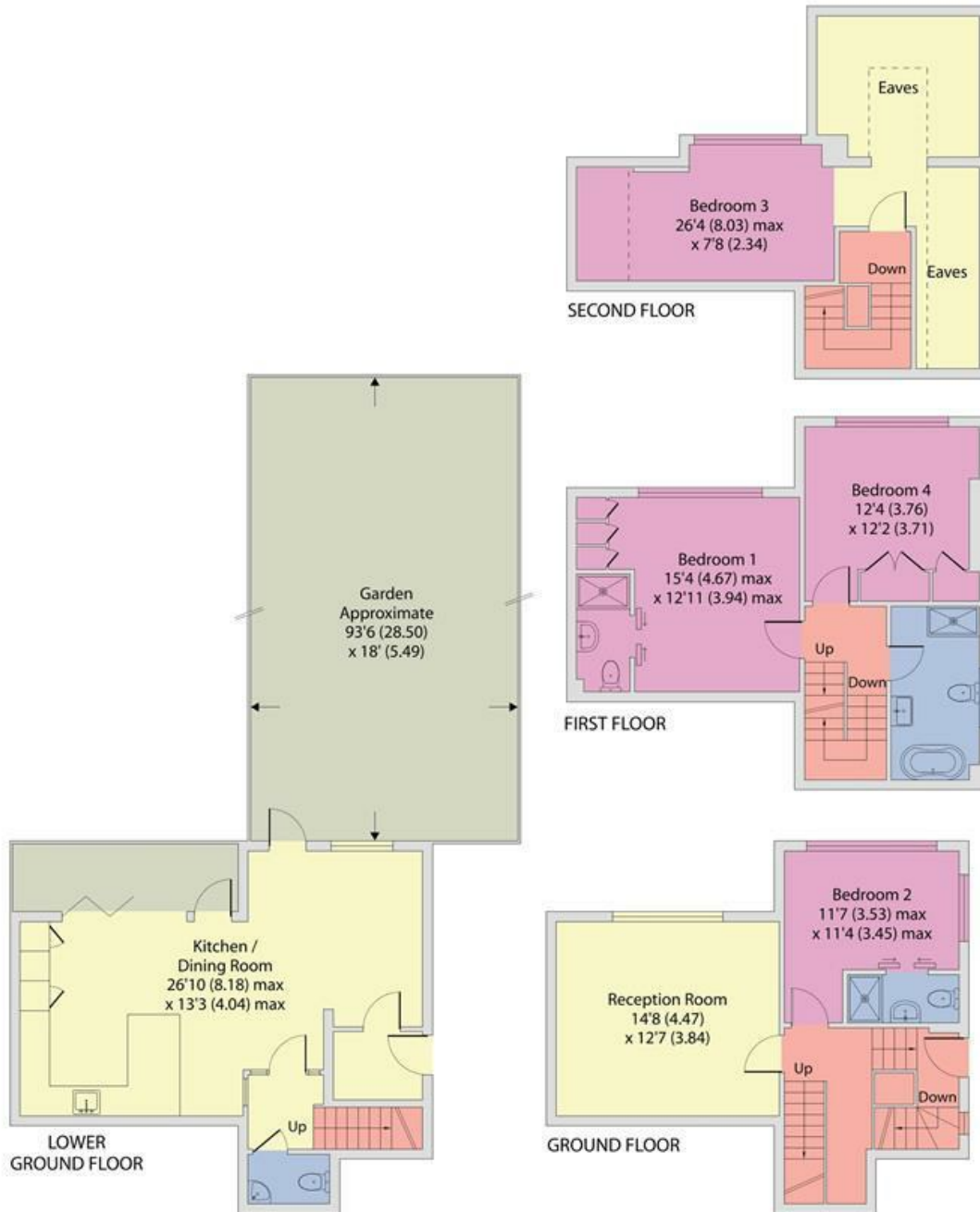
Limited Use Area(s) = 159 sq ft / 14.8 sq m

Total = 1795 sq ft / 166.8 sq m

For identification only - Not to scale



Denotes restricted head height



Floor plan produced in accordance with RICS Property Measurement 2nd Edition, Incorporating International Property Measurement Standards (IPMS2 Residential). © nichecom 2026. Produced for Camerons Stiff & Co. REF: 774146

EPC: C

Ref: 18259492

