



**Marri Street, Watford, WD24 5FY**



**welcome to**

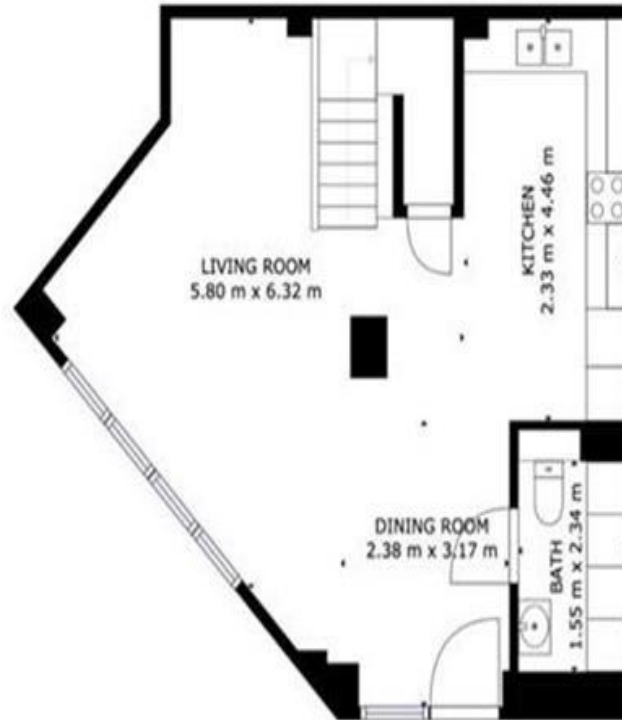
**Marri Street, Watford**

A luxury two-bedroom duplex maisonette on Marri Street, offering a very spacious 1,200 sq ft of living space. Featuring open-plan living, a modern fitted kitchen, and two en-suite bedrooms with fitted wardrobes. The property also benefits from secure parking and excellent commuter links.





GROSS INTERNAL AREA  
 FLOOR 1: 10 m<sup>2</sup>, FLOOR 2: 10 m<sup>2</sup>  
 TOTAL: 20 m<sup>2</sup>  
 (200 m<sup>2</sup> CORRESPONDING TO APPROXIMATE ACTUAL SIZE)



GROSS INTERNAL AREA  
 FLOOR 1: 10 m<sup>2</sup>, FLOOR 2: 10 m<sup>2</sup>  
 TOTAL: 20 m<sup>2</sup>  
 (200 m<sup>2</sup> CORRESPONDING TO APPROXIMATE ACTUAL SIZE)

## Entrance

### Wc

8' 10" x 4' 11" into cupboard ( 2.69m x 1.50m into cupboard )

### Lounge/Kitchen

27' 2" to max x 22' 11" to max ( 8.28m to max x 6.99m to max )

### Bedroom 1

16' 4" to max x 12' 6" to max ( 4.98m to max x 3.81m to max )

### En Suite

7' 9" x 6' 7" ( 2.36m x 2.01m )

### Bedroom 2

23' 4" into wardrobe x 15' 10" ( 7.11m into wardrobe x 4.83m )

### En Suite

7' 9" x 6' 8" ( 2.36m x 2.03m )

### Total Floor Area

105 m<sup>2</sup> (1136 sq ft)

welcome to

## Marri Street, Watford

- Luxury Ground Floor Duplex Maisonette
- Two Double Bedrooms with En-Suites
- 993-Year Lease Remaining
- Secure Allocated Parking
- Just 0.3 Miles from Watford Junction

Tenure: Leasehold EPC Rating: B

Council Tax Band: E Service Charge: 1600.00

Ground Rent: Ask Agent

This is a Leasehold property. We are awaiting further details about the Term of the lease. For further information please contact the branch. Please note additional fees could be incurred for items such as Leasehold packs.

Guide Price

**£500,000 - £525,000**



Please note the marker reflects the postcode not the actual property

check out more properties at [brownandmerry.co.uk](https://www.brownandmerry.co.uk)



Property Ref:  
WAF104742 - 0008

1. MONEY LAUNDERING REGULATIONS Intending purchasers will be asked to produce identification documentation at a later stage and we would ask for your co-operation in order that there is no delay in agreeing the sale. 2. These particulars do not constitute part or all of an offer or contract. 3. The measurements indicated are supplied for guidance only and as such must be considered incorrect. Potential buyers are advised to recheck measurements before committing to any expense. 4. We have not tested any apparatus, equipment, fixtures or services and it is in the buyers interest to check the working condition of any appliances. 5. Where an EPC, or a Home Report (Scotland only) is held for this property, it is available for inspection at the branch by appointment. If you require a printed version of a Home Report, you will need to pay a reasonable production charge reflecting printing and other costs. 6. We are not able to offer an opinion either written or verbal on the content of these reports and this must be obtained from your legal representative. 7. Whilst we take care in preparing these reports, a buyer should ensure that his/her legal representative confirms as soon as possible all matters relating to title including the extent and boundaries of the property and other important matters before exchange of contracts.

Brown & Merry is a trading name of Sequence (UK) Limited which is registered in England and Wales under company number 4268443, Registered Office is Cumbria House, 16-20 Hockliffe Street, Leighton Buzzard, Bedfordshire, LU7 1GN. VAT Registration Number is 500 2481 05.



**01923 248861**



[watford@brownandmerry.co.uk](mailto:watford@brownandmerry.co.uk)



104 The Parade, WATFORD, Hertfordshire,  
WD17 1AW



**[brownandmerry.co.uk](https://www.brownandmerry.co.uk)**