

Kingston Road, TW11

£249,950

A fantastic opportunity to purchase this apartment at a reduced price as it requires a lease extension. There are 38 years remaining. Please contact the office where we can discuss this in more detail.

Regency Court is set back from Kingston Road, an excellent position for transport links by bus along with Teddington and Hampton Wick stations and access to Teddington High Street, the River Thames and excellent school catchment.

Apartments in Regency Court are very popular, they do not come on to the market very often. The apartment will be undergoing a new roof and guttering, the cost of which has already been paid for by the current owners.

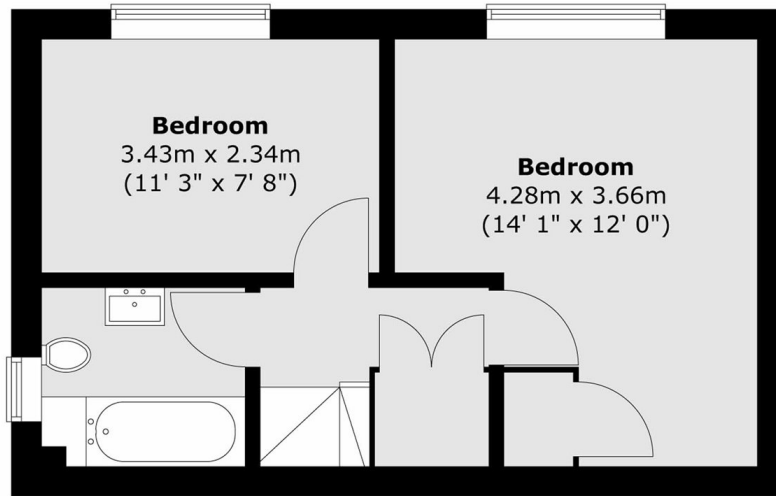
The accommodation is split level over the ground and first floor. The ground floor offers a 23ft open plan reception room which opens onto the kitchen. The living area is bright and spacious with plenty of room to relax and dine creating a lovely sociable family room. To the first floor there are two generous double bedrooms. The principal bedroom has fitted storage. There is additional storage in the hallway and a family bathroom. Within the development there is parking and a private garage for flat 2, along with communal gardens.

Regency Court is set back from Kingston Road, an excellent position for transport links by bus along with Teddington and Hampton Wick stations and access to Teddington High Street, the River Thames and excellent school catchment.

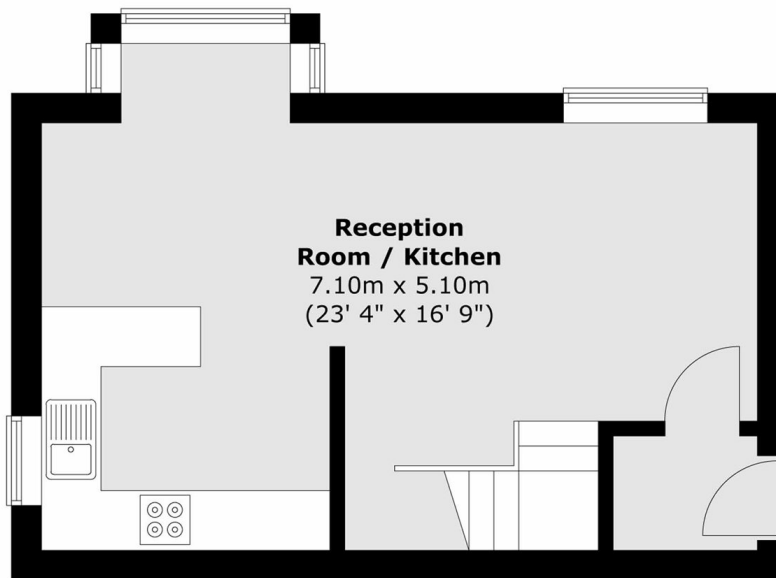
Features

- Two Bedrooms
- Private Garage
- Parking
- Communal Garden
- Large Living Space
- No Onward Chain

Kingston Road, Teddington, TW11



First Floor



Ground Floor

Total area (approx.) : 63.4 sq. m (682 sq. ft)