



HIVE



THE LAUREL
PLOT 172 KNIGHTWOOD CHASE
FORDINGBRIDGE
SP6 1JW

H

“
Agent's introduction

This striking detached home at Knightwood Chase is a real showstopper, boasting a vaulted ceiling kitchen/diner with doors to the garden, spacious lounge, utility, and four generous bedrooms. With excellent parking, garage, and Cala's renowned finish, it's an ideal forever family home in a prime New Forest setting.



HIVE



HIVE



HIVE

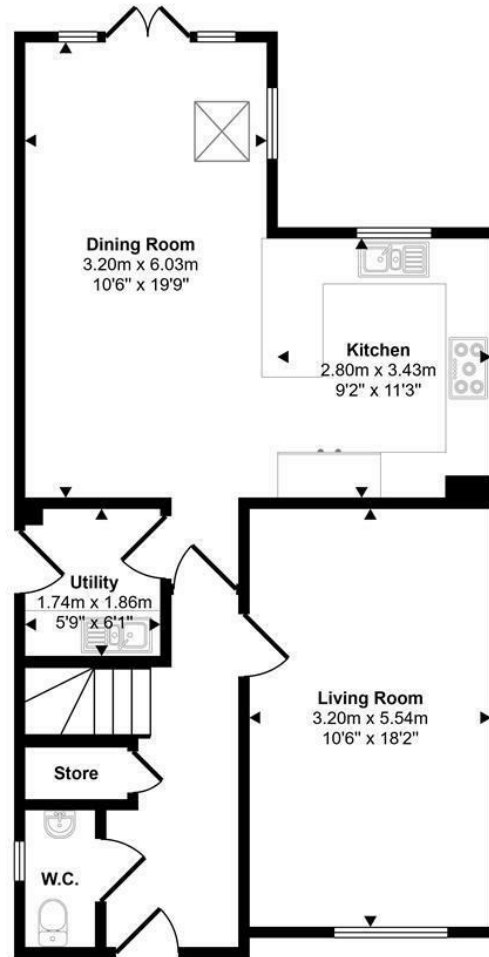
Property highlights

- 360 Property Tour Available
- Impressive L-shaped kitchen/diner with vaulted ceiling
- Energy-efficient new build with 10-year NHBC warranty
- Walking distance to Fordingbridge, 5 minute drive to The New Forest
- Great School Catchment
- Separate utility room with sink and laundry space
- Situated at Knightwood Chase, located on the outskirts of The New Forest
- Cala Homes' award-winning design and energy efficiency
- Stunning Finish Throughout
- Easy Access To M27

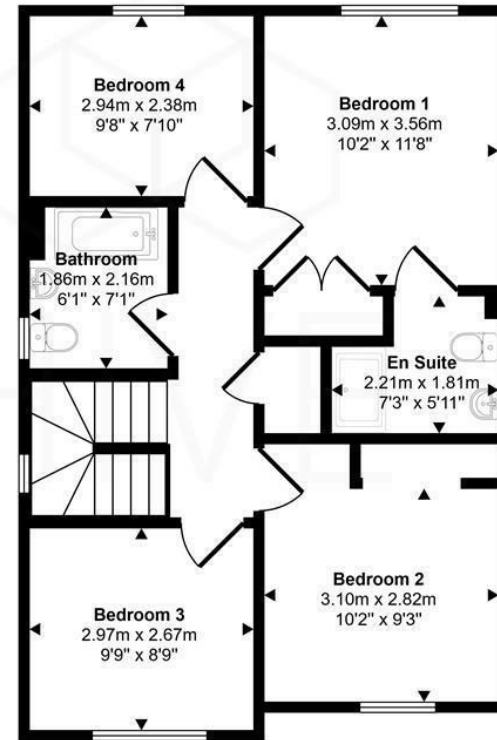


Floor plan and EPC

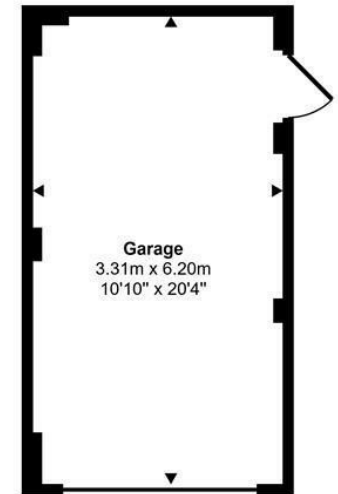
Approx Gross Internal Area
143 sq m / 1540 sq ft



Ground Floor
Approx 65 sq m / 700 sq ft



First Floor
Approx 58 sq m / 619 sq ft



Garage
Approx 21 sq m / 221 sq ft

Energy Efficiency Rating

	Current	Potential
<i>Very energy efficient - lower running costs</i>		
(92 plus) A		
(81-91) B		
(69-80) C		
(55-68) D		
(39-54) E		
(21-38) F		
(1-20) G		
<i>Not energy efficient - higher running costs</i>		
England & Wales	EU Directive 2002/91/EC	

This floorplan is only for illustrative purposes and is not to scale. Measurements of rooms, doors, windows, and any items are approximate and no responsibility is taken for any error, omission or mis-statement. Icons of items such as bathroom suites are representations only and may not look like the real items. Made with Made Snappy 360.





HIVE & Partners Unit F1, Arena Business Centre 9 Nimrod Way, Ferndown, BH21 7UH
01202 122 002 | www.hiveandpartners.co.uk | sales@hiveandpartners.co.uk