

Frank Harris & Co.



Belvedere Road, SE1

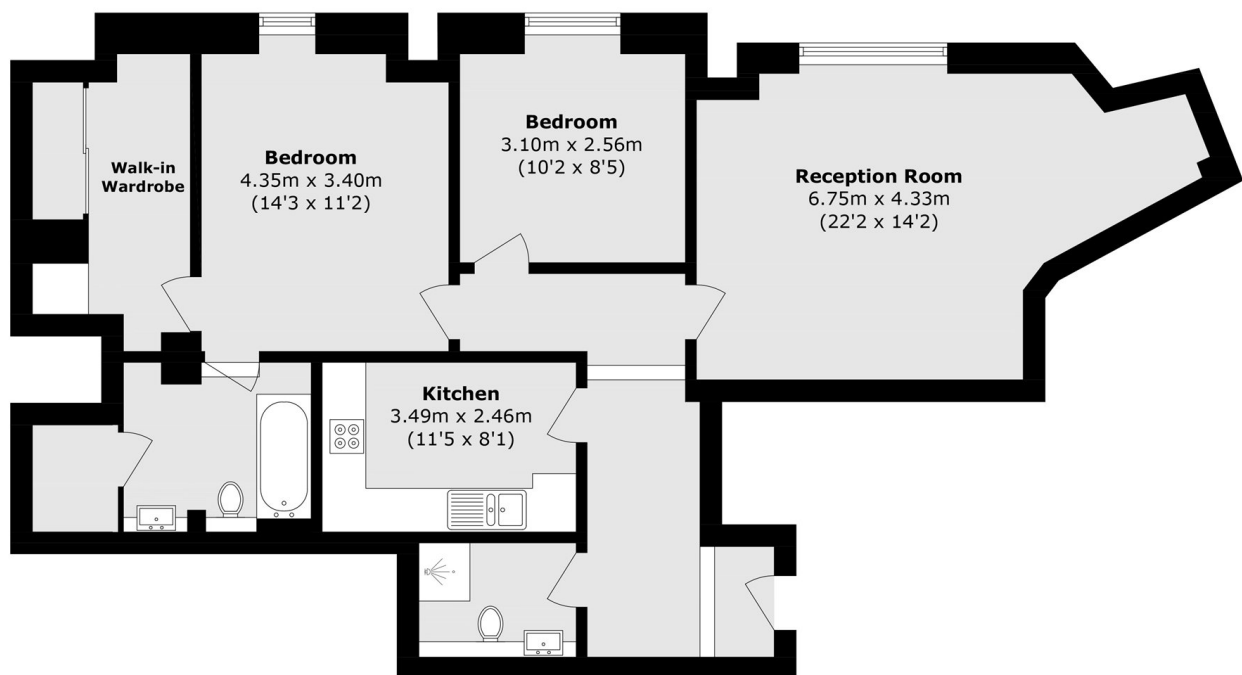
£750 pcm

Two bedroom, two bathroom apartment in the sought after County Hall Development with access to an on-site gym, swimming pool and 24 hour concierge.

Close to Waterloo Station, Southwark tube and the many eclectic shops, bars, restaurants and theatres along The Cut together with many leisure facilities that the South Bank offers including, the Tate Modern, Royal Festival Hall and Borough Market towards London Bridge.

- Two Bedrooms • Two Bathrooms • Walk-In Wardrobe •
- Separate Living Space • 24hr Concierge • On-Site Gym •
- On-Site Swimming Pool •

Frank Harris & Co.



Total area (approx.): 90.7 sq. m (976.3 sq. ft)

Frank Harris & Co. South Bank and Waterloo
123 Stamford Street, London,
SE1 9NN
020 7590 7100
southbanklettings@frankharris.co.uk

Energy Rating: C. We aim to make our particulars both accurate and reliable. However they are not guaranteed; nor do they form part of an offer or contract. If you require clarification on any points then please contact us, especially if you're traveling some distance to view. Please note that appliances and heating systems have not been tested and therefore no warranties can be given as to their good working order.

