




**Taylor's**  
Est. 1992



**Fowke Street, Rothley, LE7 7PJ**  
Leicester

Offers Over  
**£260,000**

## Stylish Two Double Bedroom First Floor Apartment in the Heart of Rothley

Situated on sought-after Fowke Street in the heart of Rothley village, this beautifully presented first-floor apartment offers spacious accommodation, modern upgrades and a superb location within walking distance of the village centre.

Thoughtfully updated throughout, the property is ready for immediate occupation and would make an ideal first-time purchase, downsize or investment opportunity.

Accessed via well-maintained communal areas, the apartment enjoys an elevated position with plenty of natural light and a pleasant sense of privacy. The generous living accommodation centres around a spacious lounge and dining area, providing an ideal space for both everyday living and entertaining.

The recently refitted kitchen (2025) features a stylish range of contemporary units, integrated appliances and ample worktop space, creating a practical and attractive heart to the home.

There are two genuine double bedrooms, including a principal bedroom with en-suite shower room, while a separate family bathroom serves the second bedroom and guests. Further improvements include new flooring throughout, installed within the last few years, giving the apartment a fresh and contemporary feel.

Externally, residents benefit from attractive communal grounds and a peaceful setting, while remaining just a short stroll from Rothley's excellent range of amenities, including independent shops, cafés, pubs and scenic riverside walks.

Combining generous proportions, modern finishes and a highly desirable village location, this is a fantastic opportunity to acquire a move-in-ready apartment in one of Charnwood's most sought-after villages.

### Location

Rothley is widely regarded as one of Charnwood's premier villages, offering a fantastic blend of village charm and everyday convenience. The village boasts a thriving centre with a range of independent shops, cafés, pubs and local amenities, together with excellent schooling and transport links to Leicester, Loughborough and beyond. Surrounded by attractive countryside and riverside walks, Rothley continues to be one of the area's most desirable places to call home.





Beautifully presented first-floor apartment in a sought-after Rothley development. Recently updated with a stylish fitted kitchen and integrated appliances, new flooring throughout, two double bedrooms, en-suite to principal bedroom, family bathroom, and attractive communal grounds.

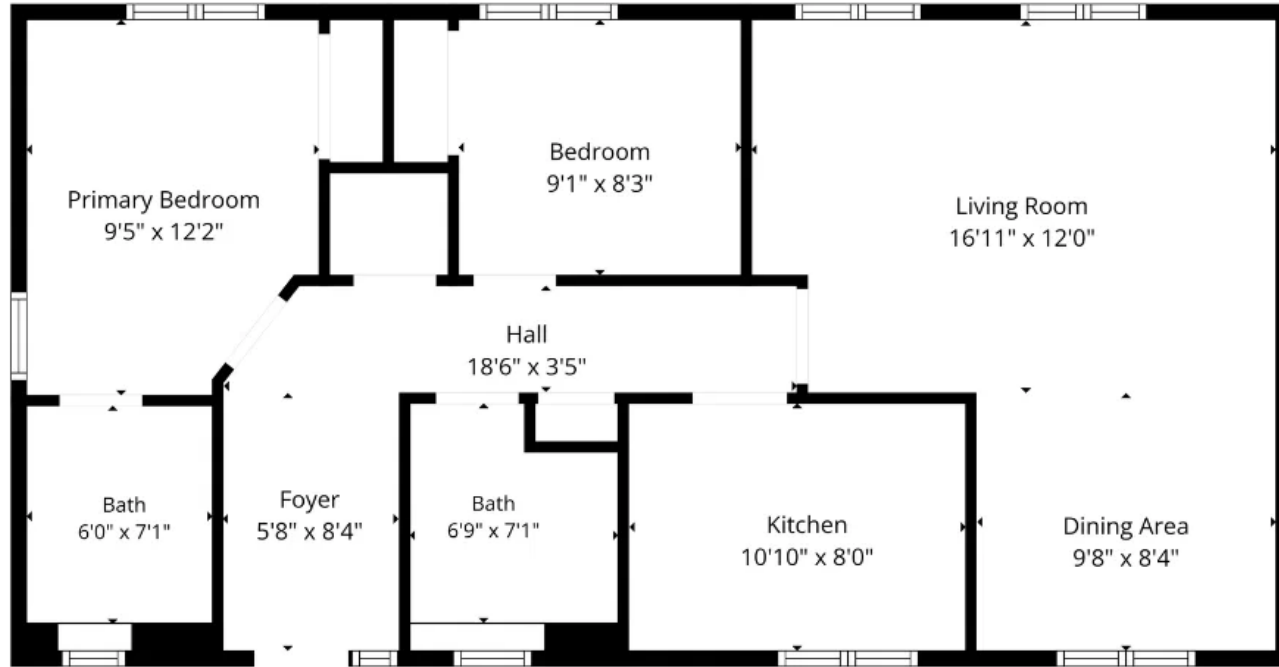
- First-floor apartment
- Sought-after Rothley location
- Two double bedrooms
- En-suite to principal bedroom
- Separate family bathroom
- Spacious living/dining room
- Newly fitted kitchen (2025)
- Integrated kitchen appliances
- Attractive communal grounds and allocated parking
- Well-maintained and move-in ready condition

**Council Tax Band: C**

**Tenure: Leasehold**

**Property Type: Apartment**





Total: 822 sq. ft  
Ground Floor: 822 sq. ft  
Excluded Areas: Walls: 62 sq. ft

Floor Plan Created By Cubicora App. Measurements Deemed Highly Reliable But Not Guaranteed.

Taylor's Estate Agency

4 Woodgate Rothley

0116 326 6464

hello@taylorsestate.agency

https://taylorsestate.agency/