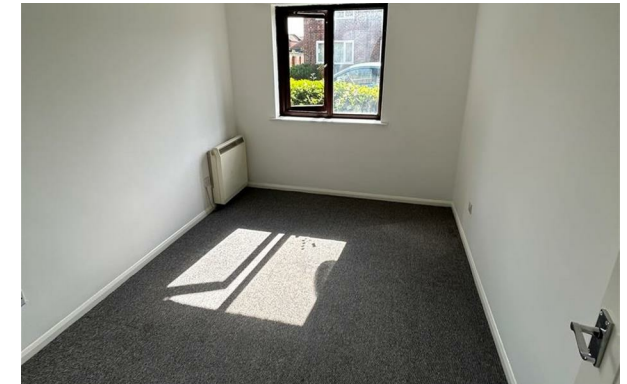


THE HOME AGENCY

'Passion for property.'



20, Almond Court Almond Road, Freemantle, Southampton,
£900 Per Month

- Purpose Build Flat
- Off Road Parking
- Unfurnished
- Viewing Recommended
- Electric Heating
- Small Patio Area
- Sought After Location
- Double Glazing
- Ground Floor
- No Pets

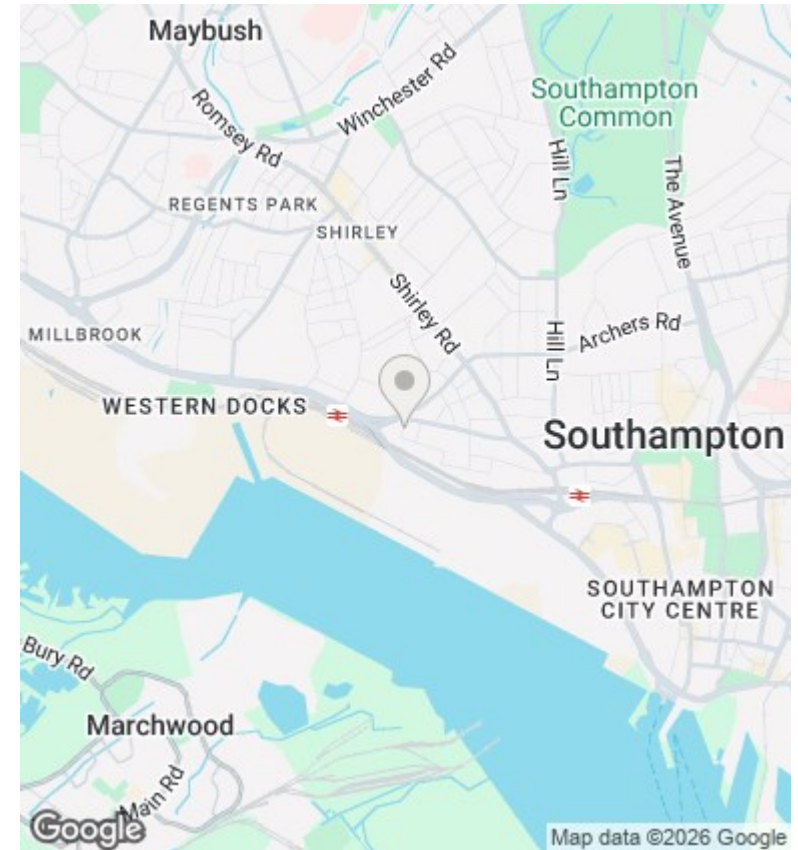
11 London Road, Southampton, Hampshire, SO15 2AE
02380 632632

enquiries@thehomeagency.net
<https://thehomeagency.net>

20 ALMOND COURT SO15 3SG



GROUND FLOOR FLAT
34.56 Msq



Directions

Viewings

Viewings by arrangement only. Call 02380 632632 to make an appointment.

Council Tax Band

C

EPC Rating:

D

Energy Efficiency Rating		Current	Potential
<i>Very energy efficient - lower running costs</i>			
(92 plus) A			
(81-91) B			
(69-80) C			77
(55-68) D	66		
(39-54) E			
(21-38) F			
(1-20) G			
<i>Not energy efficient - higher running costs</i>			
England & Wales		EU Directive 2002/91/EC	