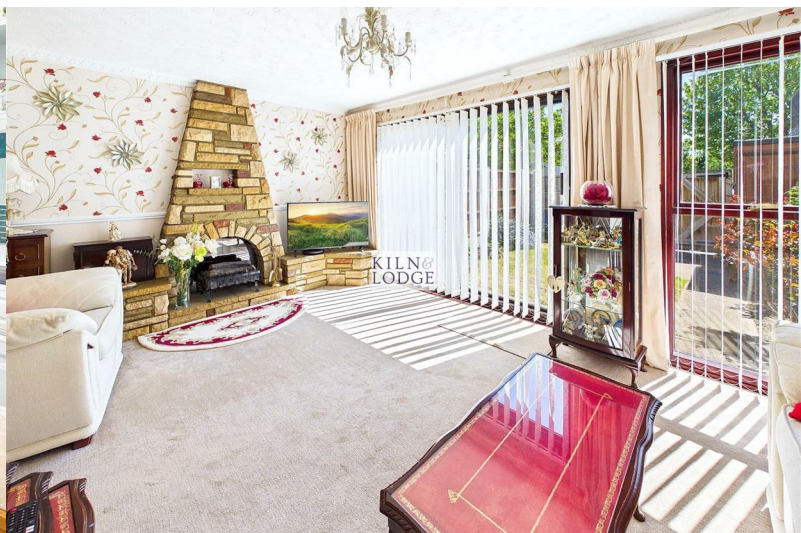




23 Larkspur Close

South Ockendon, RM15 6JQ

Offers in excess of £270,000



23 Larkspur Close

South Ockendon, RM15 6JQ

Offers in excess of £270,000



Entrance

4'3 x 2'10 (1.30m x 0.86m)

Entrance door,

WC

5'4 x 2'6 (1.63m x 0.76m)

Low level WC, wash hand basin.

Hallway

17'11 x 3'3 (5.46m x 0.99m)

Storage cupboard, stairs to first floor, cupboard housing Warm Air heating system.

Kitchen/Diner

18' max x 9'10 max (5.49m max x 3.00m max)

Window to front, range of fitted storage cupboards, integrated fridge, freezer. space and plumbing for washing machine and oven. The worksurfaces incorporate the sink unit. Part tiled walls, open to

Living Room

15'11 x 10'9 (4.85m x 3.28m)

Window and patio doors to rear, feature fireplace, carpet, door to hallway.

First Floor

Landing

9'9 x 6'3 (2.97m x 1.91m)

Stairs to ground floor, airing cupboard

Bedroom One

15'11 x 9'1 (4.85m x 2.77m)

Two windows to front, carpet. storage cupboard.

Bedroom Two

14' x 8'9 (4.27m x 2.67m)

Window to rear, carpet.

Bedroom Three

10'1 x 7'1 (3.07m x 2.16m)

Window to rear, carpet

Bathroom

6' x 5'6 (1.83m x 1.68m)

Panelled bath with electric shower over, pedestal wash hand basin, low level WC, part tiled walls

Exterior

Front Garden

Hardstanding leading to entrance door

Rear Garden

Mainly laid to lawn with flowers and shrubs. Fencing to boundaries, gate to rear.



Road Map



Hybrid Map



Terrain Map



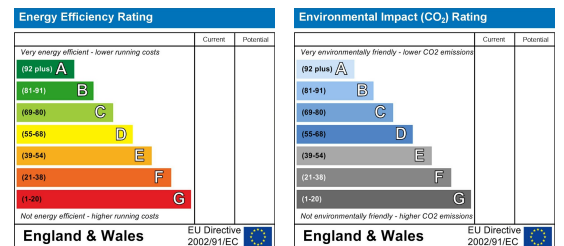
Floor Plan



Viewing

Please contact our Chelmsford Office on 01245 330764 if you wish to arrange a viewing appointment for this property or require further information.

Energy Efficiency Graph



These particulars, whilst believed to be accurate are set out as a general outline only for guidance and do not constitute any part of an offer or contract. Intending purchasers should not rely on them as statements of representation of fact, but must satisfy themselves by inspection or otherwise as to their accuracy. No person in this firm's employment has the authority to make or give any representation or warranty in respect of the property.