



Rothbury Gardens, TW7

£395,000

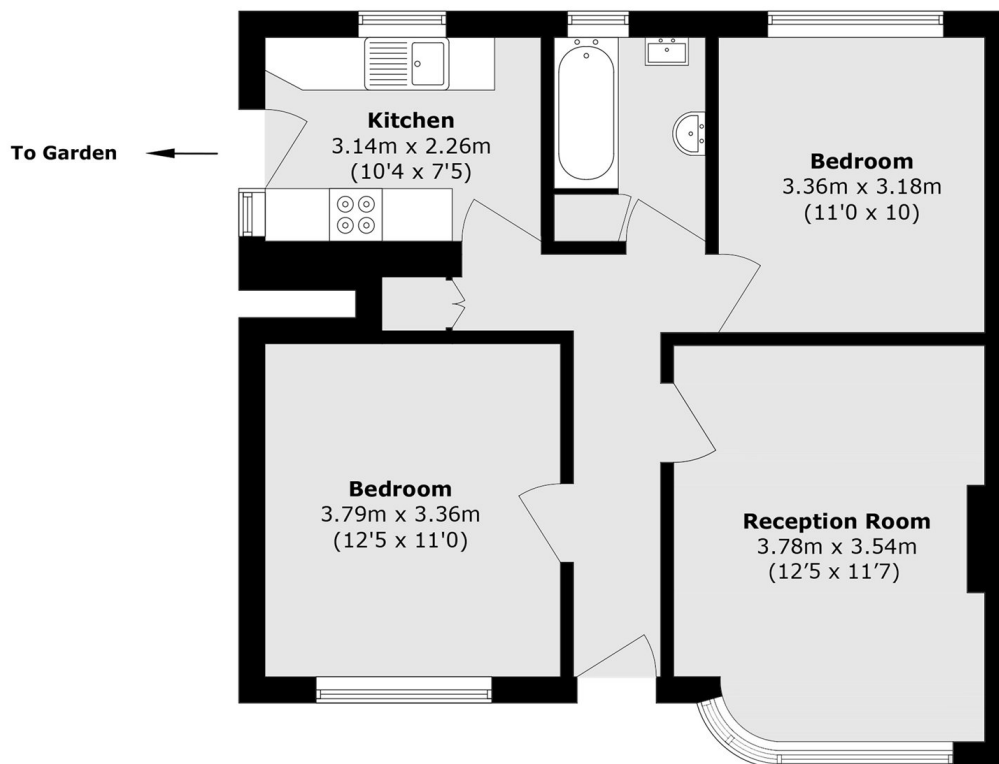
Offered to the market with no onward chain is this spacious and nicely presented two double bedroom ground floor maisonette set on the popular Duke Of Northumberland Estate. Further benefits include a driveway, a long lease in excess of 900 years and no service charge.

Rothbury Gardens is located in the popular and sought after Duke Of Northumberland Estate and is situated close to both Syon Lane Train Station and Osterley Station (Piccadilly Line). There are a number of excellent local parks and amenities

Features

- Ground Floor Maisonette
- Private Entrance
- Two Double Bedrooms
- Driveway / Garden
- Long Lease
- No Chain

Rothbury Gardens, Isleworth, TW7



Total area (approx.): 60.5 sq. m (651.2 sq. ft)