



# Elm Road

East Sheen, SW14

£2,000 per month  
(£461.54 per week)

This well-presented one-bedroom ground floor flat offers spacious and versatile accommodation, with a practical layout and excellent natural light throughout.

The accommodation comprises a welcoming entrance, a generous living room, a well-proportioned double bedroom, and a fitted kitchen with ample storage and workspace. In addition, the property benefits from an additional dining space.

A standout feature of this home is the substantial private rear garden. The property also benefits from off-street parking, adding further convenience.

Located on Elm Road, the property enjoys a convenient setting close to local shops, transport links, and everyday amenities. The area provides easy access to surrounding neighbourhoods, public transport connections, and main road links, offering excellent connectivity while maintaining a pleasant residential atmosphere. Nearby parks, schools, and community facilities further enhance the appeal of this well-positioned home.



# Elm Road

## East Sheen, SW14

- One Bedroom
- Private Garden
- Two Reception Spaces
- Off-Street Parking



---

**Minimum Term:** 12 months  
**Deposit Required:** £2,257.70  
**Local Authority:** London Borough of Richmond upon Thames  
**Council Tax Band:** D  
**EPC Rating:** D  
**Unfurnished**

---

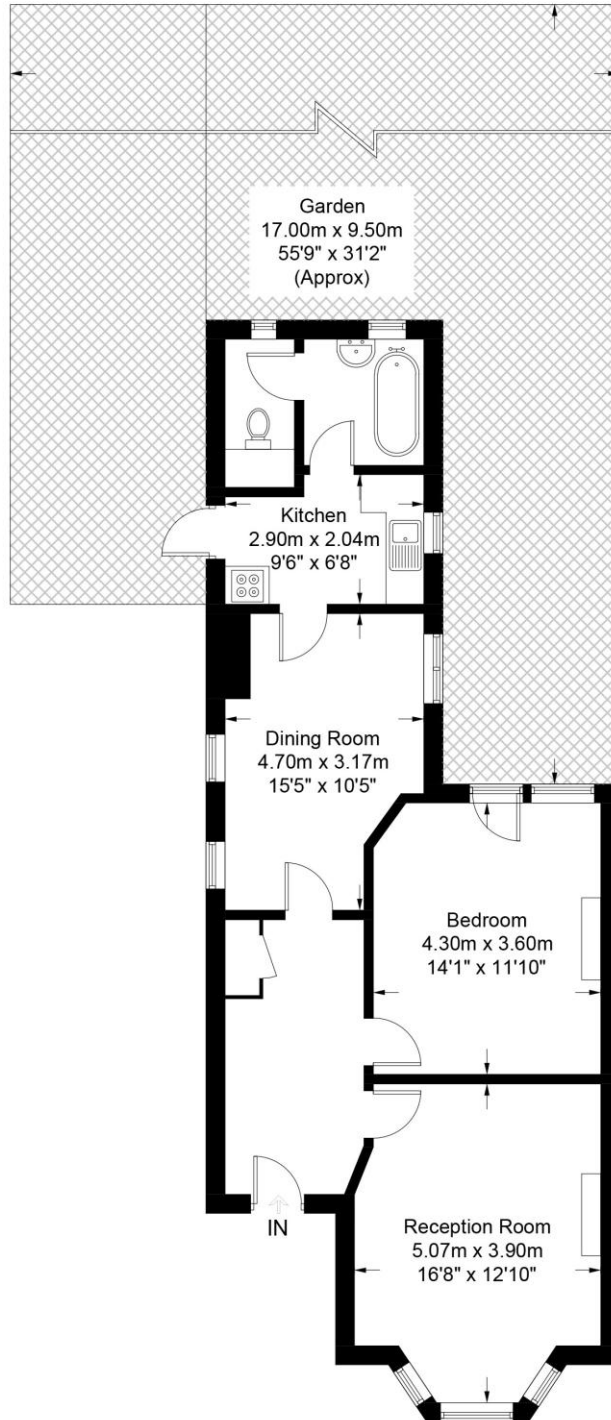
***Chestertons East Sheen Lettings***

254a Upper Richmond Road West  
East Sheen  
London  
SW14 8AG  
sheenlettingsusers@chestertons.co.uk  
02081040580  
chestertons.co.uk

Additional tenant charges apply (fees apply to non-AST tenancies only)  
Tenancy Agreement Fee: £300  
References per Tenant/Guarantor: £60  
Inventory check (approx. £100 – £250 inc. VAT)  
[chestertons.co.uk/property-to-rent/applicable-fees](https://www.chestertons.co.uk/property-to-rent/applicable-fees)

# Elm Road

Approximate Gross Internal Area = 71.4 sq m / 768 sq ft



Featherstone Leigh Ltd

Every attempt is made to assure accuracy, however measurements are approximate and for illustrative purposes only. (ID772204)

