



## NEWINGTON LONDON

3 Bedrooms

Apartment

Located in London

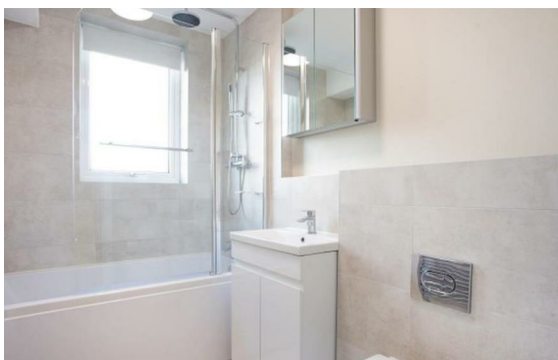
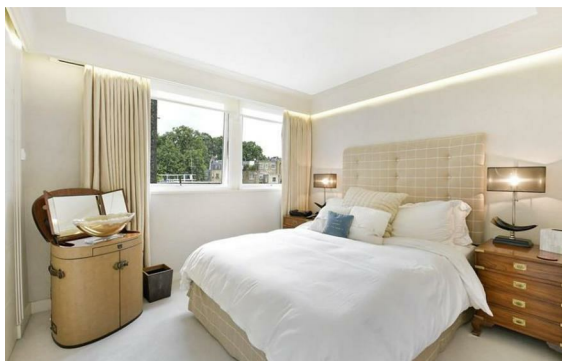
£1,000 Per Month



[info@newingtonstates.com](mailto:info@newingtonstates.com)

<http://www.newingtonstates.com>

020 7724 2233



A spacious apartment offering three bedrooms and three bathrooms, set within a secure gated development with lift access and porter. The property is finished to a high standard and includes air conditioning throughout.

Apartment is a short walk from Marble Arch, Paddington Station, and the shops and amenities of Oxford Street.

EPC rating: C

## Energy Efficiency Rating: D

Agents Note: Whilst every care has been taken to prepare these particulars, they are for guidance purposes only. All measurements are approximate and are for general guidance purposes only and whilst every care has been taken to ensure their accuracy, they should not be relied upon and potential buyers/tenants are advised to recheck the measurements.

# NEWINGTON LONDON

60 Upper Montagu Street

London

W1H 1SN

020 7724 2233

[info@newingtonstates.com](mailto:info@newingtonstates.com)

<http://www.newingtonstates.com>