



SIMPLE LIFE



SIMPLE LIFE



Queen Mary Road, Sheffield, S2

£1,360 Per Month

Welcome to Prince's Gardens, a stunning development with 3 & 4 bedroom homes exclusively for rent.

The Hazel offers bright and spacious accommodation throughout with a large fully-fitted kitchen/dining room just off the hallway.

To the rear of the property sits an impressive living area with French windows, offering views on to your garden space. Beautiful and light during the summer months. The first floor offers four bedrooms: two double bedrooms and two single rooms, with a family bathroom.

Prince's Gardens is situated only 2.5 miles away from Sheffield city centre. 0.25 miles away, there is a regular tram and bus service from Manor Top to Sheffield, with one or the other leaving every 5 minutes. The A57 is just over a mile away, giving easy access to the M1.

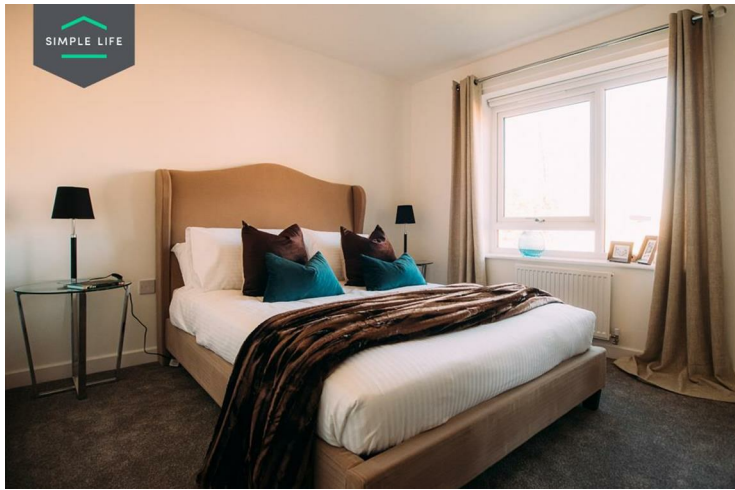
The site is close to Manor Top, a local shopping and amenity centre and there's also a ready supply of good primary schools and nurseries nearby including St Theresa's Catholic Primary School directly nextdoor to the development and Prince Edwards also within very close proximity of the site.

A flower-filled park, situated at the back of the site, is a beautiful feature of this development. Along with the leafy, tree-lined streets, this development will boast a very picturesque setting.

To find Prince's Gardens, please use postcode S2 1EU in your Satnav.

Deposit £1560
Holding Deposit £310
Council Tax B
Unfurnished
Available 10th August 2026





Key Features

- Car Parking Space
- Dishwasher
- Washing/drying machine
- Modern kitchen worktops and units
- Private back garden
- Security Alarm
- Fridge-freezer
- Oven and hob
- Carpets up the stairs and in the bedrooms
- Blinds in the bedrooms

Location

