



Guide Price
£550,000

Freehold

3x  1x  1x 

**Ulcombe Road,
Ulcombe, Kent, ME17**

OVER 60?

Secure this property
for up to **59% less!**

Wards
Helping you move forwards



Main features

- Beautifully updated property with scope to extend (Subject to planning)
- Detached garage and large driveway for multiple cars
- Semi rural location with links to local villages that offer train links and other amenities

Accommodation

GROUND FLOOR

- Porch
- Entrance Hallway
- Toilet
- Shower Room
- Kitchen: 14'1 x 11'10 (4.30m x 3.61m)
- Conservatory: 19'0 x 17'4 (5.80m x 5.29m)
- Lounge: 16'2 x 13'0 (4.93m x 3.97m)
- Bedroom 3: 16'7 x 16'5 (5.06m x 5.01m)
- Bedroom 2: 16'9 x 10'1 (5.11m x 3.08m)
- Bedroom 1: 20'3 x 13'5 (6.18m x 4.09m)

OUT BUILDING

- Garage

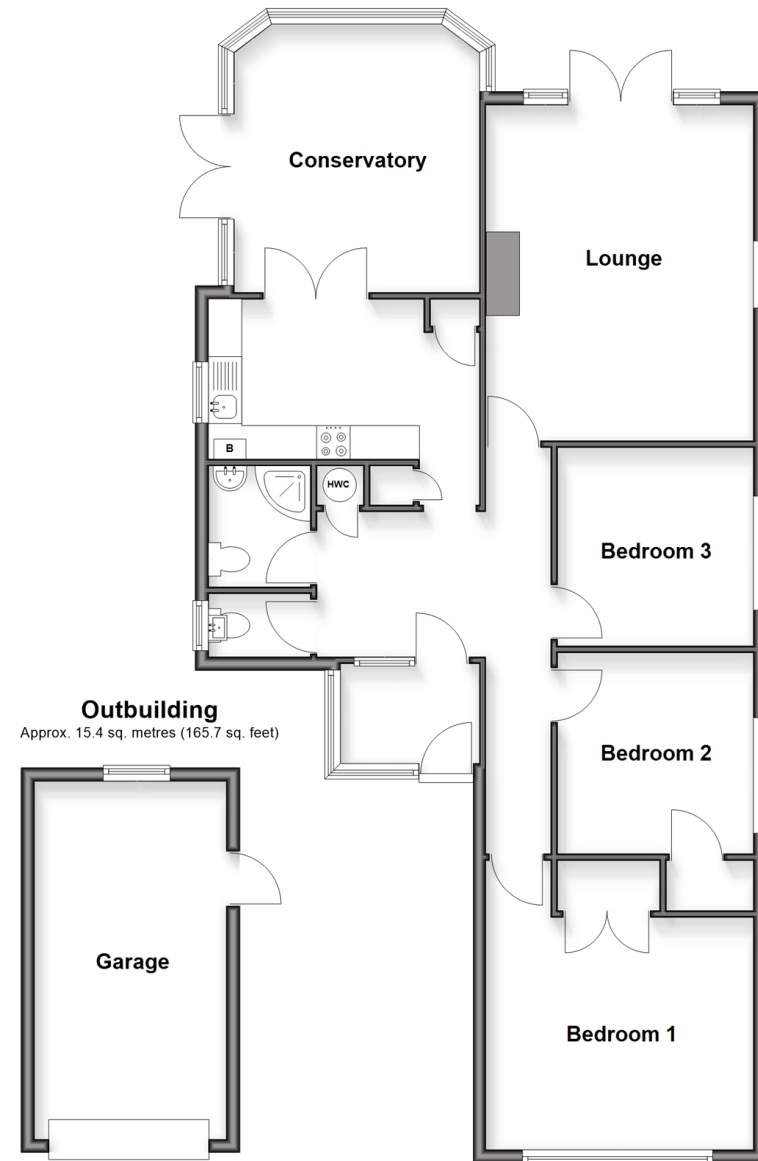
OUTSIDE

- Front and Rear Gardens
- Driveway

Call Headcorn - 01622 890435 ■ wardsof Kent.co.uk

- Legal advice should be taken to verify fixtures/fittings, planning, alterations and/or lease details
- Appliances & services are untested, dimensions are approximate and floor plans are not to scale
- Through a Homewise Home For Life Plan people aged 60+ can secure this property for up to 59% less, by purchasing a Lifetime Lease

Ground Floor
Approx. 103.3 sq. metres (1111.8 sq. feet)



13022338/20260309/DB/KMC