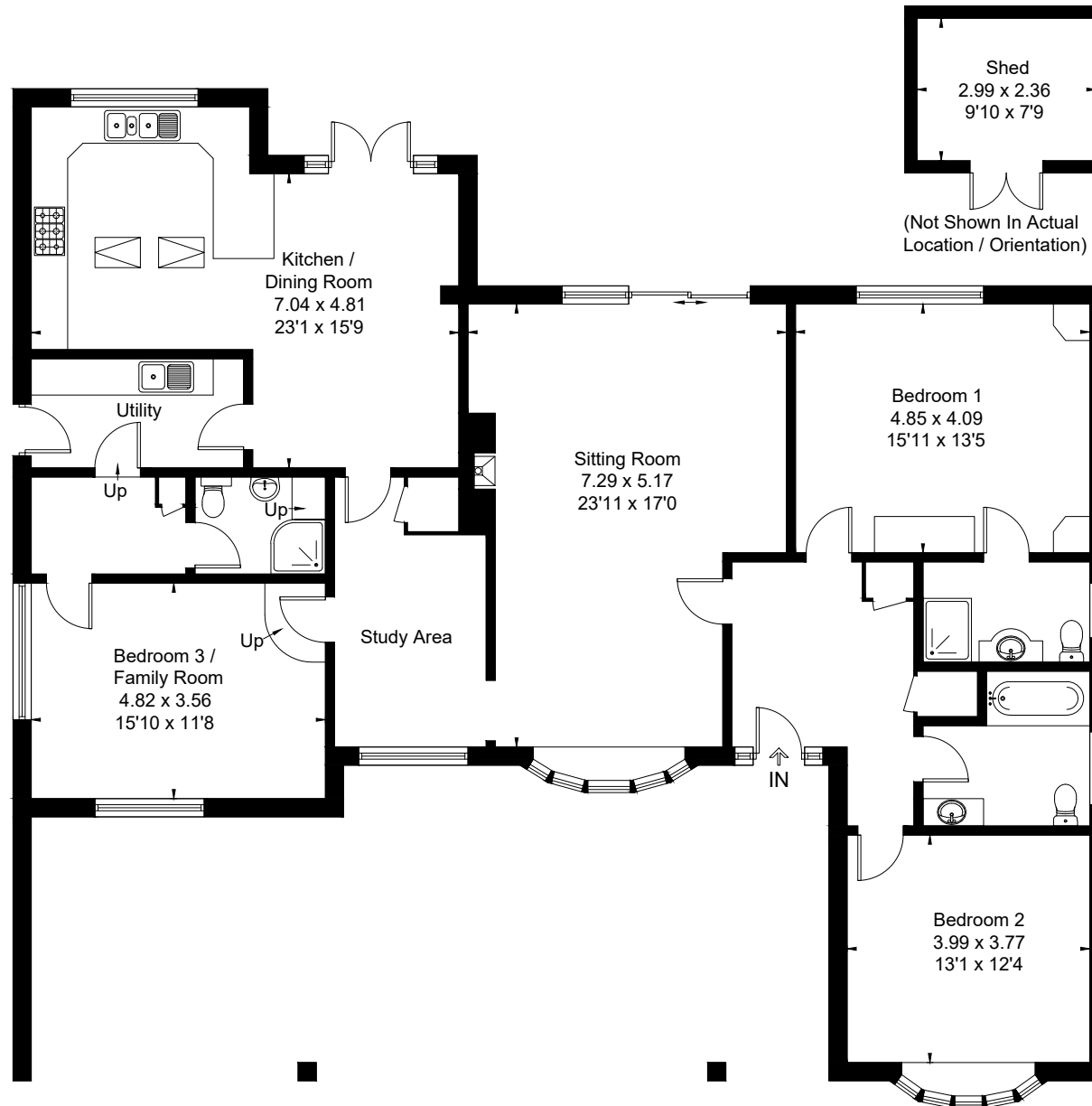


Approximate Floor Area = 171.8 sq m / 1849 sq ft

Outbuilding = 6.9 sq m / 74 sq ft

Total = 178.7 sq m / 1923 sq ft



This floor plan has been drawn in accordance with RICS Property Measurement 2nd edition.

All measurements, including the floor area, are approximate and for illustrative purposes only. @fourwalls-group.com #107180