

## Garratt Lane, SW17

£600,000

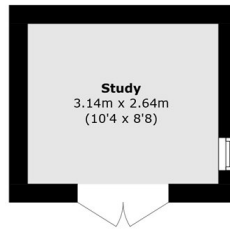
A truly rare split level maisonette in the heart of Tooting with a charming interior composed of a generous reception room, two double bedrooms, a stylish kitchen, a private garden and a three piece bathroom. Having been landscaped and arranged beautifully, the garden also offers a garden office/study. The property has huge potential for alterations and extending (STPP).

Garratt Lane is ideally placed for the vibrant shops, cafés, bars and restaurants of Tooting Broadway, with excellent transport links, local bus routes and London's oldest market all close at hand, yet the house itself remains quietly tucked away from the main thoroughfare.

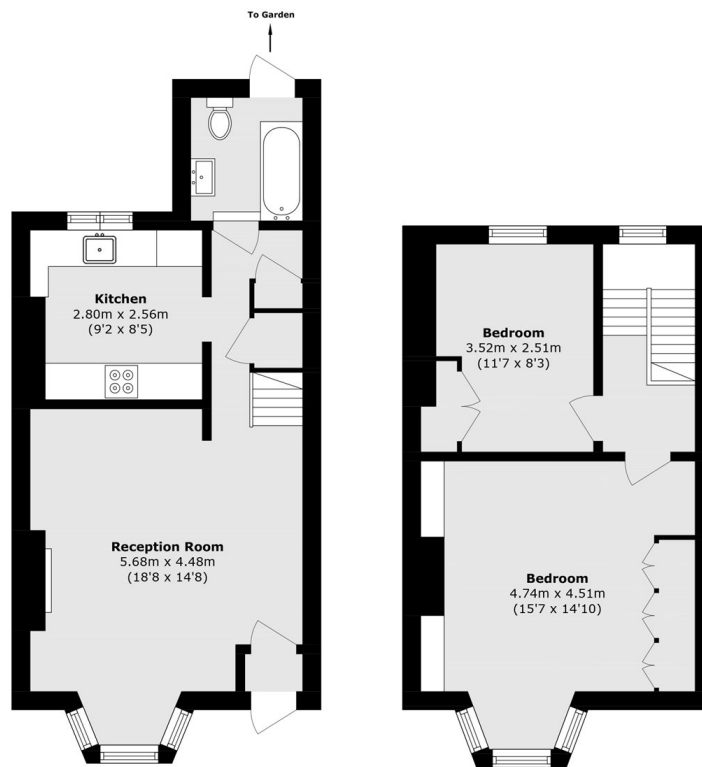
### Features

- Two Bedrooms
- Own Front Door
- Split Level
- Potential to Extend (STPP)
- Private Garden
- Outbuilding

# Garratt Lane, London, SW17



Ground Floor



Ground Floor

First Floor

Total area (approx.): 73.7 sq. m (793.3 sq. ft)  
Outbuilding area (approx.): 8.2 sq. m (88.2 sq. ft)