

abbotFox

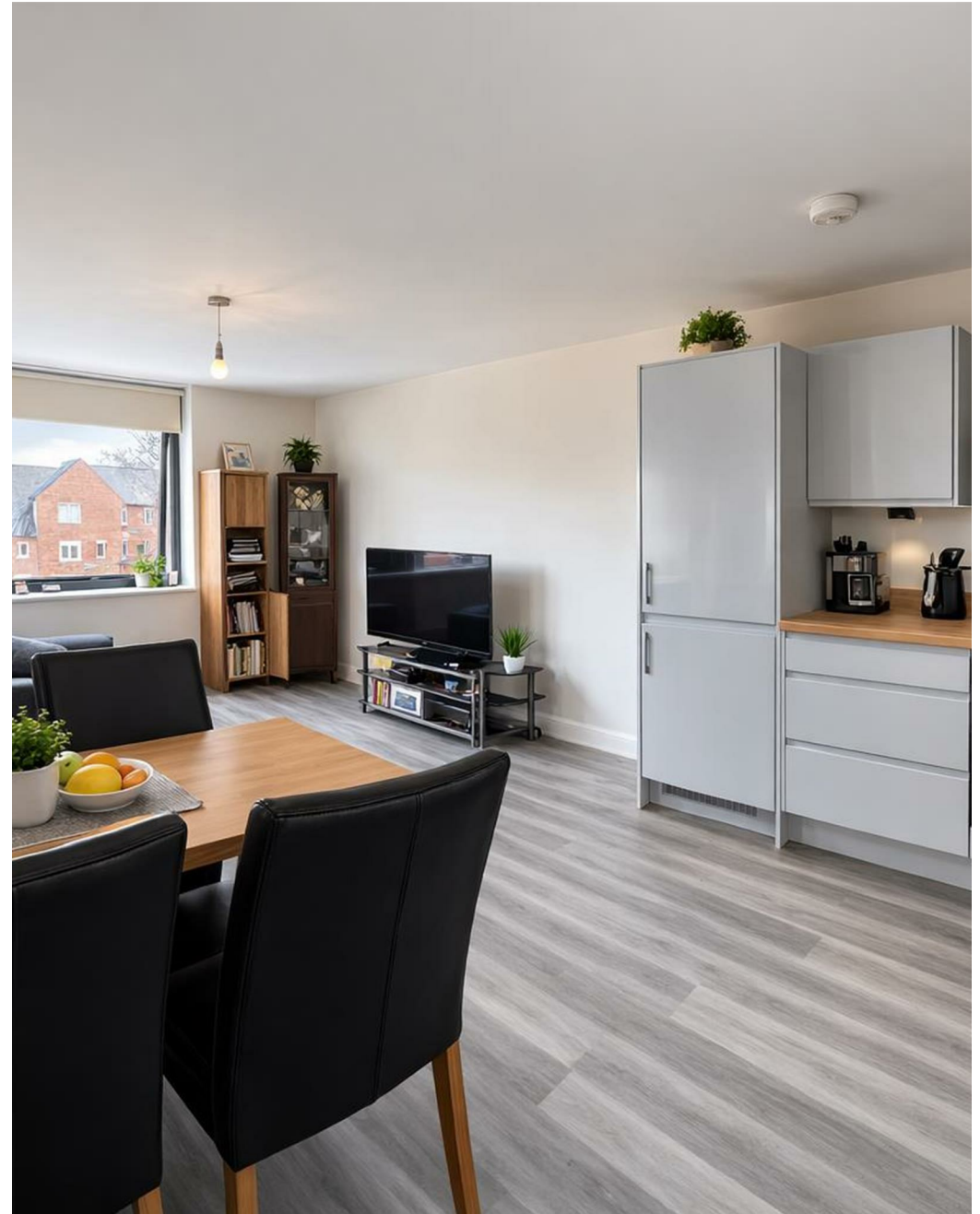


Prince Of Wales Road, Norwich
£1,300 PCM

“

We are a team of genuine individuals who hold a deep passion for both property and marketing. Collectively, we bring over 70 years of experience in the property market of Norfolk and Suffolk. Our affection for both counties runs deep, and we are enthusiastic about sharing our passion with you.

Colin McKenzie | **Branch Partner**







THE DETAIL _____

abbotFox presents this 2-bedroom apartment in Grosvenor House. Situated in the heart of Norwich City Centre, this well-presented apartment offers convenient modern living within the popular Grosvenor House development.

The property features a bright and spacious open-plan living area, incorporating the lounge, dining space and contemporary fitted kitchen. Large windows allow plenty of natural light to fill the room, creating an inviting space ideal for both relaxing and entertaining.

The apartment offers two well-proportioned bedrooms, providing flexible accommodation for professionals, couples or sharers. The property is served by a modern bathroom, fitted with a bath and overhead shower along with a clean white suite.

Grosvenor House is ideally located for those looking to enjoy city centre living, with Norwich's wide range of shops, restaurants, and amenities all within easy reach, along with excellent transport links including Norwich Train Station and the Riverside leisure complex.



THE HIGHLIGHTS _____

- NR1, Prince of Wales Road
- 2-bedroom apartment

Let's talk

01603 660000

sales@abbotfox.co.uk

[@abbotfox](#)

EPC RATING -

Disclaimer – In accordance with the Property Misdescriptions Act, the company abbotFox gives notice that all descriptions, references to condition, necessary permissions for use and other details are given in good faith and believed to be correct, but any purchaser should not rely on them as statements of fact, and must satisfy themselves by inspection or other means, as to their accuracy.