



4 Lowlands Drive
| NG12 5HG | £320,000

ROYSTON
& LUND

- Three Bedroom Detached Bungalow
- Recently Refurbished To A High Standard
- New Carpets And Flooring Throughout
- **CHAIN FREE**
- EPC Rating - D
- Immaculately Presented Throughout
- Integrated Kitchen Appliances
- Ample Off Street Parking With Driveway And Integral Garage
- Close By To Numerous Amenities
- Freehold - Council Tax Band - C





****CHAIN FREE****

****FULLY RENOVATED AND REFURBISHED****

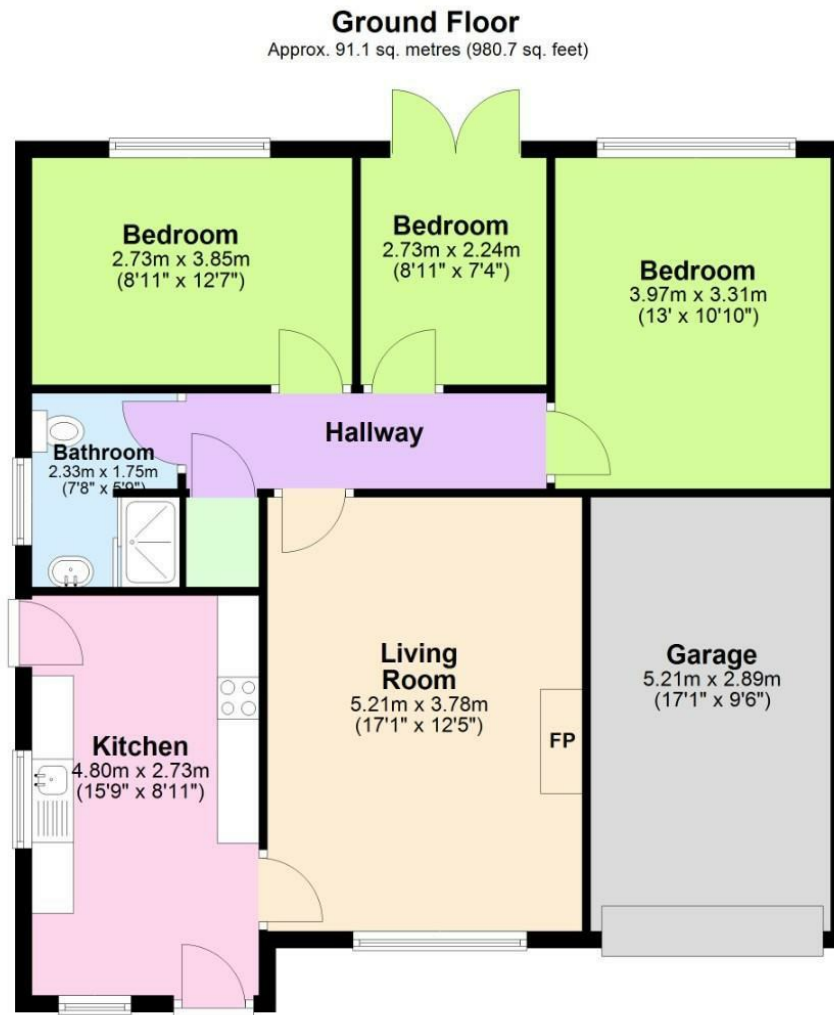
Royston and Lund are delighted to bring to the market this recently fully refurbished three bedroom detached bungalow located on Lowlands drive in Keyworth. Situated close by to numerous amenities such as local shops, pubs and cafes. Not to mention excellent transport links into the City Centre and the surrounding villages. This property would be an excellent fit for buyers wanting to downsize.

Interior accommodation comprises a kitchen diner upon entry that boasts integrated appliances from an eye level oven, hob and extractor fan along with more room for freestanding appliances. The kitchen also provides access to the rear garden via a side door. The living room is a generous size with a large front aspect window flooding the room with natural light, pieced together with a electric fireplace.

All three bedrooms are well proportioned doubles and overlook the rear garden. Bedroom three benefitting from French doors to the rear garden. All three bedrooms share a three piece shower room consisting of a walk in shower along with a wash basin and WC. The interior is completed with ample storage positioned behind the kitchen.

Facing the property there is spacious off street parking via a driveway and single integral garage. The rear garden is low maintenance with patio area off the rear elevation leading onto a lawn which is enclosed with fenced borders.





EPC

Energy Efficiency Rating

| | Current | Potential |
|---|-----------|-----------|
| Very energy efficient - lower running costs | | |
| (92 plus) A | | |
| (81-91) B | | |
| (69-80) C | | |
| (55-68) D | | |
| (39-54) E | | |
| (21-38) F | | |
| (1-20) G | | |
| Not energy efficient - higher running costs | | |
| | 68 | 77 |

England & Wales EU Directive 2002/91/EC

Environmental Impact (CO₂) Rating

| | Current | Potential |
|---|---------|-----------|
| Very environmentally friendly - lower CO ₂ emissions | | |
| (92 plus) A | | |
| (81-91) B | | |
| (69-80) C | | |
| (55-68) D | | |
| (39-54) E | | |
| (21-38) F | | |
| (1-20) G | | |
| Not environmentally friendly - higher CO ₂ emissions | | |

England & Wales EU Directive 2002/91/EC

These particulars, whilst believed to be accurate are set out as a general outline only for guidance and do not constitute any part of an offer or contract. Intending purchasers should not rely on them as statements of representation of fact, but must satisfy themselves by inspection or otherwise as to their accuracy. No person in this firm's employment has the authority to make or give any representation or warranty in respect of the property.

**ROYSTON
& LUND**