



Gloucester Place, W1U

£850 Per week

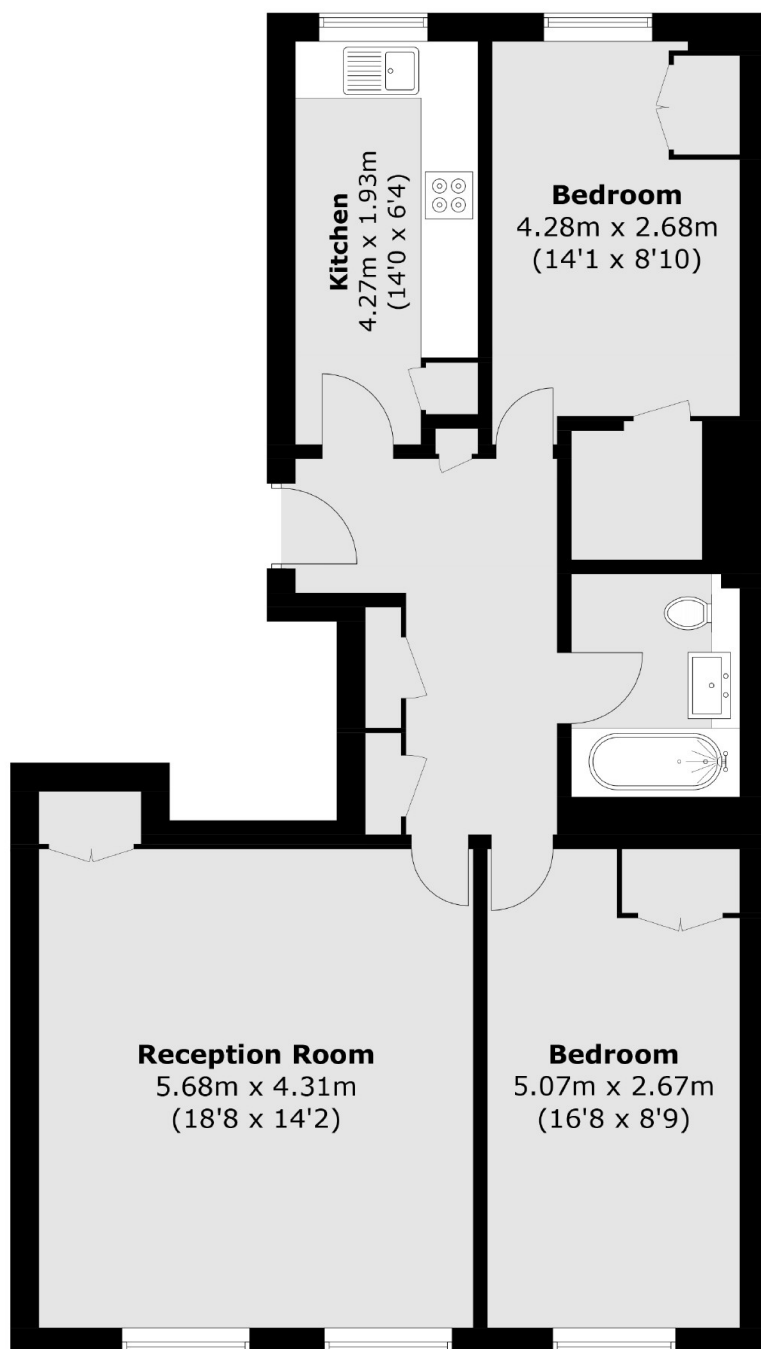
This two bedroom apartment is on the fourth floor of a period building on Gloucester Place. The property is well-presented and has a good sized reception room, separate kitchen, two double bedroom and a bathroom.

Gloucester Place is a block away from the shops, bars and restaurants of Baker Street and moments from the open spaces of Regent's Park.

Features

- Fourth Floor, with Lift
- Two Bedrooms
- One Bathroom
- Owned and Managed by The Portman Estate
- Complimentary Membership to Portman Concierge

Gloucester Place, London, W1U



Total area (approx.): 76.5 sq. m (823.4 sq. ft)

Dexters

Marylebone
53-55 Weymouth Street
London
W1G 8NJ
Lettings
0207 224 5545

Energy Rating: D. We aim to make our particulars both accurate and reliable. However they are not guaranteed; nor do they form part of an offer or contract. If you require clarification on any points then please contact us, especially if you're traveling some distance to view. Please note that appliances and heating systems have not been tested and therefore no warranties can be given as to their good working order.

 **RICS** | Regulated
Estate Agent
and Letting Agent

[dexters.co.uk](https://www.dexters.co.uk)