



**POOLE
TOWNSEND**

Peasholmes Lane, Barrow-In-Furness, LA13 0pz

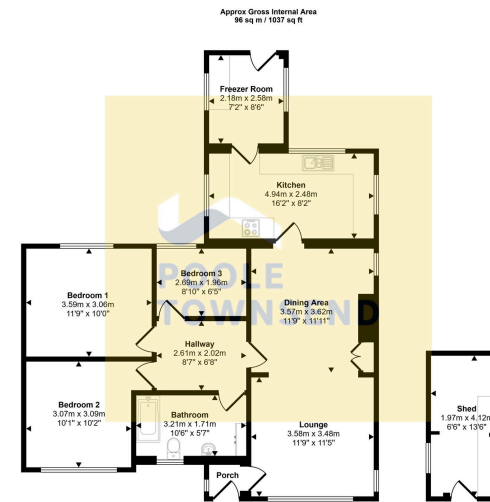
£425,000

3 1 1



- 3 Bed Detached Bungalow
- In A Beautiful Rural Location
- Stunning Views Across Morecambe Bay
- An Open Plan Lounge/ Dinning Room
- A Large Kitchen
- A Modern Bathroom
- An Extensive Garden
- A Gated Driveway
- A Private Patio
- A substantial block-built shed

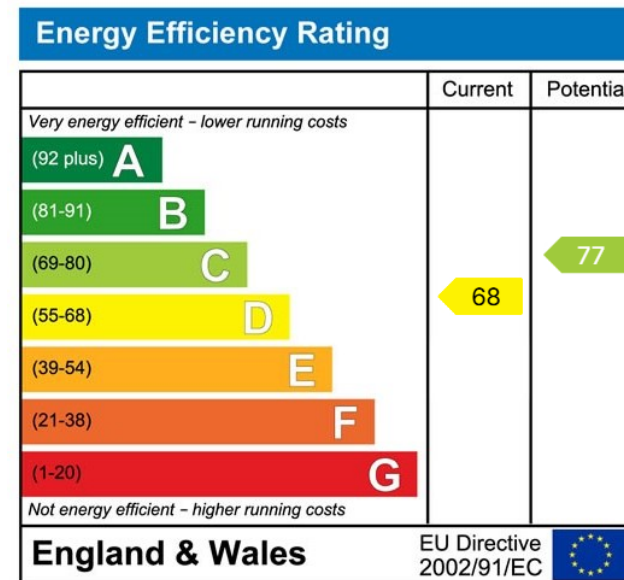




Floorplan Approx 88 sq m / 950 sq ft
Shed Approx 8 sq m / 87 sq ft

This floorplan is only for illustrative purposes and is not to scale. Measurements of rooms, doors, windows, and any items are approximate and no responsibility is taken for any error, omission or mis-statement. Icons of items such as bathroom suites are representations only and may not look like the real items. Made with Made Simple 360.

NEW! Nestled in a beautiful rural location, this extended three-bedroom detached bungalow offers a truly family-orientated home with stunning views across Morecambe Bay. The property boasts an open-plan lounge/dining room, a large kitchen, three comfortable bedrooms, and a modern bathroom. The extensive garden is a highlight, featuring a gated driveway with a turning area, raised vegetable beds, a private patio, and decking with a substantial block-built shed



Visit us at
www.pooletownsend.co.uk
enquiries@pooletownsend.co.uk

We are open
 Monday – Friday 9.00 – 5.00
 Saturday 9.00 – 1.00

Barrow 01229 811811
 Ulverston 01229 588111
 Grange 015395 33316
 Kendal 01539 734455
 Milnthorpe 015395 62044