

Sheringham Avenue, TW2

£2,700 Per calendar month

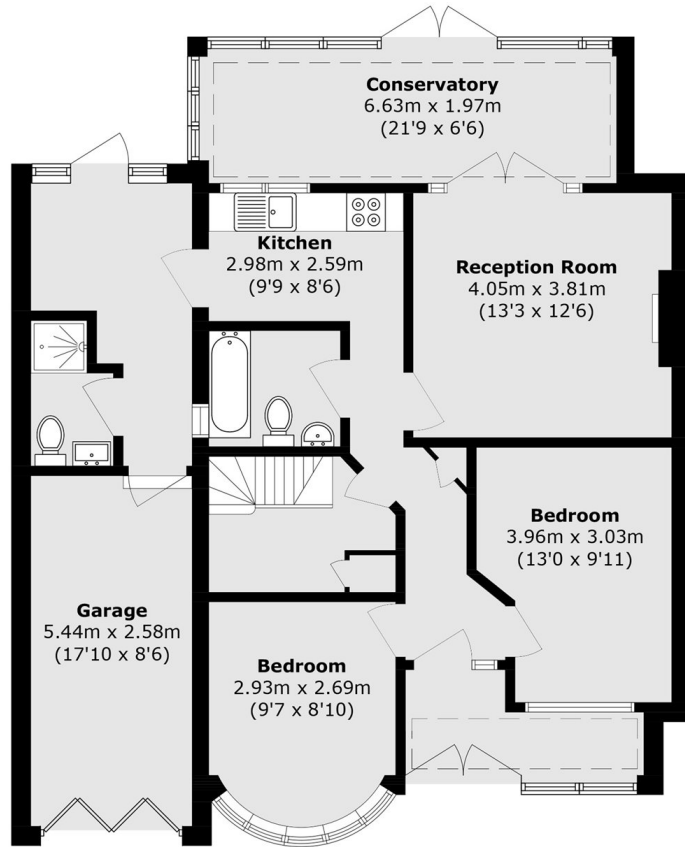
This recently renovated three bedroom bungalow comes with off-street parkings and a large private garden. The property has been recently refurbished with new wood flooring on the ground floor, new kitchen and a bathroom.

Sheringham is a popular road which offers the best of both worlds, being in a quiet residential area opposite the River Crane, yet located easily for access to Heathrow Airport, the A316 and Twickenham & Whitton town centres.

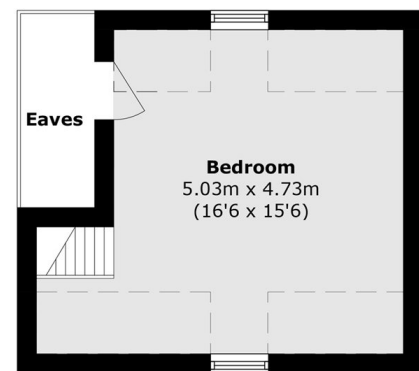
Features

- Recently Refurbished
- Three Bedrooms
- Private Driveway
- Garage
- Conservatory
- Large Private Garden

Sheringham Avenue, Whitton, TW2



Ground Floor



First Floor

Total area (approx.): 116.3 sq. m (1251.9 sq. ft)

Garage area (approx.): 13.6 sq. m (146.4 sq. ft)

(Excluding Eaves)