



St. Margarets Road, TW1

£1,295 Per calendar month

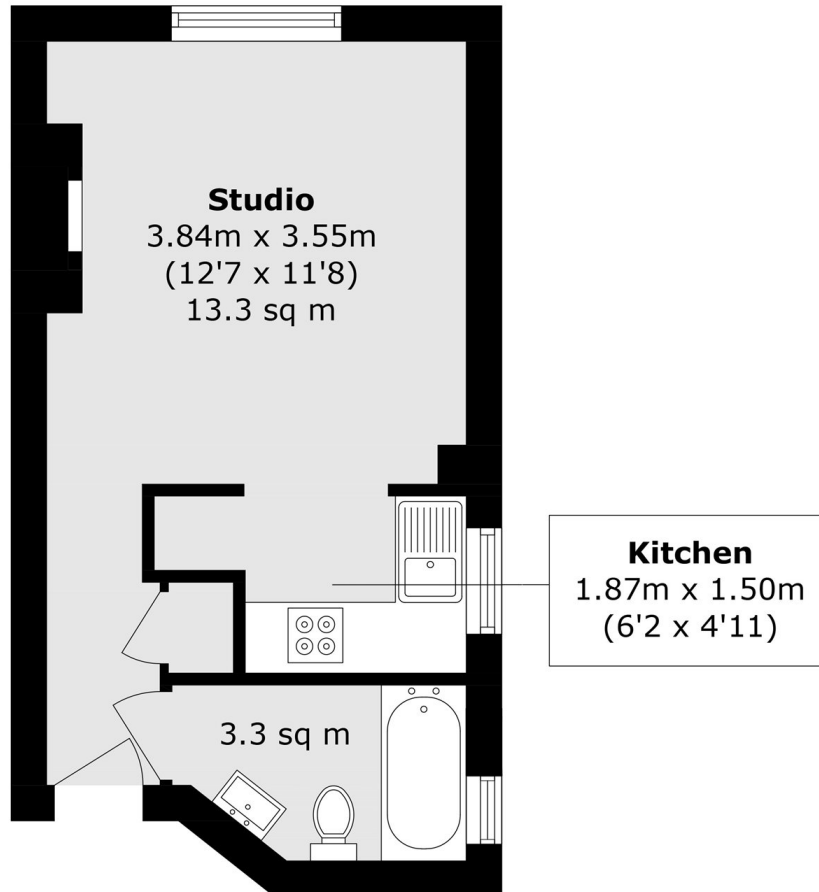
A newly redecorated second floor studio apartment, ideally located in the heart of St Margarets village. The property offers a bright and well-presented living space with a fresh, modern finish throughout and is available for immediate occupation.

Perfectly positioned for village living, moments from cafés, shops, restaurants and riverside walks. Close to Marble Hill Park, Moor Mead Park, the River Thames and Richmond within easy reach. St Margarets Station is just 0.2 miles away, with excellent road links via the A316, M3 and M25. Ideal for first-time buyers, commuters, pied-à-terre owners and investors.

Features

- Studio
- Newly Redecorated
- Village Location
- Available Immediately
- Separate Kitchen
- Excellent Transport Links

St. Margarets Road, Twickenham, TW1



Total area (approx.): 23.6 sq. m (254.0 sq. ft)