



## Hawks Road, KT1

### £550,000

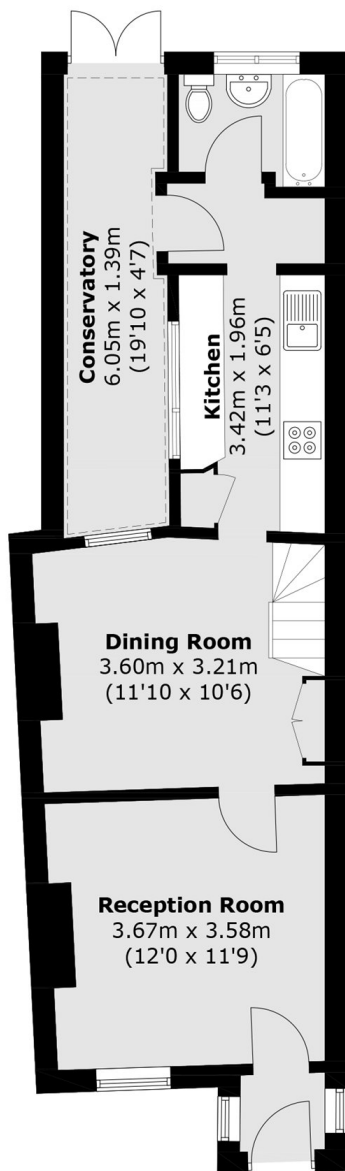
A charming Victorian cottage offering two double bedrooms and two reception rooms, presented with period features including a lovely fireplace in the front reception. The property also benefits from a modern kitchen and family bathroom. To the rear is a generous private garden with a low maintenance artificial lawn. Offered with no onward chain, this delightful home is ready to move into, yet still offers the potential to update or extend, subject to the usual planning permissions.

Located on Hawks Road, this attractive cottage is ideally positioned just 200 yards from Fairfield Recreational Park and within half a mile of both Norbiton Station and Kingston Station, as well as the vibrant shops, restaurants and amenities of Kingston town centre.

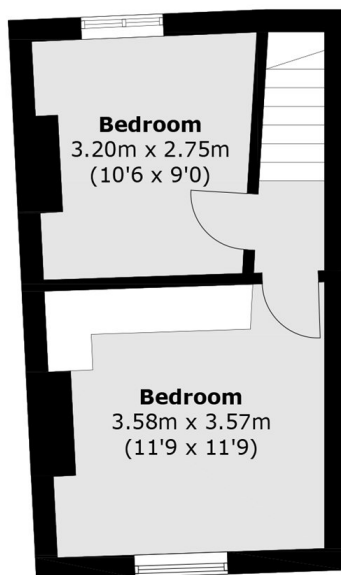
### Features

- Two Bedroom Period Cottage
- Two Reception Rooms
- Modern Kitchen
- Period Features
- No Onward Chain
- Approximately 50 ft Garden

# Hawks Road, Kingston Upon Thames, KT1



**Ground Floor**



**First Floor**

Total area (approx.): 76.0 sq. m (818.1 sq. ft)