



2 Arundel Close, Ruyton Xi Towns, Shrewsbury, SY4 1LU

4 bedroom detached house — £350,000 Freehold

2 Arundel Close, Ruyton Xi Towns, Shrewsbury, SY4 1LU

Coopergreenpooks.co.uk

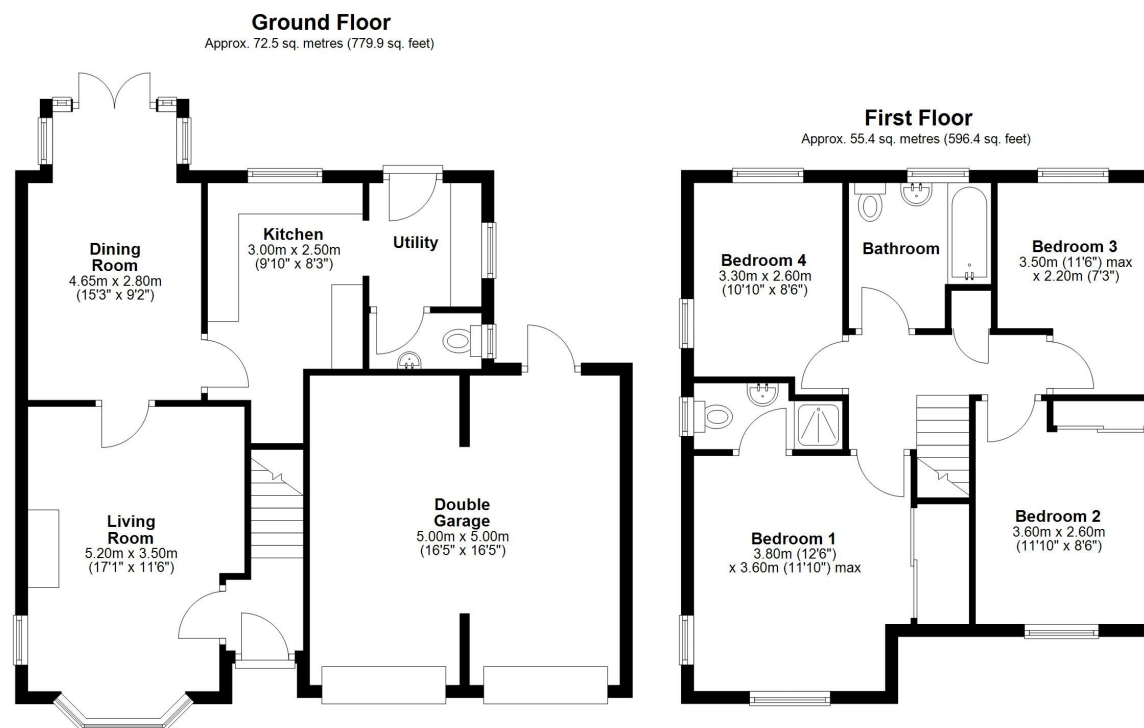
£350,000 Freehold— 4 bedroom detached house

sales@cgpooks.co.uk

Situated within a quiet cul-de-sac, a short walk from the centre of the village, this detached family house offers well-proportioned and practical accommodation, in need of general modernisation, while benefitting from a private rear garden, double garage, and driveway parking.

KEY FEATURES

- Good sized living room with feature fireplace and bay window to front
- Separate dining room, which has been extended, with windows and glazed double doors onto the garden
- Kitchen with a range of fitted units and space for appliances, opening onto the practical utility which connects to both the cloakroom and garden
- Master bedroom with built-in wardrobes and en-suite shower room
- Three further bedrooms, with the second also having built-in wardrobes, and a family bathroom with shower
- uPVC double glazed windows and gas fired central heating throughout
- Private rear garden, laid to lawn with paved sun terraces, planted borders, and gated access to side
- To the front of the property is a driveway providing plenty of parking and access to the double garage, which has power, lighting, door to rear, and potential for conversion
- Although in need of modernisation, this property offers plenty of potential to create a fantastic family home
- Quietly situated within a popular residential area, close to the local park, riverside walks, primary school, pub, and cafe/shop. The village of Baschurch is also just a 5-minute drive away and has many other amenities, including the excellent Corbet secondary school
- Sold with no upward chain



Total area: approx. 127.9 sq. metres (1376.2 sq. feet)







2 Arundel Close, Ruyton Xi Towns, Shrewsbury, SY4 1LU

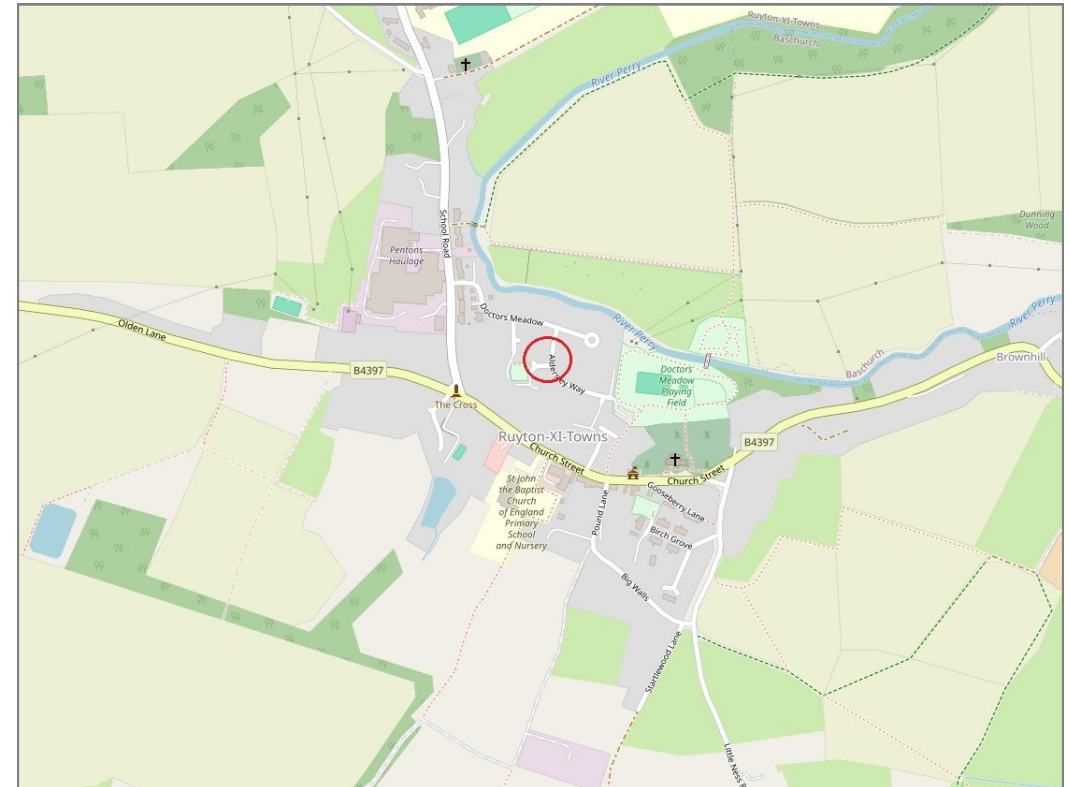
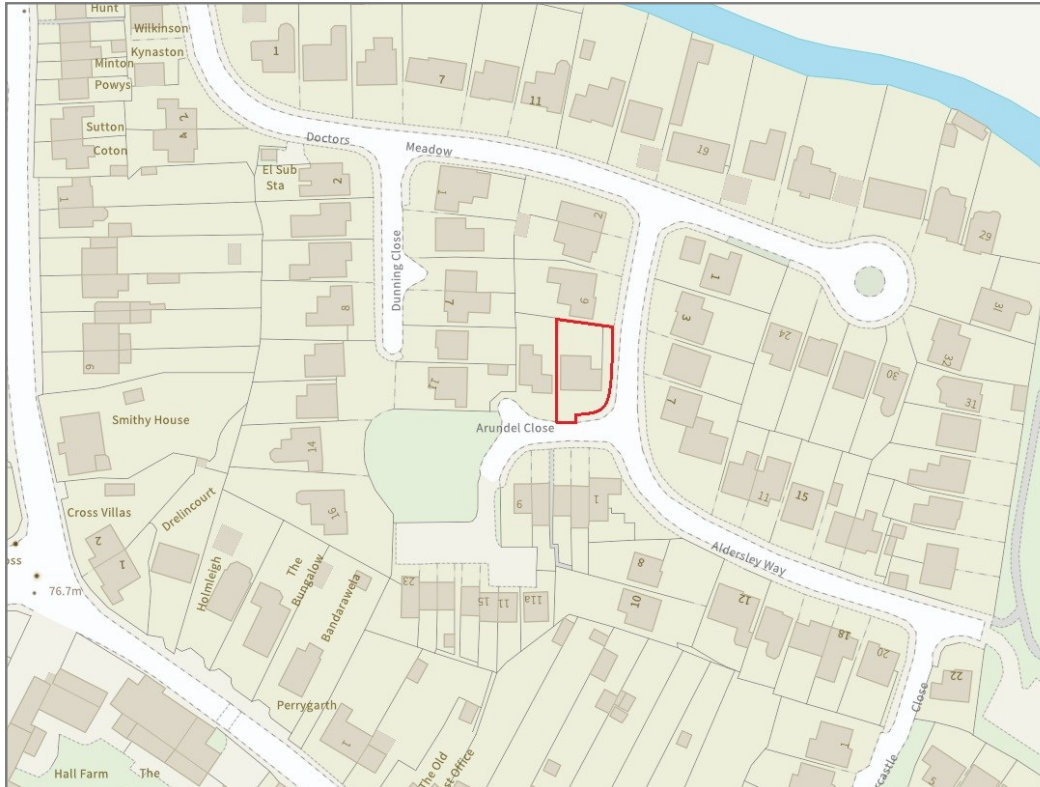
£350,000 Freehold— 4 bedroom detached house

sales@cgpooks.co.uk

rightmove 

 OnTheMarket.com

 **RICS**
Regulated by RICS



BOUNDARIES NOT CONFIRMED

Tenure	Freehold
Local Authority	Shropshire Council
Council Tax	Band D
EPC Band	Band C
Services	All mains services are connected

 **Expert mortgage advice available**

3 Barker St, Shrewsbury SY1 1QF

Cooper Green Pooks
01743 276666



Your home may be repossessed if you do not keep up repayments on your mortgage.

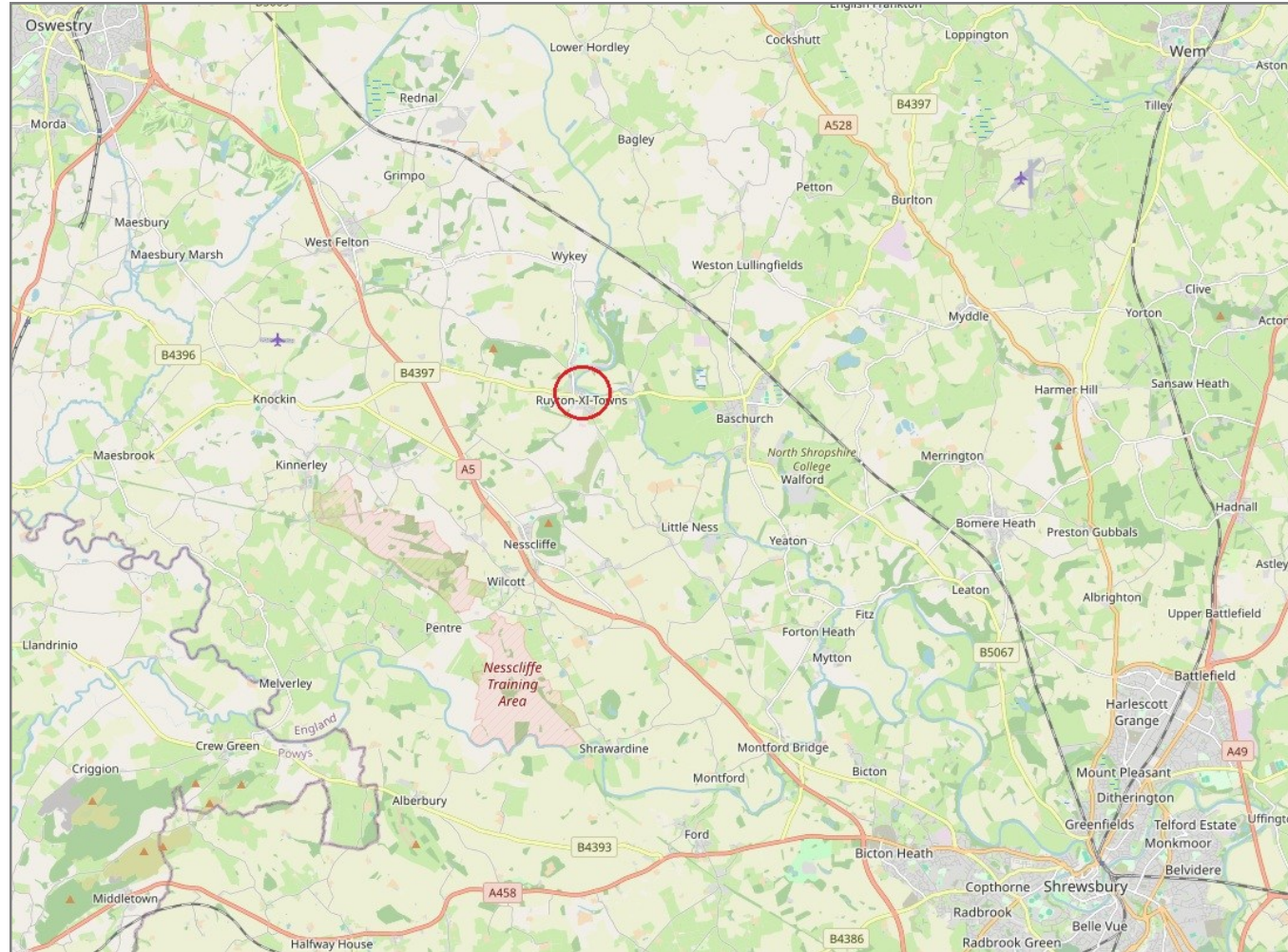
There may be a fee for mortgage advice. The actual amount you pay will depend upon your circumstances. The fee is up to 1% but a typical fee is 0.3% of the amount borrowed.

2 Arundel Close, Ruyton Xi Towns, Shrewsbury, SY4 1LU

Coopergreenpooks.co.uk

£350,000 Freehold— 4 bedroom detached house

sales@cgpooks.co.uk



IMPORTANT NOTICE: Cooper Green Pooks for themselves and for the lessors or vendors of this property whose agents they are give notice that: 1 No appliances, services or service installations have been tested and no warranty as to suitability or serviceability is implied. Any prospective purchaser or lessee is advised to obtain verification from their surveyor or solicitor. 2. The particulars are set out as a general outline only for the guidance of the intended purchasers or lessees and do not constitute, nor constitute part of, an offer or contract. 3. All descriptions, reference to condition and necessary permissions for use and occupation and other details are given in good faith and are believed to be correct but any intending purchasers or lessees should not rely on them as statements or representation of fact but satisfy themselves by inspection or otherwise as to the correctness of each of them. 4. No person in the employment of Cooper Green Pooks has any authority to make or give any representation or warranty whatsoever in relation to this property. 5. All rentals and prices are quoted exclusive of Stamp Duty, legal and surveyors fees and any other associated purchasers or lessees costs. 6. Floor plans are indicative only and should not be relied on. 7. The plan showing the boundary of the property is indicative only and has not been checked against the legal title so should not be relied on. 8. All dimensions, floor areas and site areas are only approximate and should not be relied on. Dimensions are generally maximum room dimension.