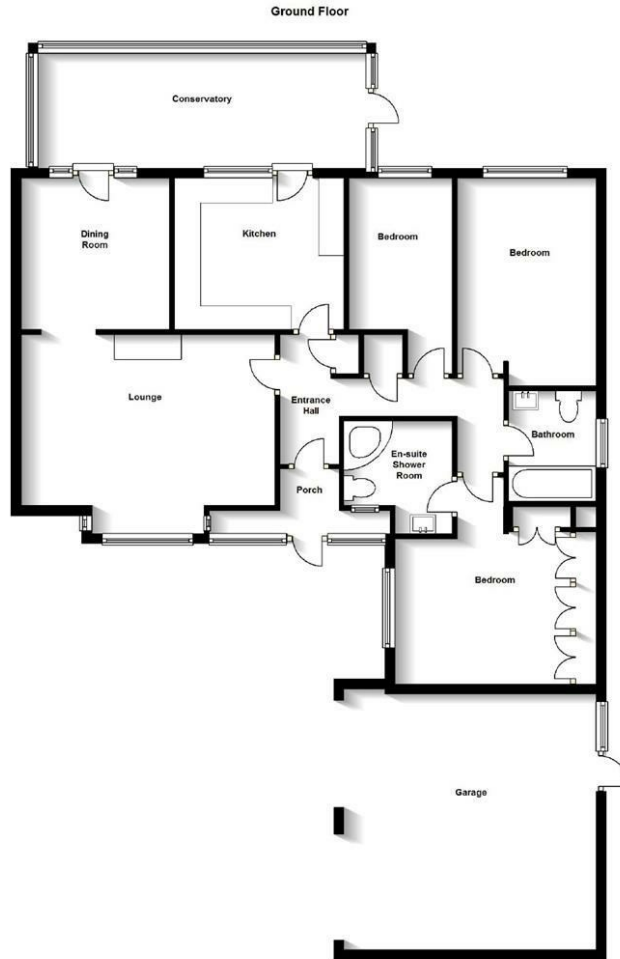




2 Saddler Avenue, Stone, Staffordshire, ST15 8YH

You might be forgiven for thinking this is just an average size bungalow, but behind the front door you will discover a spacious well appointed property which offers far more than may first meet the eye. Immaculately presented throughout with accommodation comprising: entrance porch, hallway, living room, dining room, family/garden room, kitchen with fitted appliances, master bedroom with en-suite shower room, two further bedrooms & family bathroom. The property occupies a lovely plot with sunny mature gardens & is situated on the edge of Aston Lodge Park. Benefitting from Upvc double glazing, off road parking, double garage & gas central heating. Unfurnished - Available immediately.

£1,450 Per Month



We accept no responsibility for any mistake or inaccuracy contained within the floorplan. The floorplan is provided as a guide only and should be taken as an illustration only. The measurements, contents and positioning are approximations only and provided as a guidance tool and not an exact replication of the property. Plan produced using The Mobile Agent.

Energy Efficiency Rating		Current	Potential
<i>Very energy efficient - lower running costs</i>			
(92 plus) A			82
(81-91) B			
(69-80) C			
(55-68) D		66	
(39-54) E			
(21-38) F			
(1-20) G			
<i>Not energy efficient - higher running costs</i>			
England & Wales		EU Directive 2002/91/EC	

Environmental Impact (CO ₂) Rating		Current	Potential
<i>Very environmentally friendly - lower CO₂ emissions</i>			
(92 plus) A			81
(81-91) B			
(69-80) C			
(55-68) D		55	
(39-54) E			
(21-38) F			
(1-20) G			
<i>Not environmentally friendly - higher CO₂ emissions</i>			
England & Wales		EU Directive 2002/91/EC	