



15 Camps Rigg

Livingston, West Lothian EH54 8PD



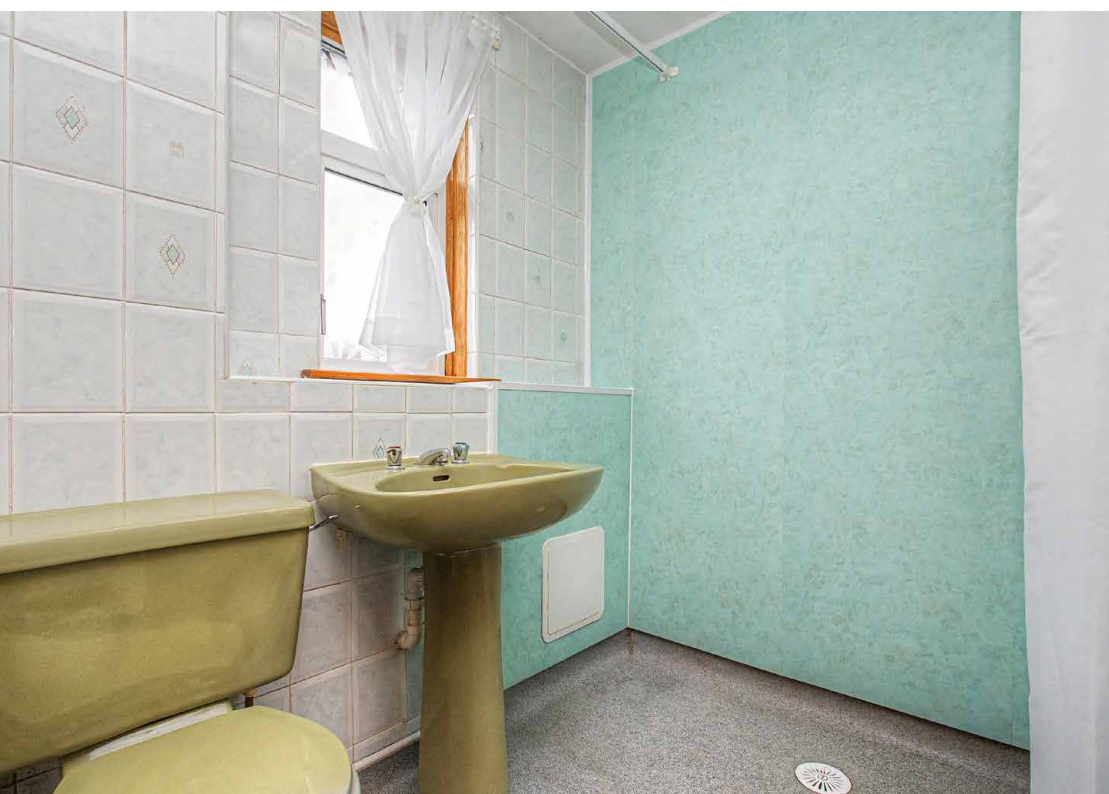
Property Summary

Quietly situated in an established development, close to amenities and transport links, this three-bedroom mid-terrace house offers a fantastic opportunity for buyers seeking a home they can modernise and personalise to their own tastes. The property enjoys an efficient layout with a spacious dual-aspect living and dining room, a kitchen with garden access, three bedrooms, a first-floor wet room and generous built-in storage throughout. Outside, there are private gardens to the front and rear, with the enclosed rear garden backing onto mature trees. An attached single garage and a front driveway provide further storage and off-street parking for multiple vehicles.

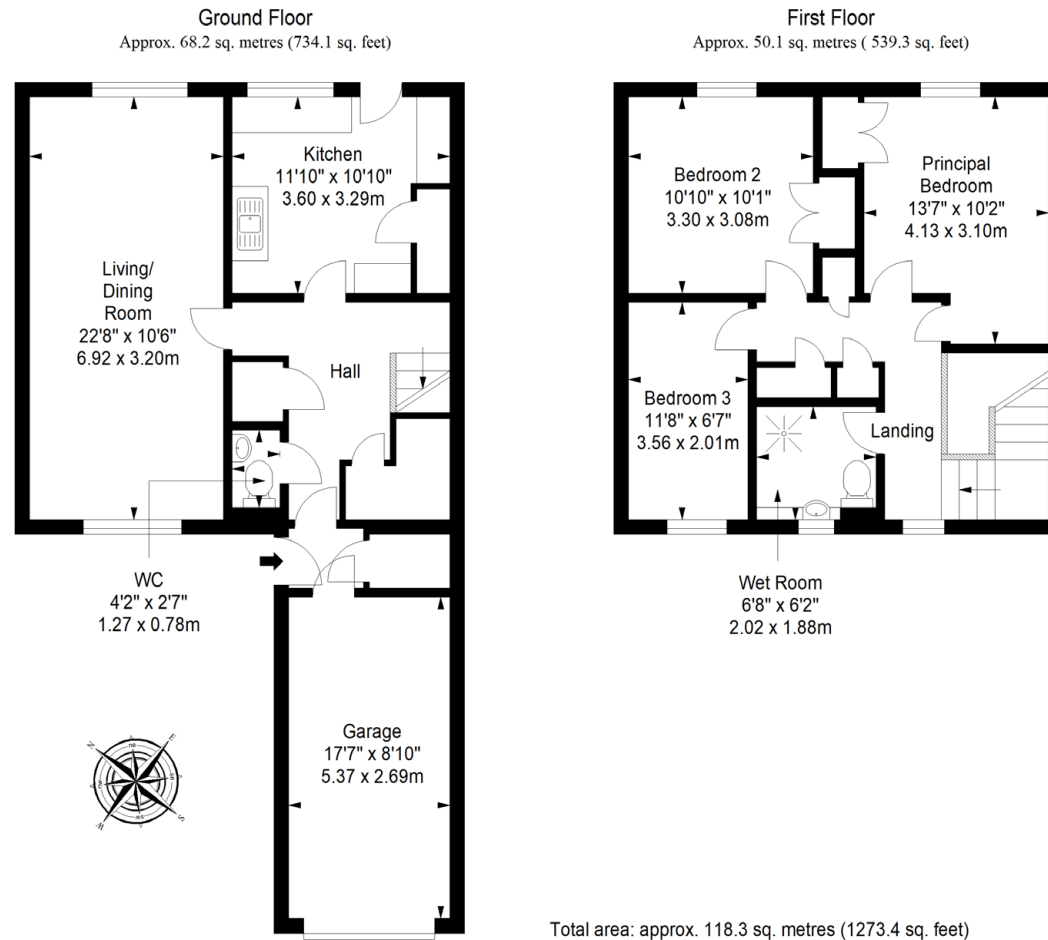
Extras: All fitted floor and window coverings and light fittings are included.

Property Features

- Three bedroom mid-terrace house
- Quiet residential setting in established development
- Close to local amenities and transport links
- Spacious dual-aspect living/dining room
- Kitchen with direct garden access
- Three bedrooms, including two doubles with storage
- First-floor wet room
- Ground floor WC
- Gas central heating and full double glazing
- Front and enclosed rear gardens
- Attached single garage and front driveway
- EPC Rating - C



Floorplan



All Enquiries to our Property Department:

Afton Henderson | ah@sneddons-ssc.co.uk | 01506 815832 | www.sneddonmorrison.co.uk
14 East Main Street, Whitburn, West Lothian EH47 0RB

IMPORTANT: The selling agents for themselves and for the sellers of the above property give notice that these particulars are for guidance only and their accuracy is not guaranteed. These particulars will not form part of any contract and interested parties should satisfy themselves in all aspects prior to submitting offers. The sellers do not bind themselves to accept the highest offer. S1106