



**Price**  
**£225,000**

**Leasehold**

3x  1x  2x 

**Osborne Road, Ryde,  
Isle of Wight, PO33**

**OVER 60?**

Secure this property  
for up to **59% less!**

**Pittis**   
Helping you move forwards



## Main features

- Nicely presented semi-detached house
- Separate lounge and dining room
- Enclosed rear garden
- Ideal for first time buyers or investors
- Located within Ryde and accessible to amenities and transport links

## Accommodation

### GROUND FLOOR

Entrance Hallway

Lounge : 12'3 x 11'4 (3.74m x 3.46m)

Dining Room : 12'5 x 11'11 (3.79m x 3.63m)

Kitchen : 10'11 x 8'1 (3.33m x 2.47m)

Bathroom

### FIRST FLOOR

Landing

Bedroom 1 : 12'0 x 11'6 (3.66m x 3.51m)

Bedroom 2 : 11'6 x 8'0 (3.51m x 2.44m)

Bedroom 3 : 11'3 x 8'0 (3.43m x 2.44m)

### OUTSIDE

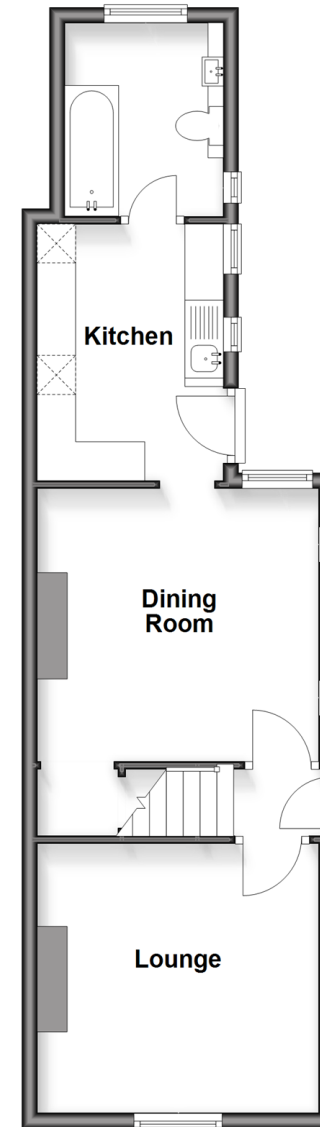
Front Garden

Rear Garden

Shed

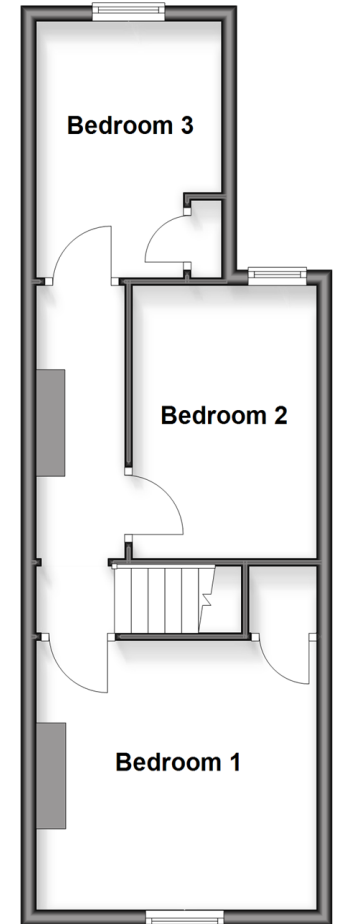
### Ground Floor

Approx. 42.9 sq. metres (462.1 sq. feet)



### First Floor

Approx. 37.6 sq. metres (404.8 sq. feet)



**Call Ryde - 01983 564646 ■ [pittis.co.uk](http://pittis.co.uk)**

- Legal advice should be taken to verify fixtures/fittings, planning, alterations and/or lease details
- Appliances & services are untested, dimensions are approximate and floor plans are not to scale
- Through a Homewise Home For Life Plan people aged 60+ can secure this property for up to 50% less, by purchasing a Lifetime Lease.



60426819/20250913/JH/AGAN