



Berkeley Road, Birmingham

burchell
edwards



Property Description

A beautifully presented mid-terraced home on Berkeley Road, this property blends classic period character with modern comfort, offering an inviting space ideal for first-time buyers, young families, or investors seeking a strong rental location. Thoughtfully maintained and filled with natural light, it delivers a warm, welcoming feel from the moment you step inside.

This home offers the perfect balance of character and convenience, with a layout that feels both practical and cosy. Berkeley Road is known for its friendly community feel and easy access to everyday amenities, making it a sought-after spot for buyers looking for comfort and connectivity.

Call us to arrange a viewing on 0121 742 1725!

Entrance Hallway

Central heating radiator and stairs to first floor accommodation.

Cloakroom

Electric and gas meters.

Lounge

Double glazed doors to rear elevation, central heating radiator and laminate flooring.

Kitchen

Double glazed window to front elevation, double glazed sliding doors to rear elevation, a range of wall and base units with work surface over incorporating a sink with drainer unit, space and connections for gas cooker and washing machine, central heating radiator and central heating boiler housed.



Landing

Double glazed window to front elevation, loft access, storage cupboard and all doors off.

Bedroom One

Double glazed window to rear elevation, central heating radiator, laminate flooring, large storage closet.

Bedroom Two

Double glazed window to rear elevation and central heating radiator.

Bedroom Three

Double glazed window to rear elevation and central heating radiator.

Bathroom

Two double glazed windows to front elevation, W.C, wash hand basin, bath, central heating radiator and tiling to walls.

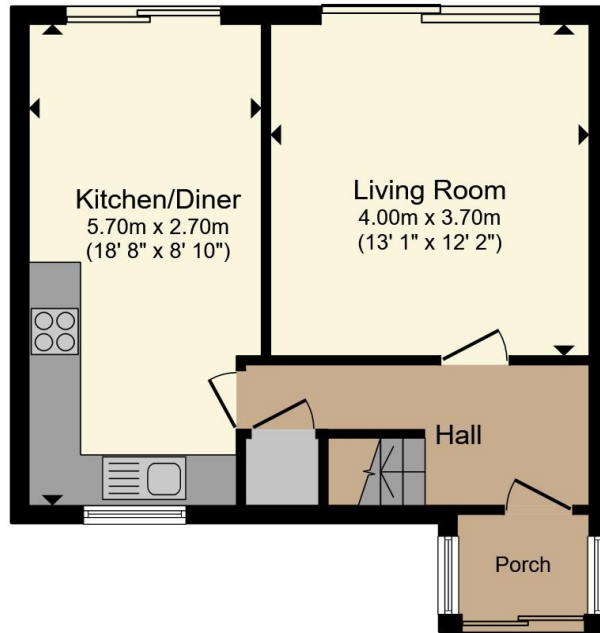
Rear Garden

Slabbed patio, access to garage and fencing to all boundaries.

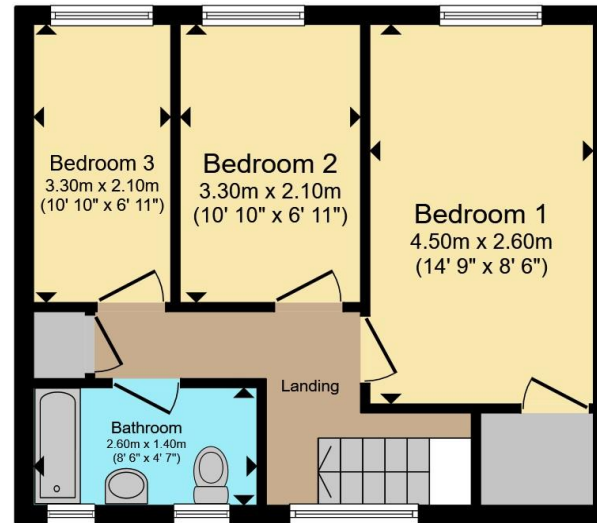








Ground Floor



First Floor

Total floor area 76.1 m² (819 sq.ft.) approx

This floor plan is for illustrative purposes only. It is not drawn to scale. Any measurements, floor areas (including any total floor area), openings and orientation are approximate. No details are guaranteed, they cannot be relied upon for any purpose and they do not form part of any agreement. No liability is taken for any error, omission or misstatement. A party must rely upon its own inspection(s). Powered by www.propertybox.io



To view this property please contact Burchell Edwards on

T 0121 742 1725
E sheldon@burchelledwards.co.uk

2208 Coventry Road Sheldon
 BIRMINGHAM B26 3JH

EPC Rating: D Council Tax
 Band: B

Tenure: Freehold

view this property online burchelledwards.co.uk/Property/SHL211719



1. MONEY LAUNDERING REGULATIONS Intending purchasers will be asked to produce identification documentation at a later stage and we would ask for your co-operation in order that there will be no delay in agreeing the sale. 2. These particulars do not constitute part or all of an offer or contract. 3. The measurements indicated are supplied for guidance only and as such must be considered incorrect. Potential buyers are advised to recheck measurements before committing to any expense. 4. We have not tested any apparatus, equipment, fixtures, fittings or services and it is in the buyers interest to check the working condition of any appliances.

Burchell Edwards is a trading name of Connells Residential which is registered in England and Wales under company number 1489613, Registered Office is Cumbria House, 16-20 Hockliffe Street, Leighton Buzzard, Bedfordshire, LU7 1GN. VAT Registration Number is 500 2481 05.

See all our properties at www.burchelledwards.co.uk | www.rightmove.co.uk | www.zoopla.co.uk

Property Ref: SHL211719 - 0005