




Morton Road, Eagle Farm South

Guide Price £375,000

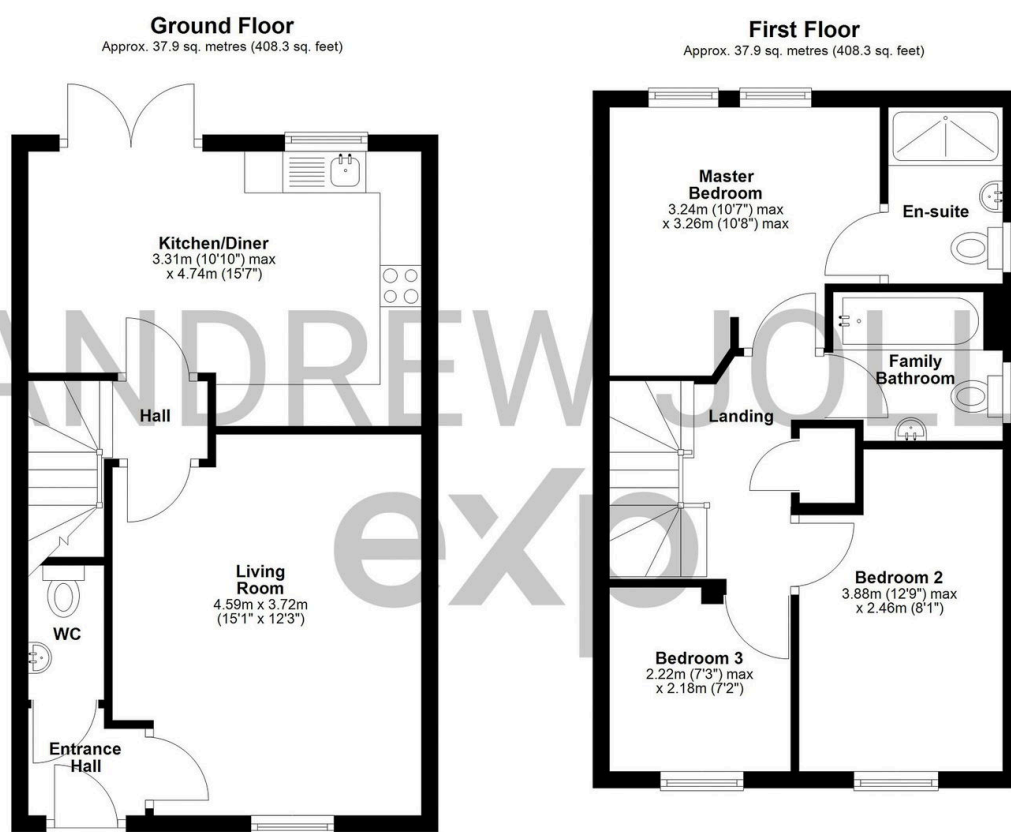
 3  2  1



A stylish three-bedroom semi-detached home, built in 2021 by David Wilson Homes, featuring an open-plan kitchen/diner with French doors, en-suite to the main bedroom, and off-road parking, located in the popular Eagle Farm South development.

Key Features

- Built in 2021 by David Wilson Homes
- Current owners from new
- Three-bedroom semi-detached home
- Popular Archford house type
- Move-in ready condition
- Owners re-locating
- Council Tax Band - C
- 828 Sq.Ft = 77 m²
- Approx. Monthly Utility Bills = £120pcm
- REF: AJ1276



Total area: approx. 75.9 sq. metres (816.5 sq. feet)

Floor plans are for illustrative purposes only and should be treated as general guidance. Dimensions are approximate to give a general indication of the floor layout only.
Plan produced using PlanUp.