

## Gloucester Place, W1U

£3,683 Per calendar month

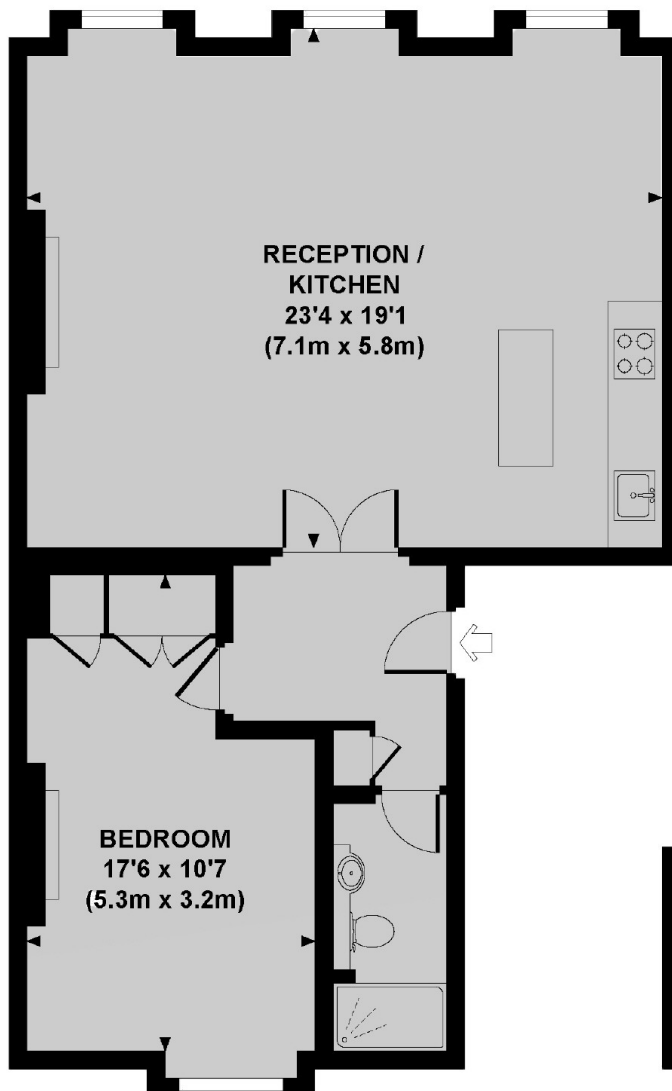
A one bedroom apartment on the first floor of a period townhouse in Marylebone. The property has been refurbished and decorated with great care and attention to detail, creating a stunning home.

Gloucester Place is moments from the shops, bars and restaurants of Baker Street. Madame Tussauds and The Sherlock Homes Museum are also close by.

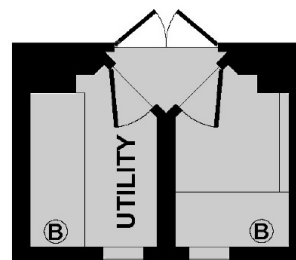
### Features

- One Bedroom
- One Bathroom
- First Floor
- Wood Flooring
- Period Features
- Ample Storage

# Gloucester Place, London, W1U



FIRST FLOOR



FIRST FLOOR  
HALF LANDING

Approx. gross internal area 724 Sq Ft. / 67.3 Sq M.

Approx. gross internal area 755 Sq Ft. / 70.2 Sq M. Inc. Utility