



The Bewdley Eastrea Road, Whittlesey Peterborough
£350,000 Freehold

**Sharman
Quinney**

Key Features



- Brand New
- Main bedroom with en-suite
- Integral garage and driveway with side-by-side parking for 2 cars
- Spacious Lounge
- Open-plan kitchen diner with French doors onto the garden

Stunning Four-Bedroom Detached Family Home with Garage & Spacious Living Throughout

This beautifully designed four-bedroom detached home offers generous living spaces, modern conveniences, and a thoughtfully planned layout ideal for family life. With an integral garage, open-plan kitchen/dining area, two bathrooms plus a ground-floor WC, and ample storage, this property perfectly blends comfort and functionality.



Ground Floor

A welcoming lobby leads into a bright and spacious lounge with a feature front window, creating a relaxing space for everyday living. The heart of the home is the impressive open-plan kitchen and dining area, complete with French doors opening onto the rear garden—perfect for entertaining and family gatherings.

The kitchen benefits from a practical layout with integrated appliances, ample worktop space, and direct access to a handy utility room with external door. A convenient ground-floor WC is also located off the utility.

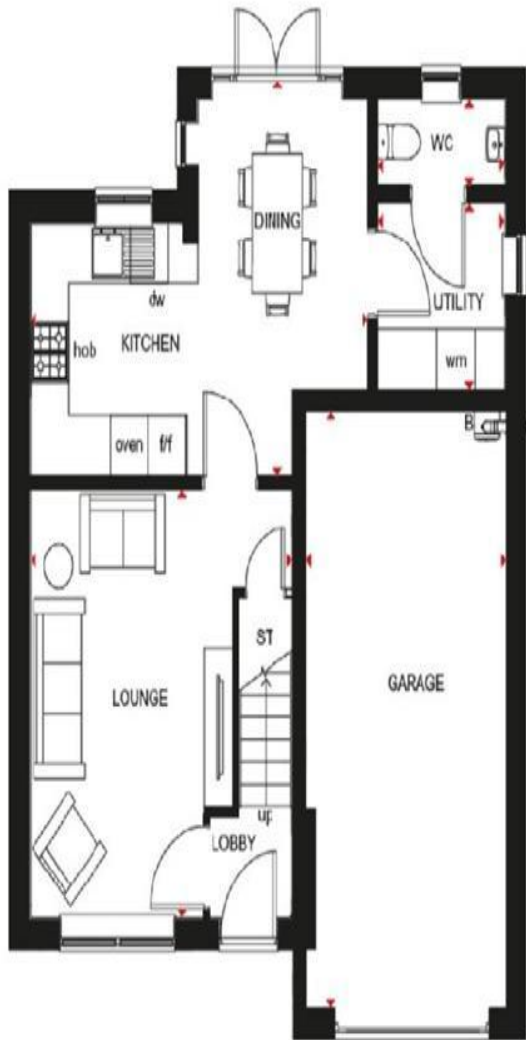
Internal access from the hallway leads directly into the large integral garage.

Whittlesey Lakeside is a new homes development located on the edge of the popular market town of Whittlesey.

Minutes from your home, you will find the bustling town centre where you can enjoy the independent eateries and pubs, a range of shops as well as a library and leisure centre. The town has excellent road links - with easy access to the A605, A1 and A47.

Explore miles of Cambridgeshire countryside within walking distance. Ferry Meadows Country Park and Crown Lakes are just a short drive away. Fenland Aqua Park is also on your doorstep.





** Hot water cylinder to selected plots for air source heat pump technology

First Floor

The first-floor landing connects all four well-proportioned bedrooms. The luxurious principal bedroom features fitted wardrobes and its own private en-suite shower room. Bedrooms two, three, and four offer flexible space ideal for children, guests, or a home office. A contemporary family bathroom completes the upper floor.

Call to arrange your viewing and to get more information.

To view this property call Sharman Quinney on:
01733 205000

Selling your property?

Contact us to arrange a **FREE** home valuation.

 01733 205000

 46a Market Street, Whittlesey, PETERBOROUGH,
Cambridgeshire, PE7 1BD

 whittlesey@sharmanquinney.co.uk

 www.sharmanquinney.co.uk



 SCAN ME



Sharman Quinney Holdings Limited is registered in England and Wales under company number 4174227, Registered Office is Cumbria House, 16-20 Hockliffe Street, Leighton Buzzard, Bedfordshire, LU7 1GN. VAT Registration Number is 500 2481 05.

1: These particulars do not constitute part or all of an offer or contract. 2: The measurements indicated are supplied for guidance only and as such must be considered incorrect. 3: Potential buyers are advised to recheck the measurements before committing to any expense. 4: Sharman Quinney has not tested any apparatus, equipment, fixtures, fittings or services and it is the buyers interests to check the working condition of any appliances. 5: Sharman Quinney has not sought to verify the legal title of the property and buyers must obtain verification from their legal representative. 6: Intending purchasers will be asked to produce identification documentation at a later stage and we would ask your co-operation in order that there will be no delay in agreeing the sale. Ref: WHT204869 – 0003 – Plot 157

