

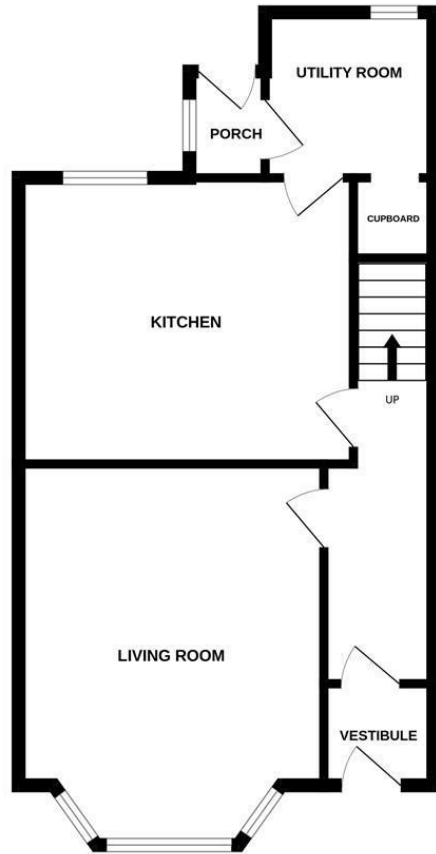


**10 Cawdor Road,
Crown,
Inverness, IV2
3NR**

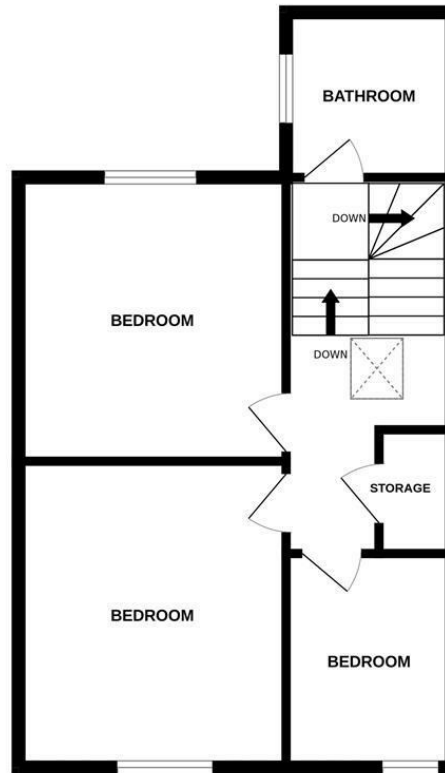
Offers Over £325,000



GROUND FLOOR



1ST FLOOR



Extras: Add text here
 Services: Add text here
 Council Tax: E
 Floor Area: 1151.74 sq ft
 Date of Entry: Add text here
 Viewing: Don't delay – get in touch with Tailormade Moves today to arrange a viewing

CONTACT

The Greenhouse Beechwood
 Business Park
 Inverness
 Highland
 IV2 3BL

E: info@tailormademoves.co.uk
 T: 01463 233218

EPC Rating: D
 Council Tax Band: E

