

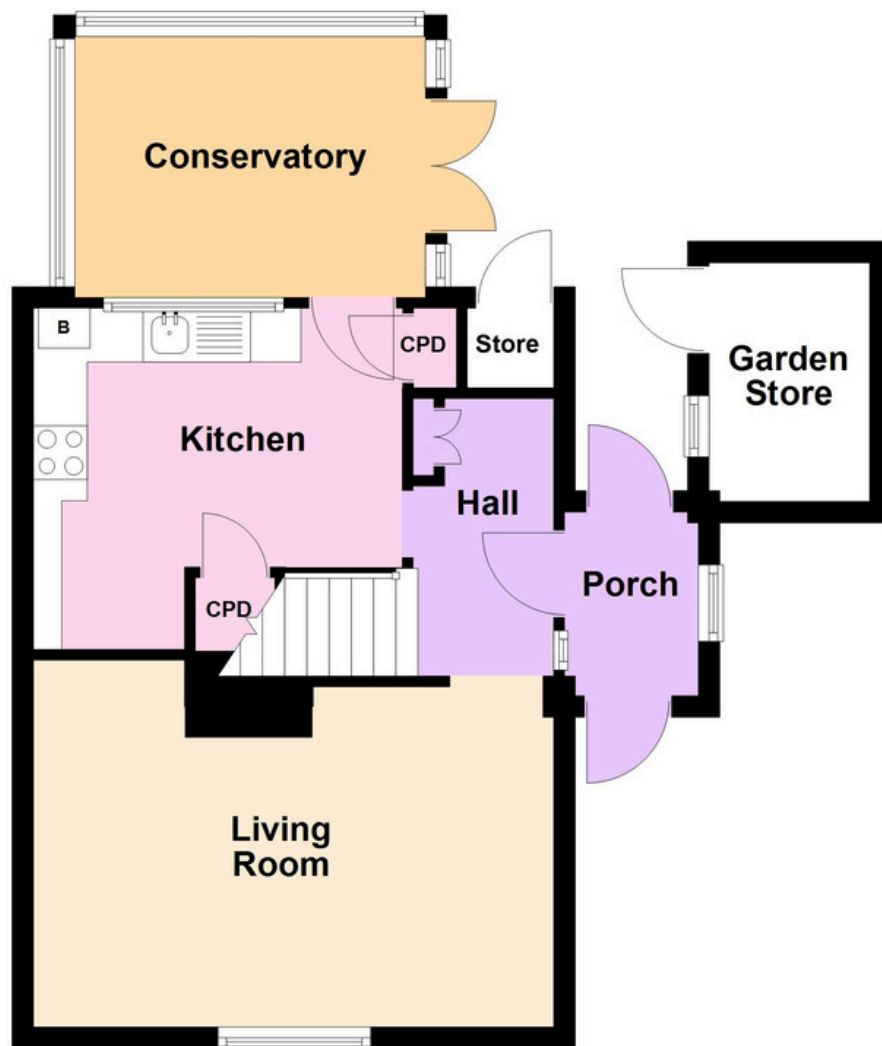


27 The Grove, Warmley, BS30 8AG

£270,000

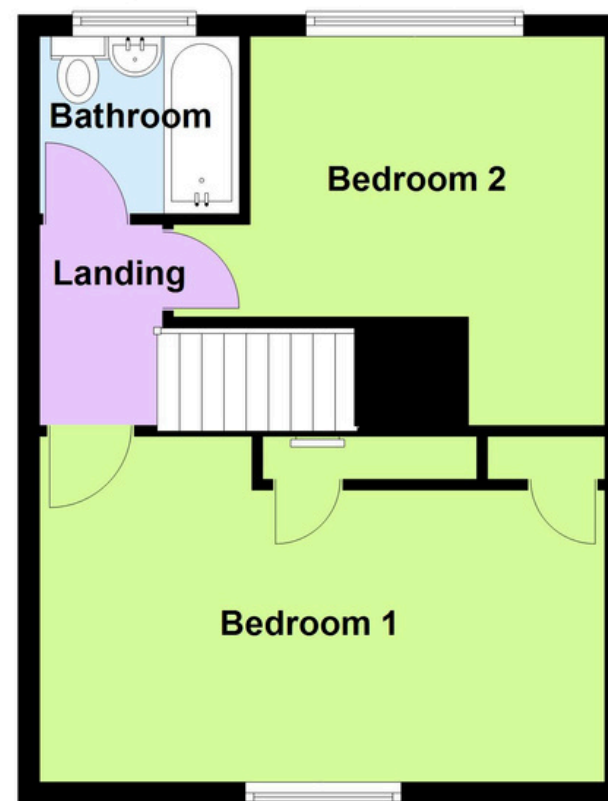
Ground Floor

Approx. 46.2 sq. metres (497.0 sq. feet)



First Floor

Approx. 36.4 sq. metres (392.3 sq. feet)



Total area: approx. 82.6 sq. metres (889.3 sq. feet)

This plan is for illustrative purposes only. Whilst every care has been taken to ensure the accuracy of the floorplan, measurements, door/window positions and rooms are approximate and no responsibility is taken for any error/omissions
Plan produced using PlanUp.