



**Connells**

Trinity Road  
Old Wolverton MILTON KEYNES



# Trinity Road Old Wolverton MILTON KEYNES MK12 5PB

for sale offers in excess of  
**£325,000**



## Property Description

A well-presented three-bedroom semi-detached home with an attached garage and front and rear gardens, pleasantly positioned in a small cul-de-sac on this popular residential development.

The accommodation is arranged over two floors and comprises an entrance porch, entrance hall, living room and a spacious kitchen/dining room. To the first floor are three bedrooms and a family bathroom. Externally, the property benefits from a small front garden, an enclosed rear garden and an attached single garage.

The Galleon Estate is a sought-after development on the edge of Wolverton, ideally located within walking distance of countryside walks, Wolverton town centre and its railway station, leisure centre and swimming pool. Stony Stratford is also within easy reach, offering a charming selection of shops, pubs and restaurants.

The property is offered in good decorative order and early viewing is highly recommended.

## Entrance Porch

The front door opens into an entrance porch with space for storage, leading into the entrance hall which provides stairs to the first floor and access to the living room.

## Living Room

12' 1" x 10' 11" ( 3.68m x 3.33m )

The living room is positioned to the front of the property and features a fireplace with brick surround, an under-stairs storage cupboard, front-facing window and an open doorway through to the dining area.

## Kitchen / Diner

15' 7" x 8' 10" ( 4.75m x 2.69m )

The kitchen/dining room is a bright and spacious room with patio doors opening onto the rear garden, an additional rear window and a glazed door to the side. There is ample space for a dining table. The kitchen is fitted with a range of wall and base units with work surfaces, sink and space for appliances, along with a built-in storage cupboard.

## Landing

The landing has a side window, access to the loft and doors to all rooms.

## Bedroom 1

10' 10" x 9' 3" ( 3.30m x 2.82m )

Bedroom one is a double bedroom located to the front.

## Garage

15' 7" x 7' 7" ( 4.75m x 2.31m )

Attached single garage with up-and-over door and rear access door.

## Bedroom 2

Bedroom two is a rear-facing double bedroom with a built-in cupboard.

## Bedroom 3

6' 7" x 6' ( 2.01m x 1.83m )

Bedroom three is a front-facing single bedroom currently being used as dressing room.

## Family Bathroom

The bathroom is fitted with a white suite comprising a WC, wash hand basin and bath, with a rear-facing window.

## Outside

### Front

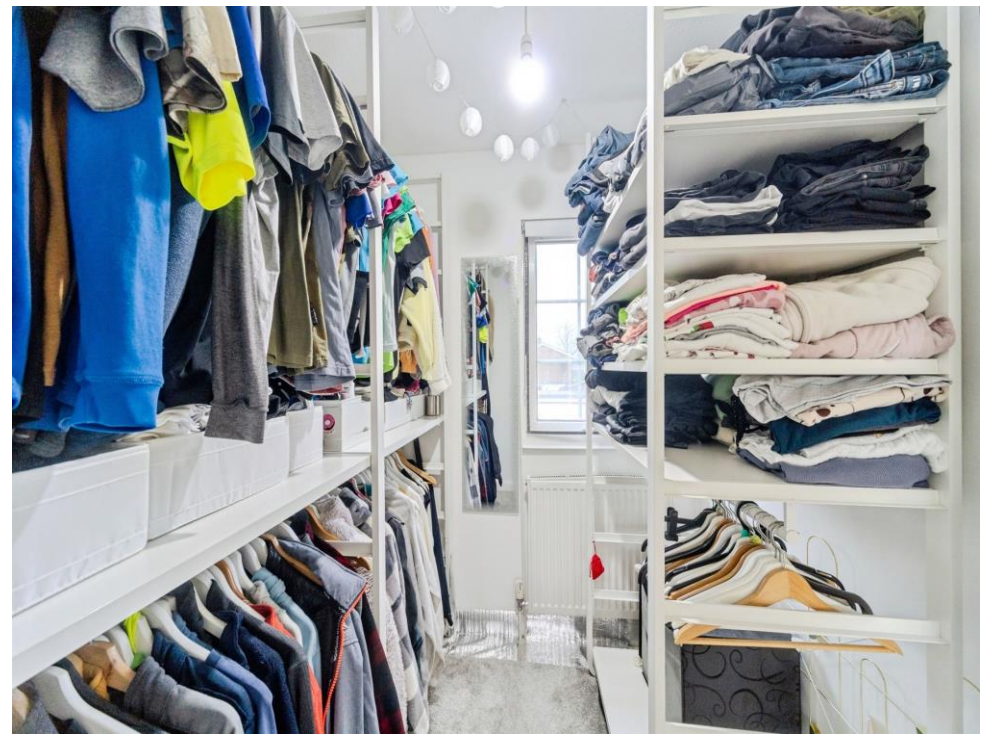
The front garden is laid to lawn with stocked flower beds. The driveway provides off street parking.

### Rear

The enclosed rear garden is mainly laid to lawn with a paved patio area and established borders, ideal for outdoor entertaining. The covered patio areas provides shelter all year round.

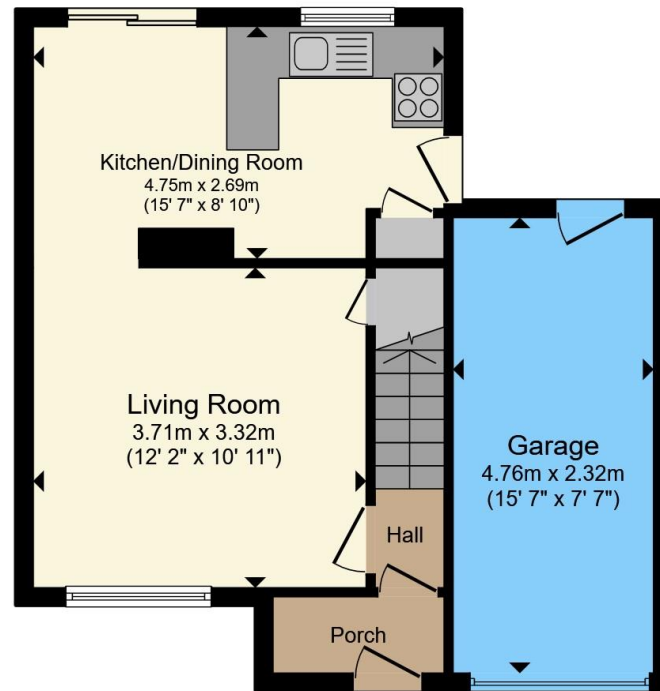




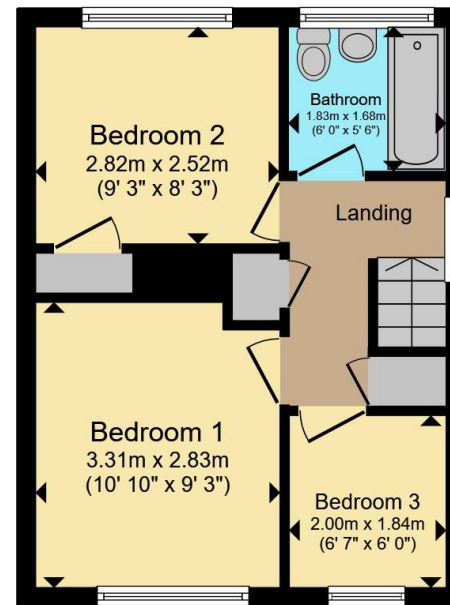








**Ground Floor**



**First Floor**

Total floor area 76.5 m<sup>2</sup> (823 sq.ft.) approx

This floor plan is for illustrative purposes only. It is not drawn to scale. Any measurements, floor areas (including any total floor area), openings and orientation are approximate. No details are guaranteed, they cannot be relied upon for any purpose and they do not form part of any agreement. No liability is taken for any error, omission or misstatement. A party must rely upon its own inspection(s). Powered by [www.propertybox.io](http://www.propertybox.io)

**Connells**

To view this property please contact Connells on

**T 01908 563 993**  
**E [stonystatford@connells.co.uk](mailto:stonystatford@connells.co.uk)**

82 High Street Stony Stratford  
MILTON KEYNES MK11 1AH

EPC Rating: D Council Tax  
Band: C

Tenure: Freehold

**view this property online [connells.co.uk/Property/SSD307624](http://connells.co.uk/Property/SSD307624)**



1. MONEY LAUNDERING REGULATIONS Intending purchasers will be asked to produce identification documentation at a later stage and we would ask for your co-operation in order that there will be no delay in agreeing the sale. 2. These particulars do not constitute part or all of an offer or contract. 3. The measurements indicated are supplied for guidance only and as such must be considered incorrect. Potential buyers are advised to recheck measurements before committing to any expense. 4. We have not tested any apparatus, equipment, fixtures, fittings or services and it is in the buyers interest to check the working condition of any appliances.

Connells Residential is registered in England and Wales under company number 1489613, Registered Office is Cumbria House, 16-20 Hockliffe Street, Leighton Buzzard, Bedfordshire, LU7 1GN. VAT Registration Number is 500 2481 05.

**See all our properties at [www.connells.co.uk](http://www.connells.co.uk) | [www.rightmove.co.uk](http://www.rightmove.co.uk) | [www.zoopla.co.uk](http://www.zoopla.co.uk)**

Property Ref: SSD307624 - 0005