



**Flat 16.06, 8 Casson Square, London, SE1 7GU**

**£3,900 Per month**

 1  1  1  B

A stylish One-Bedroom apartment to rent in the prestigious Southbank Place development, offering luxury riverside living in the heart of London's South Bank. This bright, contemporary home features an open-plan layout, floor-to-ceiling windows, and stunning views. The bespoke kitchen is fitted with premium Miele appliances and sleek concealed design features, delivering a clean, modern finish throughout. Photos have been digitally dressed for marketing purposes.

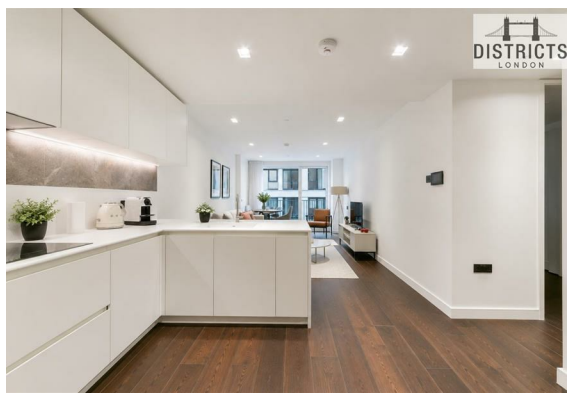
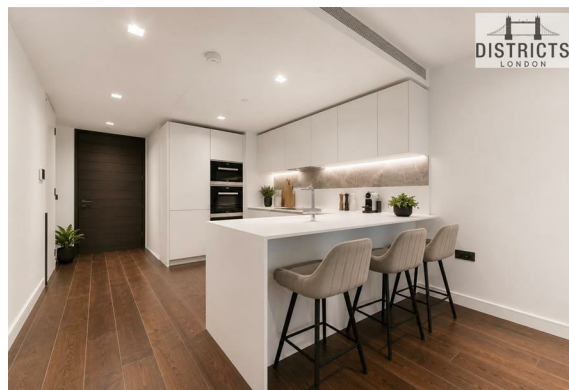
Residents enjoy exceptional on-site amenities including a 24-hour concierge, gym, swimming pool, spa, and private residents' lounge.

Moments from Waterloo Station, the property offers outstanding connectivity across London, with the West End, City, and Canary Wharf all within easy reach. Surrounded by world-class culture, dining, and riverside attractions, this is a prime opportunity to live in one of London's most desirable developments.

Council Tax Band: Lambeth, F  
Change of contract fee: £50 including VAT  
Lift access | Cladding: EWS1 Certificate  
Ask Agent  
Holding Deposit - 1 weeks rent, subject to agreed offer

Electricity supply – Mains | Heating & Hot Water – Mains | Water Supply & Sewerage – Mains | Lift Access | Cladding: EWS1 Cert. available | Parking: No

To check broadband and mobile phone coverage please visit Ofcom  
To check planning permission please visit Lambeth Council Website, Planning & Building Control

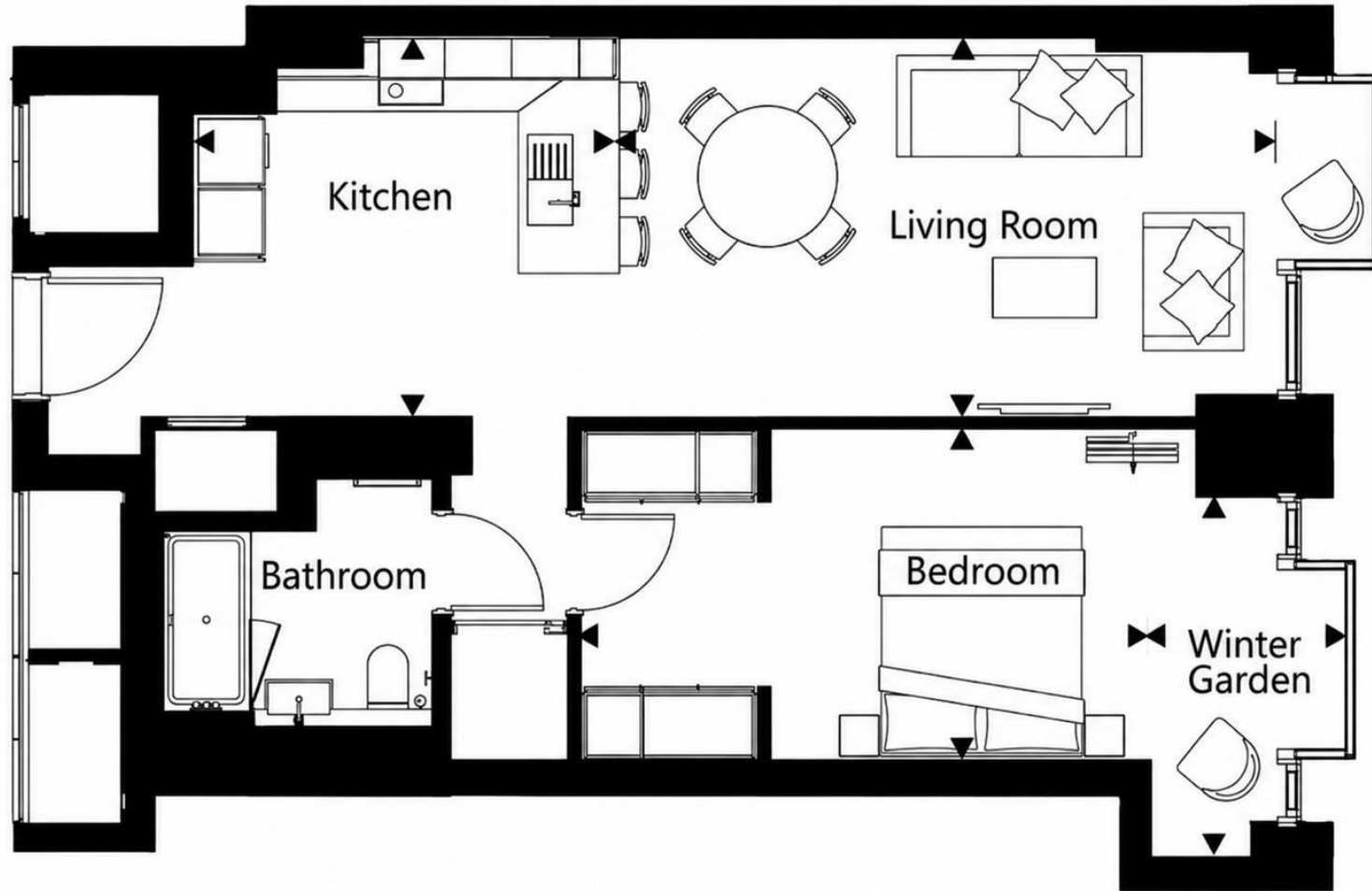




# Total Area

# 65 sqm

# 704 sqft



Energy Efficiency Rating		Current	Potential
Very energy efficient - lower running costs			
(92 plus) A			
(81-91) B		84	84
(69-80) C			
(55-68) D			
(39-54) E			
(21-38) F			
(1-20) G			
Not energy efficient - higher running costs			
England & Wales		EU Directive 2002/91/EC	

These particulars, whilst believed to be accurate are set out as a general outline only for guidance and do not constitute any part of an offer or contract. Intending purchasers should not rely on them as statements of representation of fact, but must satisfy themselves by inspection or otherwise as to their accuracy. No person in this firm's employment has the authority to make or give any representation or warranty in respect of the property.