



LORDS COURT, W6

£4,000 per month

Conveniently located for both the river and the transport hub in Hammersmith, this spacious and well finished first floor, three-bedroom apartment in a modern warehouse style development benefits from under

New build flat
Three bedrooms

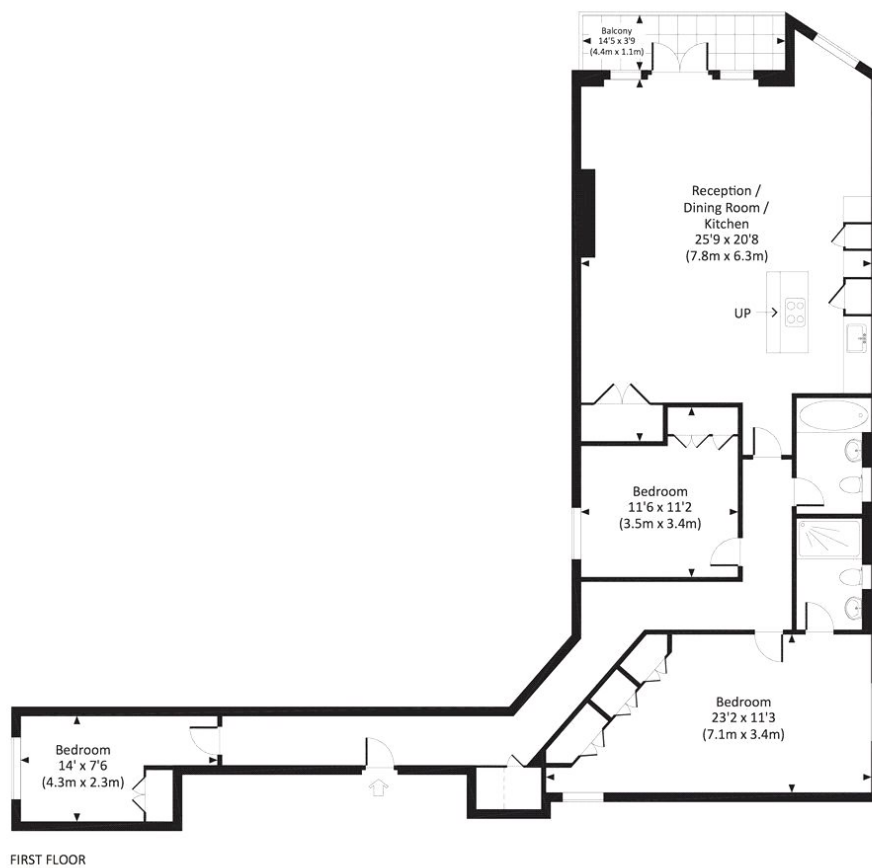
10 year new build guarantee
Hammersmith location

STEP INSIDE LORDS COURT

CHANCELLORS STREET, W6

Approx. gross internal area

1286 Sq.Ft. / 119.5 Sq.M. Inc. Restricted Height Area



All measurements have been made in accordance with RICS Code of Measuring Practice which are approximate only and only for illustrative purposes. For the avoidance of doubt, Dowling Jones Design shall not be liable for any reliance on these measurements. © 2015 www.dowlingjones.com 020 7610 9933

Bishops Park
020 7368 2480

Energy Rating: We aim to make our particulars both accurate and reliable. However, they are not guaranteed; nor do they form part of an offer or contract. If you require clarification on any points then please contact us, especially if you're traveling some distance to view. Please note that appliances and heating systems have not been tested and therefore no warranties can be given as to their good working order

**MARSH &
PARSONS**