



PEMBROKE PLACE, W8

£2,750,000

Five Bedrooms
Two Bathrooms
Private Garden
Victorian Charm
Central Kensington
Freehold

@marshandparsons
marshandparsons.co.uk

MARSH &
PARSONS

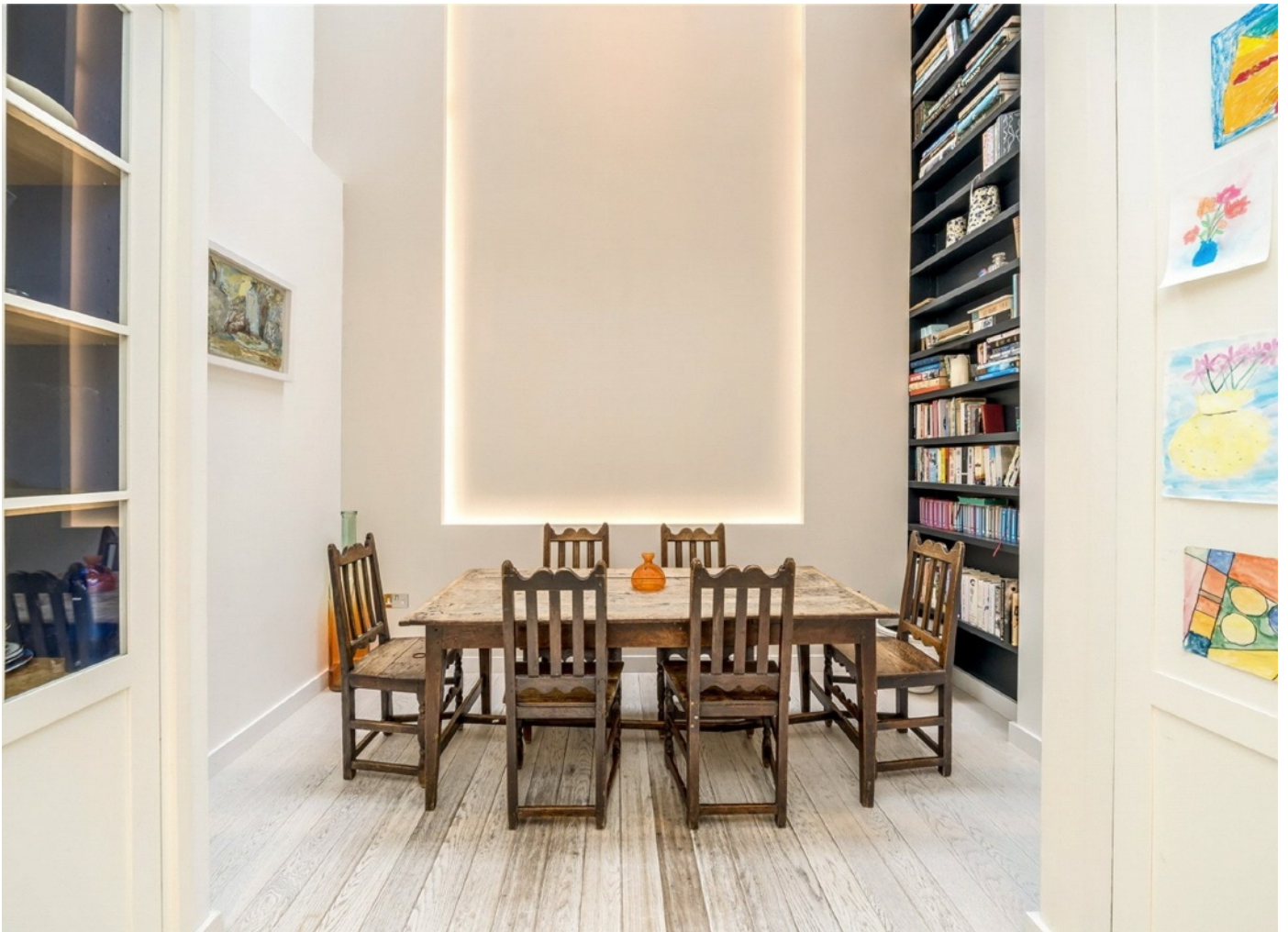
ABOUT THE PROPERTY

A stunning five-bedroom end of terrace Victorian house in a cul-de-sac in Kensington.

Pembroke Place is a quiet cul-de-sac conveniently located in the heart of Kensington. There are plenty of local amenities nearby including the shops, cafes and restaurants of Kensington High Street. There are plenty of green spaces with Hyde Park and Holland Park being in close proximity. There are excellent transport links with High Street Kensington Underground Station for District and Circle line services.

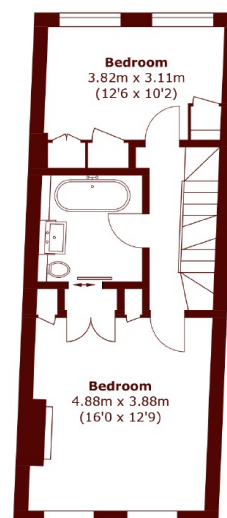
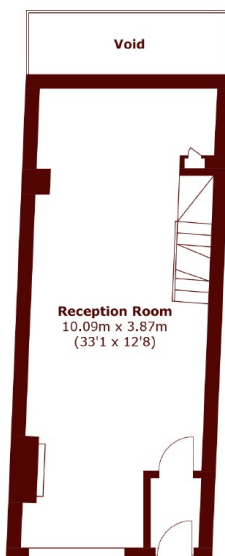
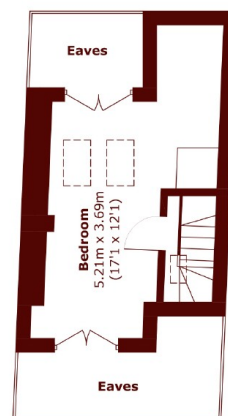
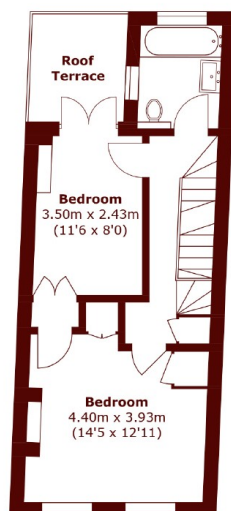








STEP INSIDE PEMBROKE PLACE



Total area (approx.): 186.3 sq. m (2,005.4 sq. ft)

(Excluding Void / Eaves)

Roof Terrace (approx.): 5.0 sq. m (53.8 sq. ft)

Kensington
020 7368 4450

Energy Rating: C We aim to make our particulars both accurate and reliable. However, they are not guaranteed; nor do they form part of an offer or contract. If you require clarification on any points then please contact us, especially if you're traveling some distance to view. Please note that appliances and heating systems have not been tested and therefore no warranties can be given as to their good working order

**MARSH &
PARSONS**