



WESTBOURNE PARK ROAD, W11

£800,000

Stunning condition
Private entrance
Southerly garden
Superb location
Moments from Portobello Road
EPC- C

@marshandparsons
marshandparsons.co.uk

MARSH &
PARSONS

ABOUT THE PROPERTY

A stunning two bedroom garden apartment in the heart of Notting Hill.

The property is ideally positioned on Westbourne Park Road between Portobello Road and Ledbury Road with a wealth of local amenities on the doorstep including the wonderful selection of fashionable cafés, restaurants and boutique shops of Westbourne Grove, Ledbury Road and Kensington Park Road not to mention the world renowned Portobello Market itself.







FURTHER DETAILS

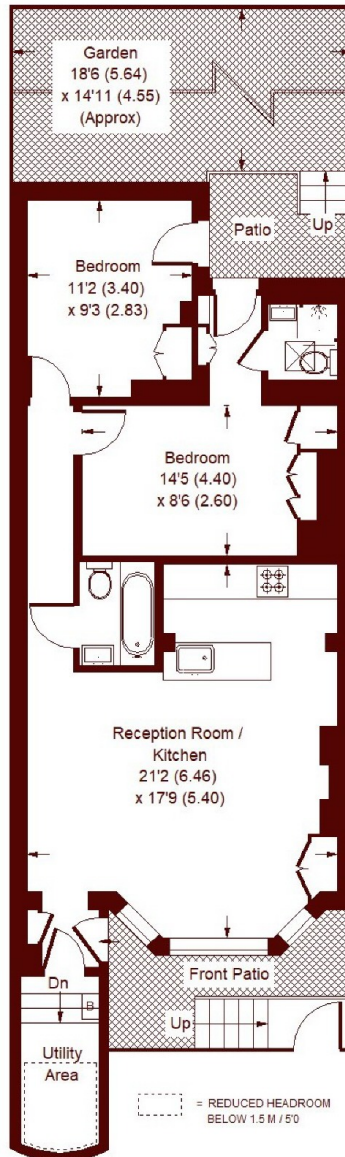
Positioned within a beautifully maintained period building and benefiting from its own private entrance, this lovely apartment is presented in excellent decorative order throughout. The accommodation features an open plan reception room with excellent dining space, attractive bay windows, a contemporary designed fully integrated kitchen with breakfast counter, two double bedrooms both of which provide access to the garden, and two bathrooms. This superb apartment further benefits from a rear patio which leads onto a larger private south facing patio garden, excellent storage space throughout and a utility area.



STEP INSIDE WESTBOURNE PARK ROAD

Westbourne Park Road, W2

APPROX. GROSS INTERNAL FLOOR AREA
730 SQFT / 67.8 SQM



LOWER GROUND FLOOR

Whilst every attempt has been made to ensure the accuracy of the floor plan, measurements are approximate and not to scale. No guarantee is given on the total square footage of the property outlined on the plan. Figures given are for guidance. Plan is for illustration purposes only, not to be used for valuations.

Notting Hill
020 7313 2890

Energy Rating: C We aim to make our particulars both accurate and reliable. However, they are not guaranteed; nor do they form part of an offer or contract. If you require clarification on any points then please contact us, especially if you're traveling some distance to view. Please note that appliances and heating systems have not been tested and therefore no warranties can be given as to their good working order

MARSH &
PARSONS