



Weymouth Street, W1G

£650,000

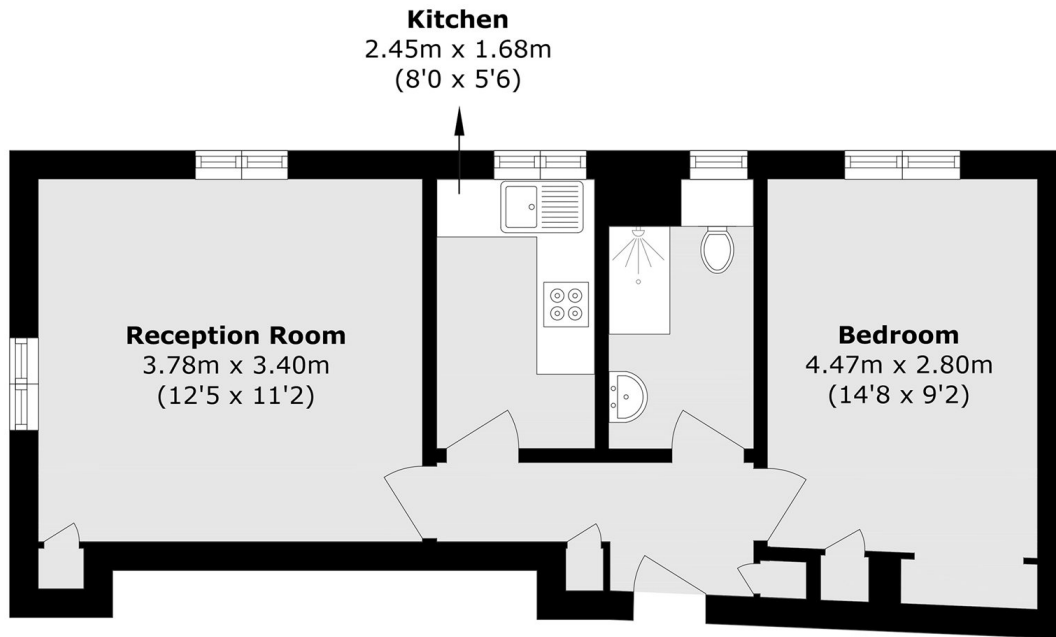
A bright one bedroom flat occupying a corner aspect of this attractive residential block. Refurbished interior and a long lease. Overlooks a quiet tree lined street moments from Marylebone High Street.

Accessible to the amenities of the area. The nearest station is Bond Street.

Features

- One Double Bedroom
- Dual Aspect Reception
- Modern Kitchen
- Day Porter On Site
- Marylebone Village Location

Weymouth Street, London, W1G



Raised Ground Floor

Total area (approx.): 42.2 sq. m (454.2 sq. ft)