



Jordan fishwick

Attercliffe Road
Manchester



Attercliffe Road Manchester M21 9FS

£1,651 Per Calendar Month



The Property

**** AVAILABLE AUGUST **** We are delighted to offer this charming extended period mid terrace property situated on a quiet Cul-de-sac just a stones throw from Chorlton Green & Beech Road. This delightful property has been tastefully modernised throughout and provides spacious and light accommodation, ideal for a professional couple or small family . Just a short walk to all local amenities, Chorlton Meadows and the vibrant scene of Beech Road, this wonderful property is not one to be missed. The property briefly comprises: large lounge with log burning stove, dining room opening to the extended modern kitchen, fitted with integrated appliances and French doors to the rear courtyard garden. The first floor provides two spacious bedrooms and a shower room benefitting from a large remote controlled Velux window. Externally there is a walled garden to the front whilst to the rear a West facing Courtyard garden with access to the secure gated rear alleyway.

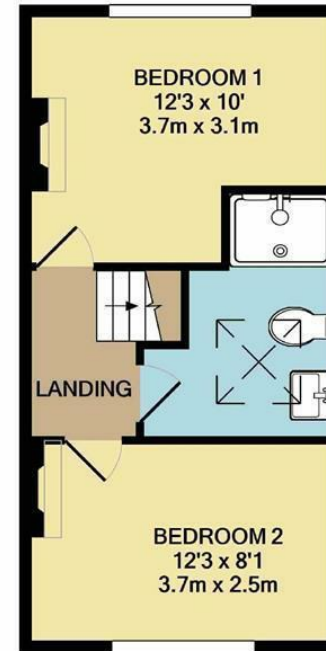
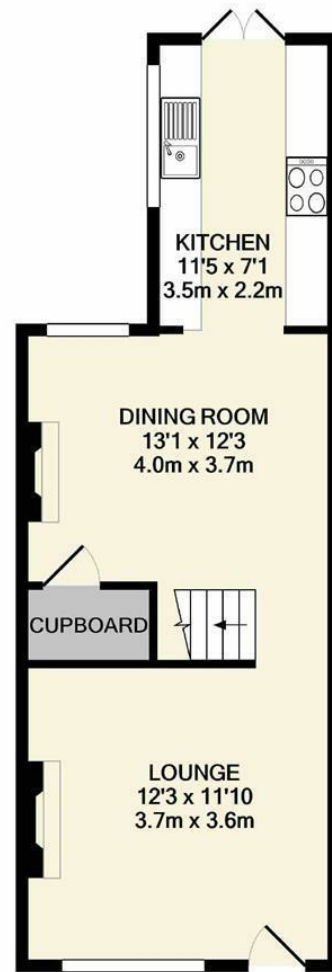
***** To arrange a viewing please call 0161 860 4444 *****

Directions

- Council Tax Band B - EPC D
- Beautifully presented & extended mid terraced property
- Two double bedrooms
- Two reception rooms
- Fitted shower room
- Cul-de-sac location
- Available August

Postcode - M21 9FS
EPC Rating - D
Floor Area - sq ft
Local Authority - Manchester
Council Tax - B





GROUND FLOOR
APPROX. FLOOR
AREA 386 SQ.FT.
(35.9 SQ.M.)

1ST FLOOR
APPROX. FLOOR
AREA 306 SQ.FT.
(28.4 SQ.M.)

TOTAL APPROX. FLOOR AREA 692 SQ.FT. (64.3 SQ.M.)

Measurements are approximate. Not to scale. Illustrative purposes only
Made with Metropix ©2021



These particulars are believed to be accurate but they are not guaranteed and do not form a contract. Neither Jordan Fishwick nor the vendor or lessor accept any responsibility in respect of these particulars, which are not intended to be statements or representations of fact and any intending purchaser or lessee must satisfy himself by inspection or otherwise as to the correctness of each of the statements contained in these particulars. Any floorplans on this brochure are for illustrative purposes only and are not necessarily to scale.

Offices at: Offices at Chorlton, Didsbury, Disley, Hale, Glossop, Macclesfield, Manchester Deansgate, Manchester Whitworth Street, New Mills, Sale, Wilmslow and Withington

410-412 Barlow Moor Road, Chorlton, Manchester, M21

01618604444^{8AD}

chorlton@jordanfishwick.co.uk
www.jordanfishwick.co.uk