



Garrett Mansions, Edgware Road,
, W2

£1,145 Per Week,

NAPIER WATT

T: 0207 935 0011
E: enquiries@napierwatt.co.uk
W: napierwatt.co.uk

35 Berkeley Square, Mayfair, London, W1J 5BF







Description

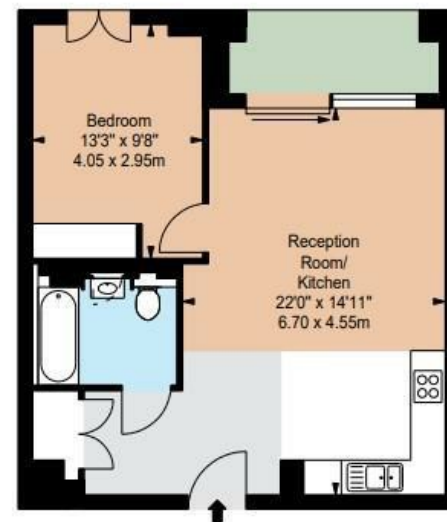
A luxurious interior designed one-bedroom 2nd floor apartment set over 559 SqFt comprising a large open-plan reception room leading onto a private balcony. The fully integrated kitchen with appliances from Siemens and Miele including oven and induction hobs, large fridge freezer and dishwasher and wine chiller all inset into a composite stone work tops. The apartment has two double bedrooms and two bathrooms. The whole apartment also benefits from comfort cooling. This apartment comes complete with large Samsung Smart TVs and Samsung sound bar and is offered with full use of the onsite facilities including Gym, pool, residence lounge area, private dining room, conference facilities, 24 hour concierge and Cinema room. The apartment is ready to move into with internet already connected.

Key Features

- BALCONY
- GYMNASIUM
- AVAILABLE NOW
- SWIMMING POOL
- 24 HOUR CONCIERGE
- AIR CONDITIONING
- 1ST FLOOR WITH LIFT

Terms

Fees & Charges: Tenancies exceeding £100,000 Per annum £480 inc VAT, Tenancies where a company is a tenant £480 Inc VAT.



SECOND FLOOR

IMPORTANT: We would inform prospective purchasers that these sales particulars have been prepared as a general guide only. A detailed survey has not been carried out, nor the services, appliances and fittings tested. Room sizes should not be relied upon for furnishing purposes and are approximate. If floor plans are included, they are for guidance only and illustration purposes only and may not be to scale. If there are any important matters likely to affect your decision to buy, please contact us before viewing the property.