



Lynwood, Folkestone, Kent

Folkestone

MATCH  
ESTATES

£280,000



**Bedrooms: 2 | Bathrooms: 1 | Receptions: 1**

Set in the quiet, residential loop of Lynwood, this two-bedroom bungalow offers a fantastic opportunity for anyone looking for single-level living without compromising on space or convenience. Whether you are downsizing or looking for a solid first home, this mid-terrace property ticks all the practical boxes while offering a genuinely comfortable lifestyle.

The heart of the home is the living space, which flows naturally into a bright conservatory at the rear. It's the perfect spot for a morning coffee or reading the paper, acting as an extra reception room that connects you to the garden year-round. Speaking of the garden, it has been designed for ease—a low-maintenance private space that lets you enjoy the summer months without spending your whole weekend mowing the lawn.

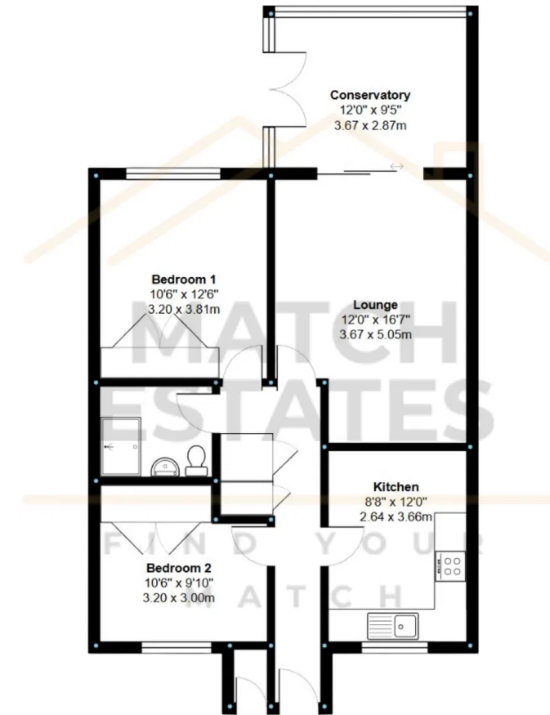
Both bedrooms are well-proportioned, and the layout feels logical and airy. Practicality is a huge plus here: you have your own garage en-bloc for storage or the car, plus residents' parking outside.

Location-wise, you are in a sweet spot. You're close enough to Folkestone's supermarkets and Broadmead Village for the weekly shop, but tucked away enough to enjoy the quiet. With the high-speed link at Folkestone West just a short distance away, and reliable bus routes on your doorstep, getting around is effortless.

Offered chain free, this is a straightforward, stress-free purchase waiting for its new owners.







Measurements are approximate and for display purposes only

Energy Efficiency Rating		
	Current	Potential
<i>Very energy efficient - lower running costs</i>		
(92 plus) <b>A</b>		
(81-91) <b>B</b>		
(69-80) <b>C</b>	72	80
(55-68) <b>D</b>		
(39-54) <b>E</b>		
(21-38) <b>F</b>		
(1-20) <b>G</b>		
<i>Not energy efficient - higher running costs</i>		
<b>England &amp; Wales</b>	EU Directive 2002/91/EC	

## Match Estates

B3 Bouverie House 16 Bouverie Place Folkestone CT20 1AE

01303 475 085

folkestone@match-estates.co.uk

<https://www.match-estates.co.uk/>