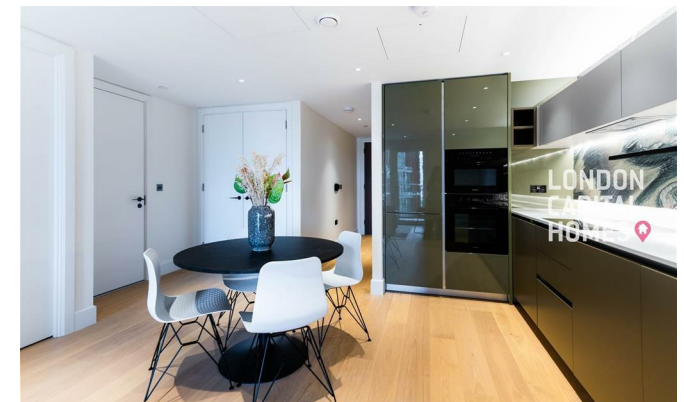


**LONDON  
VICTORIA  
GROUPS** 



## **Cascade Way** , LONDON W12 7SR

- White City/Wood Lane Station
- 24-hour concierge and security
  - Fully equipped gym
- Landscaped communal gardens
  - EPC-E
- Residents' lounge
- Indoor swimming pool and luxury spa
- Private cinema (with Blu-ray and PS4 Pro)
- EPC-B

**£3,200 PCM**

Local Authority **Hammersmith  
And Fulham**  
Council Tax Band **E**  
EPC Rating **B**

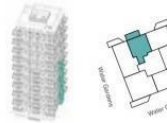
ONE BEDROOM  
TYPE 02



Levels 01 - 10

Photo: L.01.06, L.02.06, L.03.06, L.04.06, L.05.06, L.06.06,  
L.07.06, L.08.06, L.09.06, L.10.06

Internal area	54.9 m <sup>2</sup>	591 sq ft
External area	7.2 m <sup>2</sup>	77 sq ft
Kitchen/Living/Dining	4.28 x 6.50 m	14ft 0" x 21ft 4"
Bedroom	2.80 x 4.40 m	9ft 2" x 14ft 5"
Balcony	1.64 x 4.87 m	5ft 5" x 16ft 0"



C Coat Cupboard U Utility Cupboard W Wardrobe W/D Washer Dryer S Shelving WM Washing Machine Distance Indicator TD Tumble Dryer  
Floorplans shown for White City Living are for approximate measurements only. Exact layout and sizes may vary. All measurements may vary within a tolerance of 3%. To increase legibility it has been decided to list the page dimensions and page size for all different scales to allow within the brochure. The dimensions are not intended to be used for carpet, tiling, appliance sizes or items. Kitchen appliance/cabinet positions indicated are for guidance only. External cladding and window/mulion locations and sills are indicative and subject to change. Facade projections/depths locations/balancing dimensions may be subject to change.



**London Office Office**  
Spaces Victoria, 25 Wilton Road, Pimlico,  
London, SW1V 1LW

**Contact**  
020 3084 3094  
XL@londonvictoriagroups.co.uk  
www.londonvictoriagroups.co.uk

Agents Note: Whilst every care has been taken to prepare these particulars, they are for guidance purposes only. All measurements are approximate and for general guidance purposes only and whilst every care has been taken to ensure accuracy, they should not be relied upon and potential buyers/tenants are advised to recheck the measurements.