



62 Oulton Court, Grappenhall, Grappenhall, WA4 2NT

£85,000

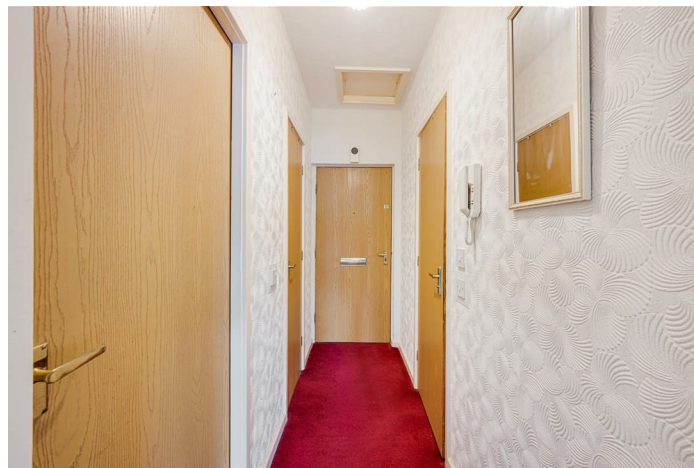


62 Oulton Court, Grappenhall, Grappenhall, WA4 2NT

£85,000

We have a lovely first floor retirement apartment in this very popular development which has the benefit of secure parking, warden system, reception areas and laundry rooms. The apartment itself consists of a hallway, cupboard, spacious lounge with feature fireplace, upgraded kitchen, double bedroom with fitted wardrobe and adapted bathroom with walk in shower. The gardens are beautifully kept and offer seating areas. The development is in a very convenient location close to bus stops, local shops and amenities.

Description

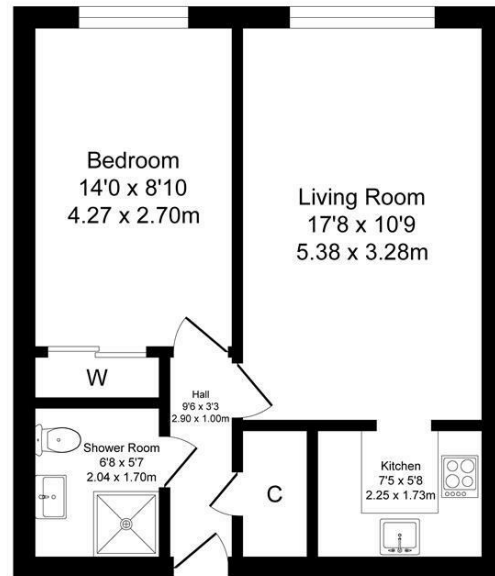


Council Tax Band: B

Floor Plans

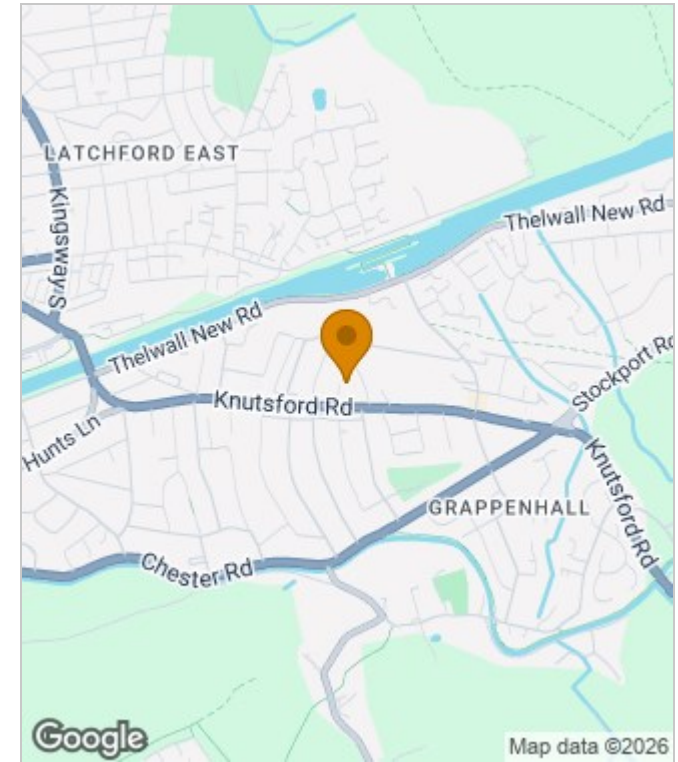
Oulton Court, Grappenhall, Warrington Total Approx. Floor Area 479 Sq.ft. (44.5 Sq.M.)

Surveyed and drawn by Lens Media for illustrative purposes only. Not to scale. Whilst every attempt was made to ensure the accuracy of the floor plan, all measurements are approximate and no responsibility is taken for any error.

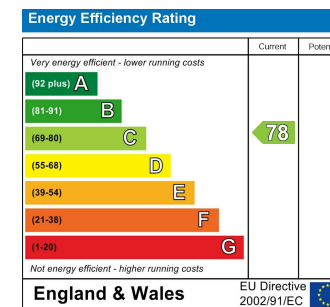


Approx. Floor Area 479 Sq.Ft (44.5 Sq.M.)

Area Map



Energy Performance Graph



These particulars, whilst believed to be accurate are set out as a general outline only for guidance and do not constitute any part of an offer or contract. Intending purchasers should not rely on them as statements of representation of fact, but must satisfy themselves by inspection or otherwise as to their accuracy. No person in this firm's employment has the authority to make or give any representation or warranty in respect of the property.