

The Corner, Oaklands Drive, Saltash, PL12

Guide Price £360,000

4 2 1



A beautifully presented four-bedroom detached family home occupying an elevated position and enjoying far-reaching countryside views. Offering approximately 1,326 sq ft of accommodation arranged over three floors, this attractive property provides practical and well-balanced family living space, together with a private driveway, a south-facing garden, and a stylish contemporary finish throughout.

Saltash is a popular Cornish Town located across the River Tamar from Plymouth and is often known as The Gateway To Cornwall. The Town Centre provides a range of facilities, including a doctors, leisure centre, supermarkets, churches, primary schools and a secondary school.

Key Features

- TO ARRANGE A VIEWING PLEASE QUOTE BL0650
- Four Bedrooms (1 Ensuite)
- 1,326 sq ft Of Accommodation
- Spacious & Versatile Accomodation
- Low-Maintenance South-West Facing Garden
- Detached
- Off-Road Parking
- Beautifully Presented
- Countryside Views
- Freehold

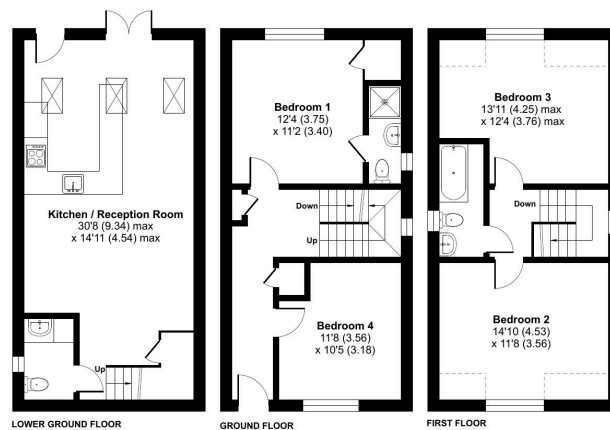
The Corner, Oaklands Drive, Saltash, PL12

Approximate Area = 1284 sq ft / 119.2 sq m
 Limited Use Area(s) = 42 sq ft / 3.9 sq m
 Total = 1326 sq ft / 123.1 sq m

For identification only - Not to scale



Denotes restricted head height



Floor plan produced in accordance with RICS Property Measurement Standards incorporating International Property Measurement Standards (IPMS Residential). © nichecom 2026. Produced for eXp Agent (DD). REF: 1473644