



Birkenhead Street, WC1H

£435,000

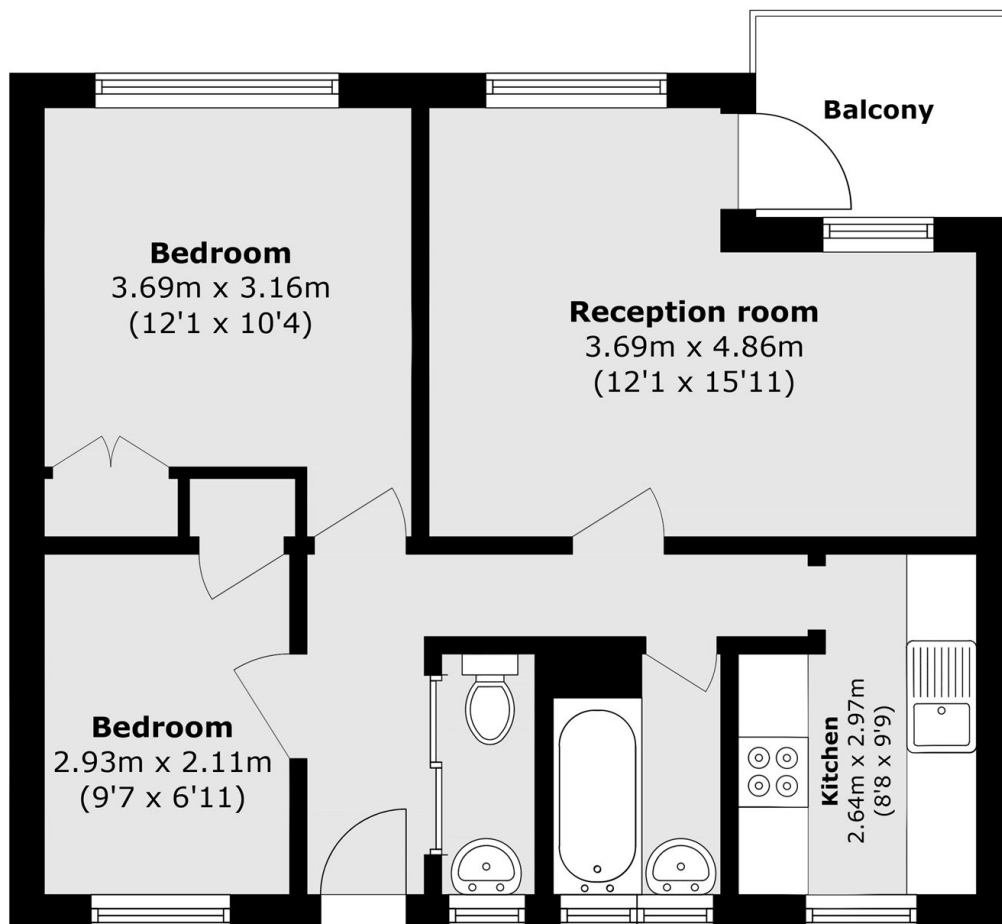
A well-appointed two-bedroom home located in a purpose-built block with lift access, a private balcony a separate kitchen and no onward chain.

Riverfleet is located on Birkenhead Street which is opposite King's Cross St Pancras including all the conveniences at the newly developed Coal Drops Yard.

Features

- Two Bedrooms
- Separate Kitchen
- Living Room
- Private Balcony
- Lift Access
- No Onward Chain

Birkenhead Street, London, WC1H



Total area (approx.): 51.5 sq. m (554.3 sq. ft)

Balcony area (approx.): 3.9 sq. m (41.9 sq. ft)