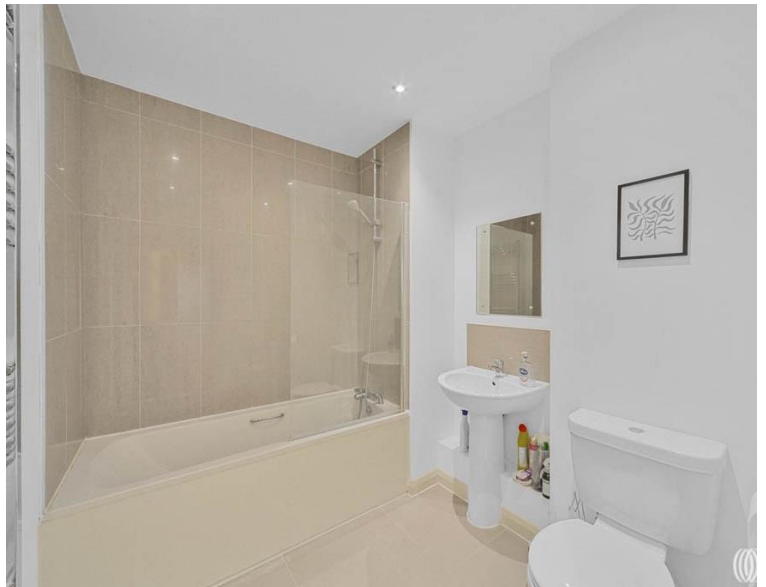
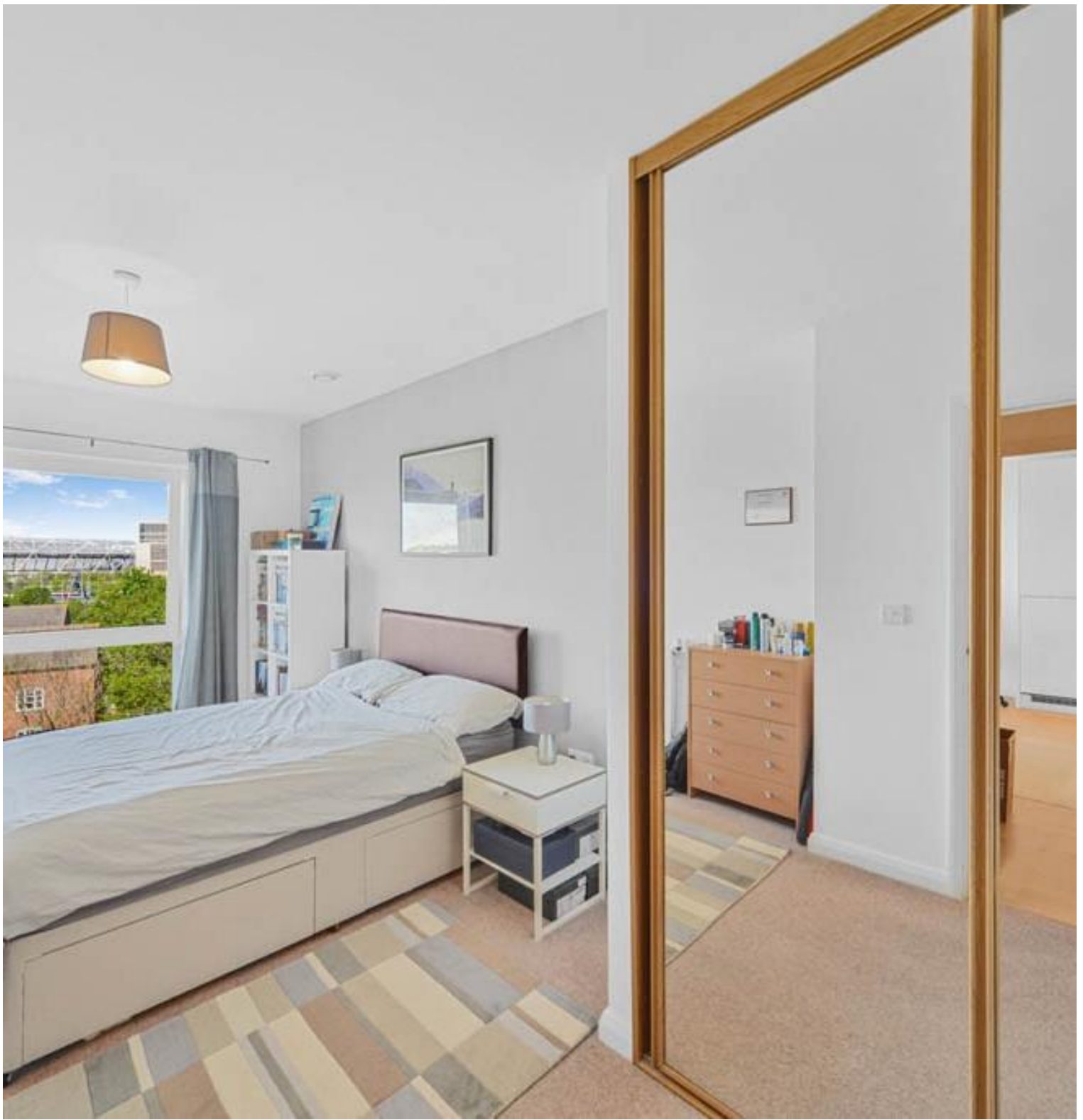


High Street, London E15

Guide price £325,000 Leasehold







Description

Perfectly positioned within the desirable River Heights development, this immaculate one-bedroom apartment offers a superior standard of modern living with stunning, direct views over the Waterworks river. The home's elevated position ensures it is filled with natural light, creating a bright and welcoming atmosphere throughout.

The heart of the home is the expansive open-plan reception room, which provides a versatile space for relaxing and entertaining. It features a contemporary, fully integrated kitchen and flows seamlessly onto a private balcony, offering a peaceful retreat with panoramic views across Stratford City and overlooking the Waterworks river. The apartment also includes a spacious double bedroom with generous built-in storage and a pristine, modern tiled bathroom suite.

Residents of River Heights benefit from exclusive access to premium amenities, including a 24-hour concierge service, a private gym, and a spectacular communal roof terrace that boasts incredible views of the London skyline.

Located in the dynamic hub of Stratford, the property is moments away from the world-class shopping and dining experiences at Westfield Stratford City and the green open spaces of the Queen Elizabeth Olympic Park. Unrivalled transport links are available from nearby Stratford and Stratford High Street stations, providing swift connections across the capital and beyond. This is an exceptional opportunity to acquire a prime residence offering a superb London lifestyle.

Tenure: Leasehold

Years remaining on lease: 114

Service charge: 4,567pa

Ground rent: £350pa

Council tax band: C

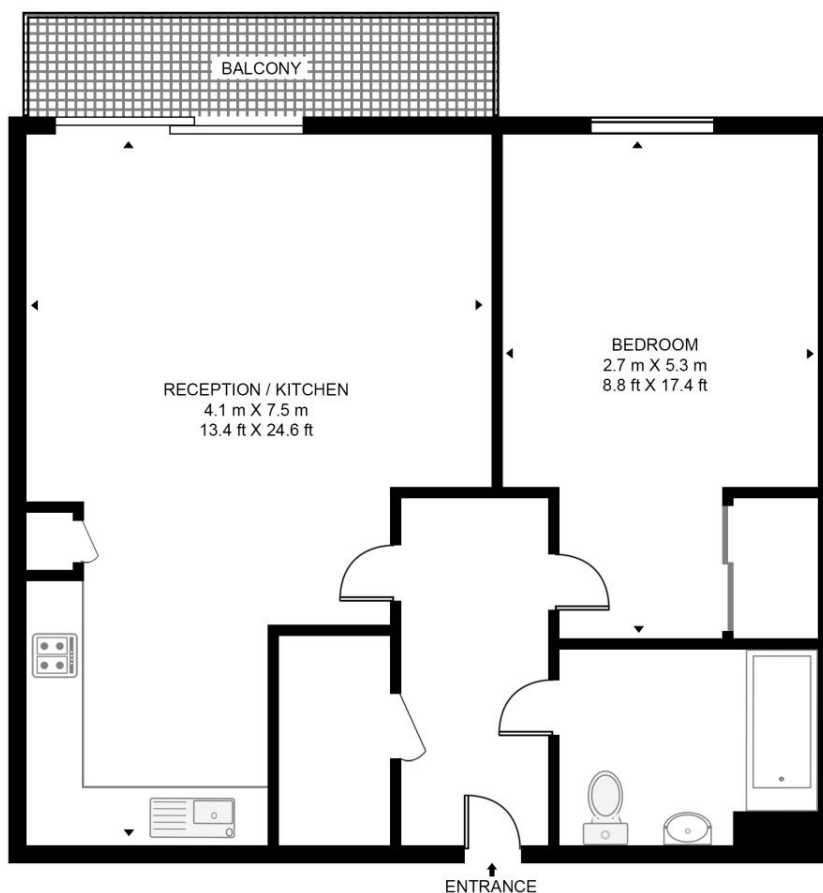
To check broadband and mobile phone coverage please visit Ofcom here [ofcom here ofcom.org.uk/phones-telecoms-and-internet/advice-for-consumers/advice/ofcom-checker](https://www.ofcom.gov.uk/phones-telecoms-and-internet/advice-for-consumers/advice/ofcom-checker).

- Direct river views
- Private balcony
- Residents' gym access
- 24-hour concierge
- Communal roof terrace
- Modern integrated kitchen
- Excellent built-in storage
- Panoramic Stratford views
- Immaculate modern finish
- Prime Stratford location

Floorplan

574 sq ft | 53 sq m

RIVER HEIGHTS, HIGH STREET
APPROXIMATE GROSS INTERNAL FLOOR AREA 574 SQ.FT (53.3 SQ.M)



FIFTH FLOOR



HDVA

This floor plan has been defined by the RICS Code of Measurement. This floor plan and all others are for approximate representative purposes only and upon usage is agreed to as such by the client.

WWW: hdvirtualart.com | TEL: 0203.974.1567 | EMAIL: info@hdvirtualart.com

Stratford
5 Station Street,
London E15 1DA
+4420 3147 1500
Lettingsstratford@eu.jll.com

Urban living, your way.

jll.co.uk/residential

© 2019 Jones Lang LaSalle IP, Inc. All rights reserved. All information contained herein is from sources deemed reliable; however, no representation or warranty is made to the accuracy thereof.

