



## Apt 16, Southwood Court Southend Road, Billericay - CM11 2RA

£180,000 Leasehold

Council Tax band: D ~ EPC Energy Efficiency Rating: B

Exclusively designed for the over 55's if you are a couple or 60 for individuals this secure on the first floor with convenient lift access.

Light and spacious living with a desirable south facing aspect. Equipped with a modern fitted kitchen with integrated appliances, generously sized lounge / diner and bedroom. Residents benefit from a welcoming home-from-home communal lounge, laundry room and guest suite, ideal for visiting relatives or friends.



**tyler estates**

01277 626181

[www.tylerestates.co.uk](http://www.tylerestates.co.uk)



**Entrance Hall**

**Lounge / Diner**

23' 0" x 10' 9" (7.01m x 3.28m)

**Kitchen**

8' 6" x 7' 7" (2.60m x 2.32m)

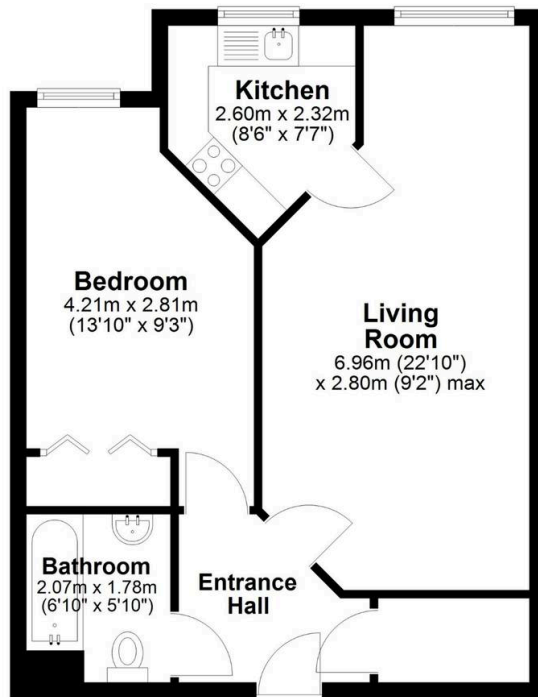
**Bedroom**

13' 8" x 9' 2" (4.17m x 2.79m)

**Bathroom**



**First Floor**



**tyler estates**



**APPROX INTERNAL FLOOR AREA**  
49 SQ M (520 SQ FT)  
This floorplan is for illustrative purposes  
only and is **NOT TO SCALE**  
All measurements are approximate  
**NOT** to be used for valuation purposes  
Copyright Tyler Estates 2026