

## 20 Dawber Close, Gaywood, King's Lynn PE30 4QW

£59,995

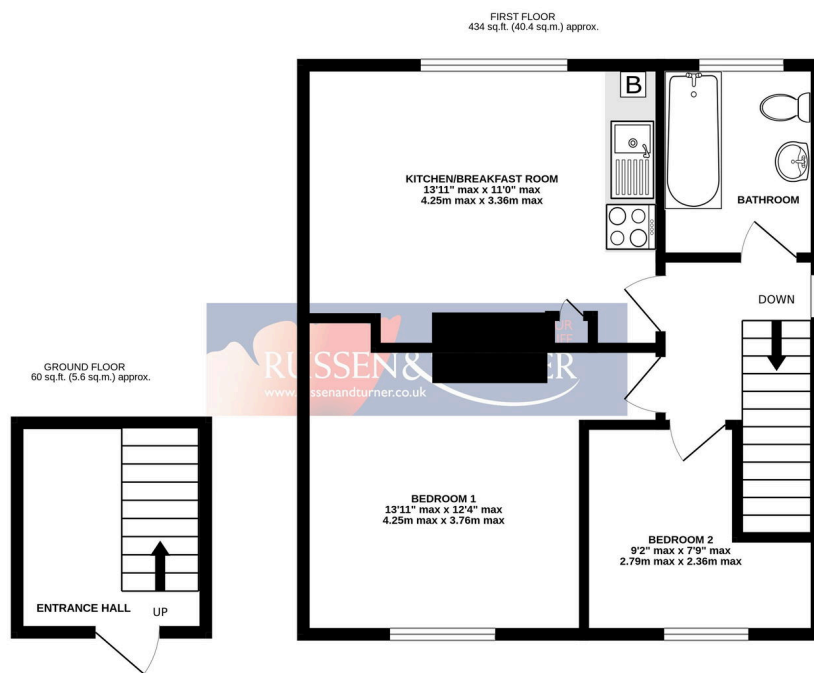
 2  1  1



**Offered with No Onward Chain** - A great first step onto the property ladder, this two-bedroom first floor flat is set in the popular area of Gaywood, King's Lynn. Featuring a private entrance, open-plan living/kitchen/dining space, a comfortable double bedroom, a versatile single room and bathroom. In need of some modernisation, it offers fantastic potential to personalise, with local amenities close by.

## Key Features

- First Floor Flat
- Leasehold
- Potential Investment Opportunity
- Gas Central Heating
- Ideal Location - Close to Local Schools & Shops
- 2 Bedrooms
- Ideal First Time Home
- No Onward Chain
- Council Tax Band A
- Double Glazed



TOTAL FLOOR AREA: 495 sq.ft. (46.0 sq.m.) approx.

Whilst every attempt has been made to ensure the accuracy of the floorplan contained here, measurements of doors, windows, rooms and any other items are approximate and no responsibility is taken for any error, omission or mis-statement. This plan is for illustrative purposes only and should be used as such by any prospective purchaser. The services, systems and appliances shown have not been tested and no guarantee as to their operability or efficiency can be given.

Made with Metropix 62026